



COMPLETE SOLUTIONS FOR ON-DEMAND CD and DVD PRODUCTION

DiscPilot Networking Software

User guide

DiscPilot

Document Reference No. (Ver 1.01)

Production Standard

VERITY SYSTEMS LTD

2 Eastern Road
Aldershot
Hampshire
GU12 4TD
United Kingdom

Tel: +44 (0) 1252 317000
Fax: +44 (0) 1252 316555
Email: sales@veritysystems.com

VERITY SYSTEMS, INC.

5441 Merchant Circle, Unit A
Placerville
California
95667
United States

Tel: (530) 626-9363
Fax: (530) 626-9395
Email: ussales@veritysystems.com

www.veritysystems.com



COPYRIGHT

This document is the property of Verity Systems and it may not be reproduced, copied or exhibited to a third party without the written permission of Verity Systems.

Verity Systems reserves the right to amend or modify the specifications and design criteria applying to these products.

SOFTWARE WARRANTY (LIMITED)

If you discover physical defects in the media on which the software is distributed or in the User's Manual, *Verity Systems* will replace the media or manual for a period of ninety (90) days after the purchase by the retail customer. You must return the disk or manual to *Verity Systems* or an authorized *Verity Systems* dealer within the warranty period accompanied by proof of purchase.

VERITY SYSTEMS DISCLAIMS ALL IMPLIED WARRANTIES ON THE PRODUCT, INCLUDING WITHOUT LIMITATION WARRANTIES OF MERCHANTABILITY, PERFORMANCE AND FITNESS FOR A PARTICULAR PURPOSE. *Verity Systems* WILL NOT BE LIABLE FOR ANY BUG, ERROR, OMISSION, DEFECT, DEFICIENCY, OR NONCONFORMITY IN ANY SOFTWARE. AS A RESULT, THE SOFTWARE IS SOLD "AS IS", AND THE PURCHASER ASSUMES THE ENTIRE RISK AS TO ITS QUALITY AND PERFORMANCE.

VERITY SYSTEMS SHALL IN NO EVENT BE LIABLE FOR DIRECT, INDIRECT, SPECIAL, INCIDENTAL, CONTINGENT OR CONSEQUENTIAL DAMAGES RESULTING FROM ANY DEFECT IN THE SOFTWARE OR ITS DOCUMENTATION INCLUDING DAMAGES FROM LOSS OF DATA, EVEN IF VERITY SYSTEMS OR AN AUTHORIZED VERITY SYSTEMS DEALER HAS BEEN ADVISED OF THE POSSIBILITY OF SUCH DAMAGES. YOU AGREE THAT VERITY SYSTEMS' LIABILITY, ARISING OUT OF CONTRACT, NEGLIGENCE, STRICT LIABILITY IN TORT OR WARRANTY SHALL NOT EXCEED ANY AMOUNTS PAID BY YOU FOR THIS PRODUCT.

Any written or oral information or advice given by Verity Systems dealers, distributors, agents or employees will in no way increase the scope of this warranty. Nor may you rely on such oral or written communication. Some states do not allow the exclusion or limitation of implied warranties or liability for incidental or consequential damages, so the above limitation or exclusion may not apply to you. This warranty gives you specific legal rights, and you may also have other rights that vary from state to state.

Software License Agreement

This is a legal agreement between you and Verity Systems Ltd. ("verity Systems"), covering your use of DiscPilot (the "software"). Be sure to read the following agreement before using the software. BY USING THE SOFTWARE (REGARDLESS IF YOU HAVE REGISTERED THE SOFTWARE OR NOT), YOU ARE AGREEING TO BE BOUND BY THE TERMS OF THIS AGREEMENT. IF YOU DO NOT AGREE TO THE TERMS OF THIS AGREEMENT, DO NOT USE THE SOFTWARE AND DESTROY ALL COPIES IN YOUR POSSESSION.

The software is owned by Verity Systems and is protected by United States copyright laws and international treaty provisions. Therefore, you must treat the software like any other copyrighted material (e.g., a book or a musical recording). Paying the license fee allows you the right to use one copy of the software on a single computer.

You may not use this software to copy copyrighted material without the permission of the copyright owner. You may not rent or lease the software, nor may you modify, adapt, translate, reverse engineer, decompile, or disassemble the software. If you violate any part of this agreement, your right to use this software terminates automatically and you must then destroy all copies of the software in your possession.

The software and its related documentation are provided "As IS" and without warranty of any kind and Verity Systems expressly disclaims all other warranties, expressed or implied, including, but not limited to, the purpose. Under no circumstances shall Verity Systems be liable for any incidental, special, or consequential damages that result from the use or inability to use the

software or related documentation, even if Verity Systems has been advised of the possibility of such damages. In no event shall Verity Systems liability exceed the license fee paid, if any.

All written or oral information or advice given by Verity Systems dealers, distributors, agents or employees will in no way increase the scope of this license or warranty. Nor may you rely on such oral or written communication. Some states do not allow the exclusion or limitation of implied warranties or liability for incidental or consequential damages, so the above limitation or exclusion may not apply to you. This warranty gives you specific legal rights, and you may also have other rights which vary from state to state.

This agreement shall be governed by the laws of the State of California. If for any reason a court of competent jurisdiction finds any provision of the agreement, or portion thereof, to be unenforceable, that provision of the agreement shall be enforced to the maximum extent permissible so as to affect the intent of the parties, and the remainder of this agreement shall continue in full force and effect.

TABLE OF CONTENTS

Section 1	Introduction.....	6
Section 2	System Requirements.....	7
	2.1 System Requirements DiscPilot.....	7
	2.2 System Requirements PublisherNET.....	7
	2.3 Other Systems Requirement Considerations.....	7
Section 3	Software Installation.....	8-9
	3.1 Installing PublisherNET Server.....	8
	3.2 Installing DiscPilot.....	8
	3.2.1 Installing Nero.....	8
	3.2.2 Installing Print Drivers.....	8-9
	3.2.3 Installing DiscPilot and CD Label Designer.....	9
Section 4	Connection Set Up.....	10-17
	4.1 Connecting the CopyDisc to the Server PC.....	10
	4.2 Connecting to the PublisherNET Server (server PC only).....	10-12
	4.3 Connecting DiscPilot to the PublisherNet Server.....	12-15
	4.4 Job Type.....	15
	4.5 Printer Type.....	15
	4.6 Ink Level.....	16
	4.7 Disconnecting DiscPilot from the PublisherNet Server.....	16-17
Section 5	Operating DiscPilot.....	18-45
	5.1 Make a Disc.....	18-27
	5.2 Create and Record a New Image.....	27-31
	5.3 Print Label Only.....	31-39
	5.4 Transfer Files.....	40-44
	5.5 Create Image.....	44
	5.6 Create Label.....	44
	5.7 Help.....	44-45

SECTION 1: Introduction

Disc Pilot provides networked duplication on all CopyDisc duplicators, CopyDisc printers and combined CopyDisc duplicators and printers as a **factory fitted option**.

This easy to use yet sophisticated and versatile CD and DVD duplicator and printer management software system, provides multiple users with access to one or more of Verity Systems range of automatic duplicators and combined duplicators and printers. DiscPilot allows a CopyDisc to act as a peripheral device across a network.

DiscPilot is a completely new way of networking your CopyDisc. Instead of relying on a traditional Cat5 cable network connection, uses a high speed USB connection for improved reliability and data transmission rates.

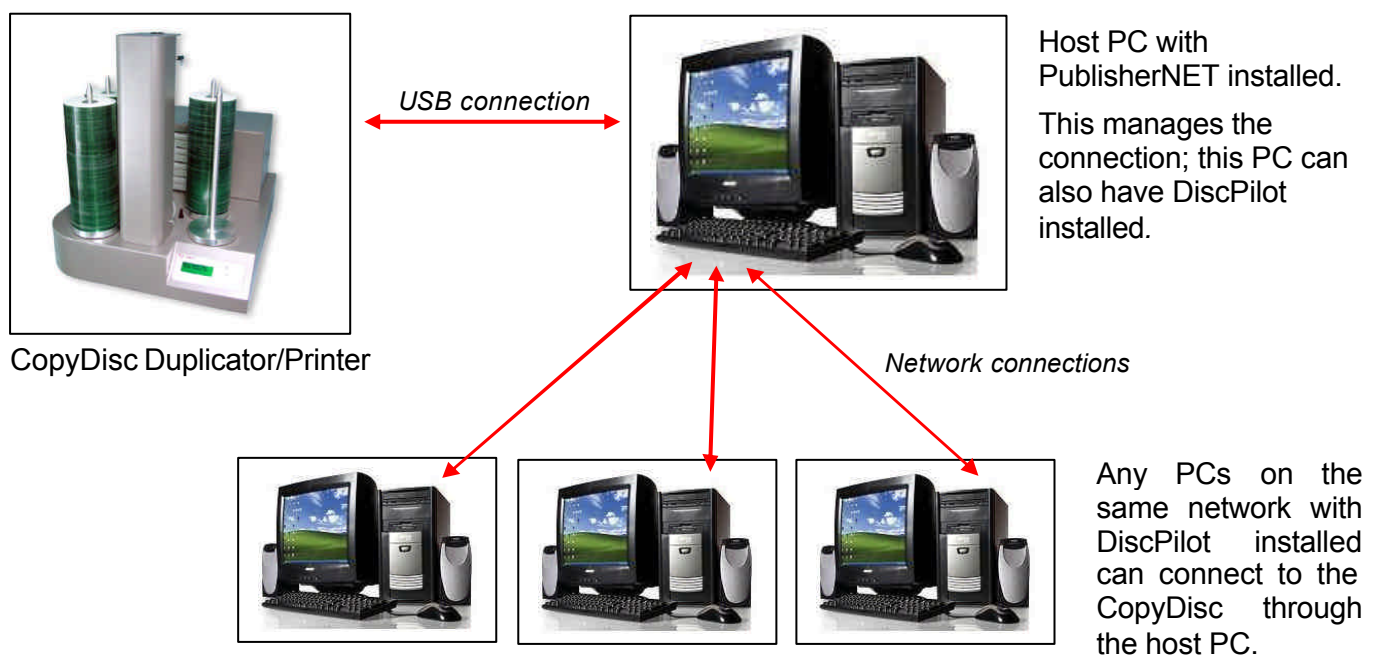
Verity Systems **PublisherNET** forms the link between the CopyDisc and the host PC. **PublisherNET** establishes a connection with the CopyDisc through the USB connection and manages data transmission.

This Windows based software suite enables you to duplicate an ISO master stored on your file server, and to request the required number of discs for your duplicator to produce. CD master images can be stored on the file server and the required number of copies requested direct from the nominated PC. CD/DVD image masters and print images (where applicable) can also be selected from the duplicator.

DiscPilot has the ability to queue jobs (with or without print images). For example: an operator could queue 8 separate masters for duplication.

DiscPilot has a fully integrated disc image creation tool (using Nero technology) and a fully integrated disc label creator. From within DiscPilot you can create your labels, disc images, combine and send them as a 'job' and manage the files on your CopyDisc hard drive.

The diagram below shows the typical setup of the CopyDisc.



SECTION 2: System Requirements

2.1 System Requirements – Disc Pilot

Operating system

- Windows XP Pro (service pack 2 or higher)
- Windows 2000 (service pack 4 or higher)

Hardware

- Your PC must have a 500 MHz system or higher recommended
- You must have at least 64 MB RAM memory, more recommended
- Graphics card with 8 MB or higher
- Ideally a screen resolution of 1024x768 or greater
- 700 MB of free hard drive space, more would be better.
- 10/100 Mbps Ethernet capability

2.2 System Requirements – PublisherNET

Operating system

- Windows XP Home (up to 5 clients)
- Windows XP Pro (service pack 2 or higher, up to 11 clients)
- Windows Server 2003 (or higher, over 11 clients)

Hardware

- Your Server must have a 500 MHz system or higher recommended
- You must have at least 64 MB RAM memory, more recommended
- Graphics card with 2 MB or higher
- Ideally a screen resolution of 800x600 or greater
- 700 MB of free hard drive space, more would be better.
- 10/100 Mbps Ethernet capability
- 1 off USB2 ports



NOTE:

The Server and Client can be run on the same PC in which case the Client specification would apply but there would be no requirement for a network connection.

2.3 Other System Requirement Considerations

- The system requirements shown above assume a small network or duplicators running basic jobs via the DiscPilot software.
- The requirements for any given network will depend on the size and number of simultaneous duplicators being targets.
- The memory requirement when creating print file images depends on the printer being targeted. The lowest memory requirements are for the Prism thermal printer with the largest memory requirements being for the TEAC p-55 printer.
- Creating print file images is very processor intensive, so a fast CPU is recommended.
- Building ISO images can be very processor and I/O intensive for short periods of time, so a fast CPU and fast hard disk are also recommended,

SECTION 3: Software Installation

The following details the installation procedure for the PublisherNET server and for the DiscPilot client. PublisherNET need only be installed once on to the server PC whilst DiscPilot can be installed on to many client PCs to allow multiple users to access the CopyDisc across your network.

3.1 Installing the PublisherNET Server

The PublisherNET server should be installed on the server PC only.

Insert the PublisherNET software CD into the host PC's CD-ROM and follow the on screen instructions. A PublisherNET icon (shown below) should appear on the host PC's desktop.



The PublisherNET folders (Jip, Shared and Uninstall) should be automatically installed into the Program Files folder on the server PC. Once installed, these folders have to be shared, I.E. access rights have to be given to any subsequent client PCs. The Publisher NET Server application has a shared folder called **PublisherNetShared**. It is this shared folder that DiscPilot on client PCs should be connected to. This folder is normally located in **Program Files/PublisherNet Server/Shared**.

3.2 Installing DiscPilot

DiscPilot comes with 3 software discs which must be installed on every client PC's intending to use DiscPilot. Each disc will guide you through the installation process by the Setup Wizard.

3.2.1 Installing Nero

DiscPilot requires Nero version 6.6 to 7. If you already have Nero 6.6 to 7 installed on your PC you do not need to install the Nero software. If however your version of Nero is not 6.6 you will need to remove that version of Nero and install Nero version 6.6 included.

Insert the NERO software CD into the client PC's CD-ROM and follow the onscreen instructions.



NOTE:

Nero needs to be installed in the default folder (this is usually Program Files) otherwise DiscPilot will not be able to locate it once loaded. If you already have Nero installed on your PC and it is not located in the default folder you will need to remove it and reinstall.

3.2.2 Installing the Printer Driver

Insert the Printer Driver CD (Disc No. 2) into your PC's CD-ROM and follow the onscreen instructions. The OptiPrinter Pro print driver should auto-install. This is a requirement of the CD Label Designer software, even if the printer you are using with the CopyDisc is not the OptiPrinter Pro.

To install other print drivers, go to the **control panel** on the server PC, select **Printers** and then select **Add Printer**. Follow the on screen instructions and when the wizard asks you to select the printer model, click the **Have Disk** button. Browse to the appropriate

printer folder (e.g. Prism), drill down until you reach the **.inf** file and click **open**. Continue with the Wizard to install the print driver.

3.2.3 Installing CD Label Designer and DiscPilot

Insert Disc No.3 containing the CD Label Designer and DiscPilot software into the client PC's CD-ROM and follow the onscreen instructions to install both programs.

SECTION 4: Connection Set Up

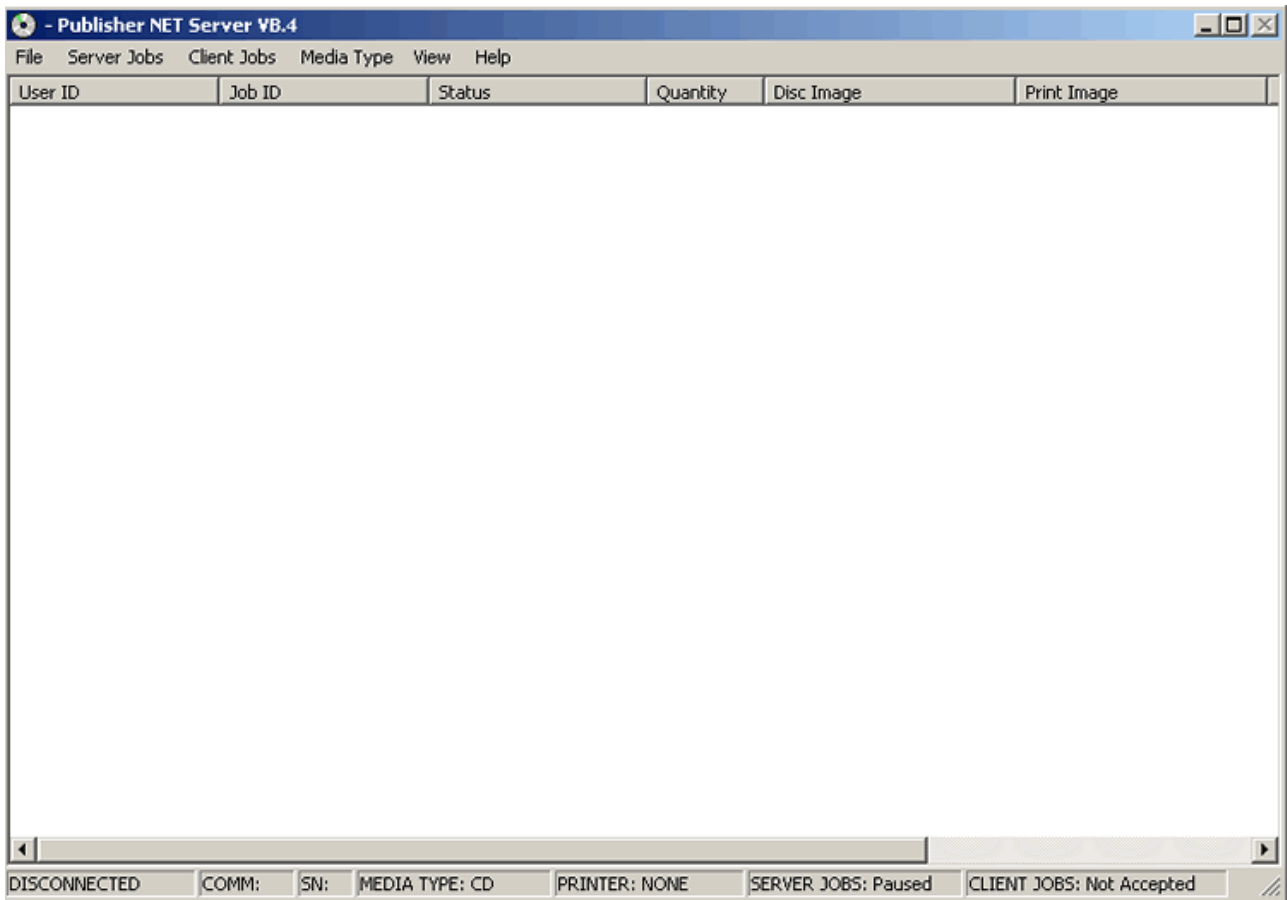
Before DiscPilot can be run, you will need to connect the Server PC to the PublisherNET server.

4.1 Connecting the CopyDisc to the Server PC

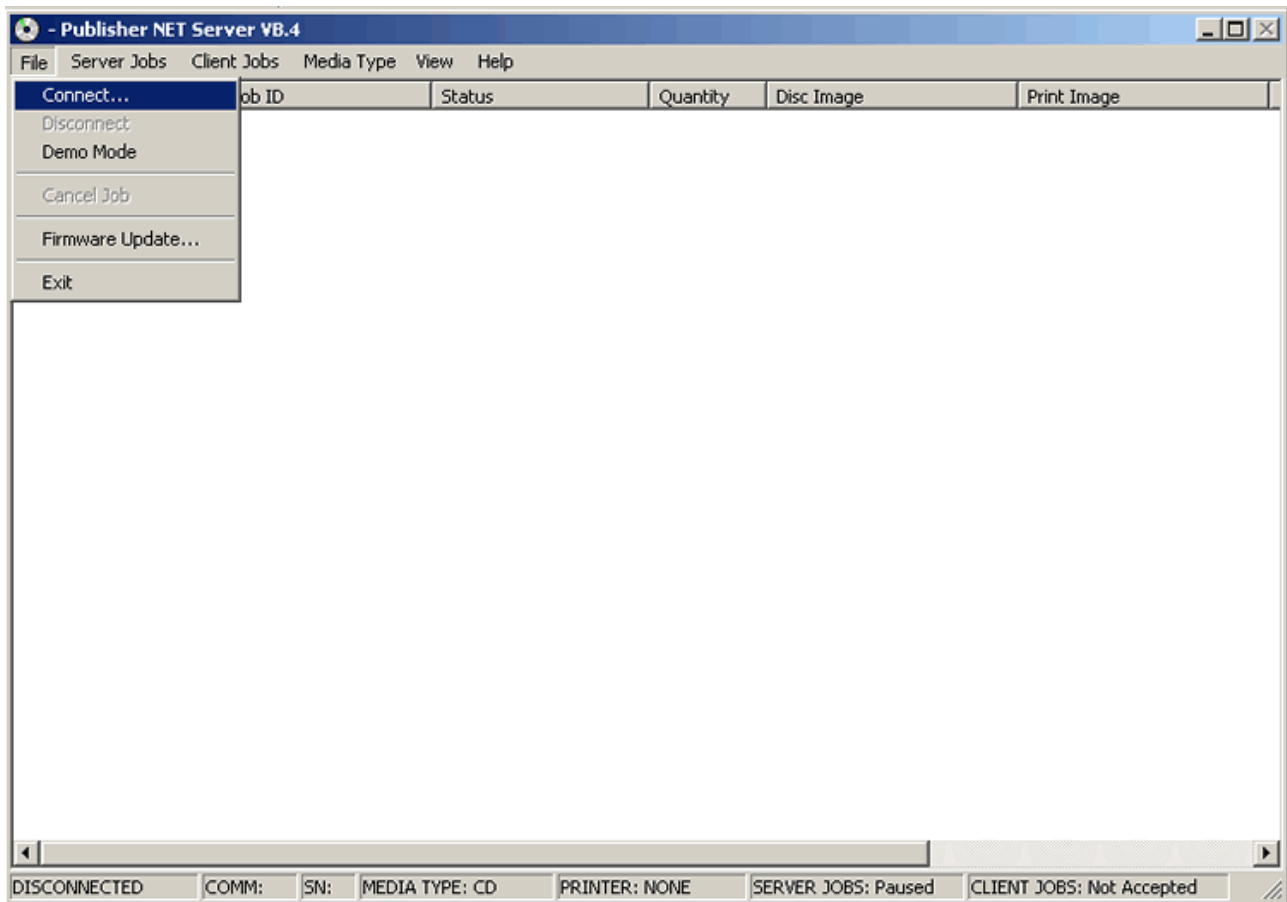
Firstly connect the CopyDisc to the Server PC via the USB cable.

4.2 Connecting to PublisherNET Server (Server PC only)

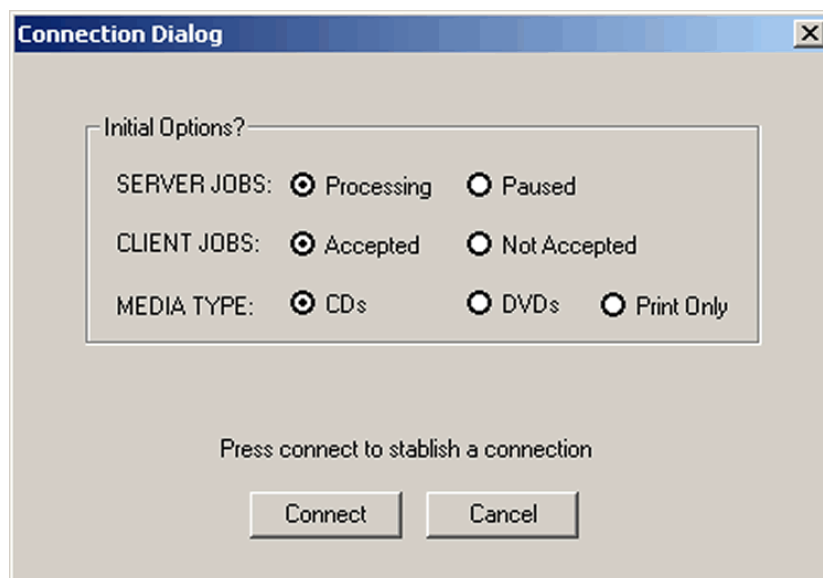
Double click the PublisherNET icon on the desktop to open to PublisherNET server. The following screen will appear.



Select **File** and then select **Connect** from the drop down menu.



The **Connection Dialogue** box will open.



The connection dialogue box offers you options: SERVER JOBS, CLIENT JOBS and MEDIA TYPE.

The SERVER JOBS option allows you to pause the processing of jobs while allowing the CopyDisc to remain online. This means that users can still submit jobs but you can safely top-up media levels. Jobs submitted while the system is paused will resume once the “processing” option is reselected.

The CLIENT JOBS option allows you to refuse users connection to the CopyDisc.

MEDIA TYPE offers you the choice of CD, DVD or Print Only. Select the correct option depending on the type of media that is currently loaded onto the CopyDisc. This will inform users via the “Job Type” indicator (see section 4.3) on the DiscPilot screen, of what type of jobs they can submit. If the CopyDisc unit is a print only unit, I.E. no drives fitted, select the Print Only option. Users will be able to see that they can only print to the CopyDisc and not burn discs.

All of these options are changeable while the connection is live by using the drop down menus in PublisherNET. For example, if you change the loaded media from CD to DVD, you should change this option within PublisherNET so that your users know what type of jobs they can currently submit.

Once selected, press **Connect**.

This establishes the PublisherNET server on the host PC.

If you wish, you could install DiscPilot on the Server PC also. If so, PublisherET should remain running in the background whilst you operate DiscPilot. You can now minimise this screen, if you wish.

4.3 Connecting DiscPilot to the PublisherNET Server

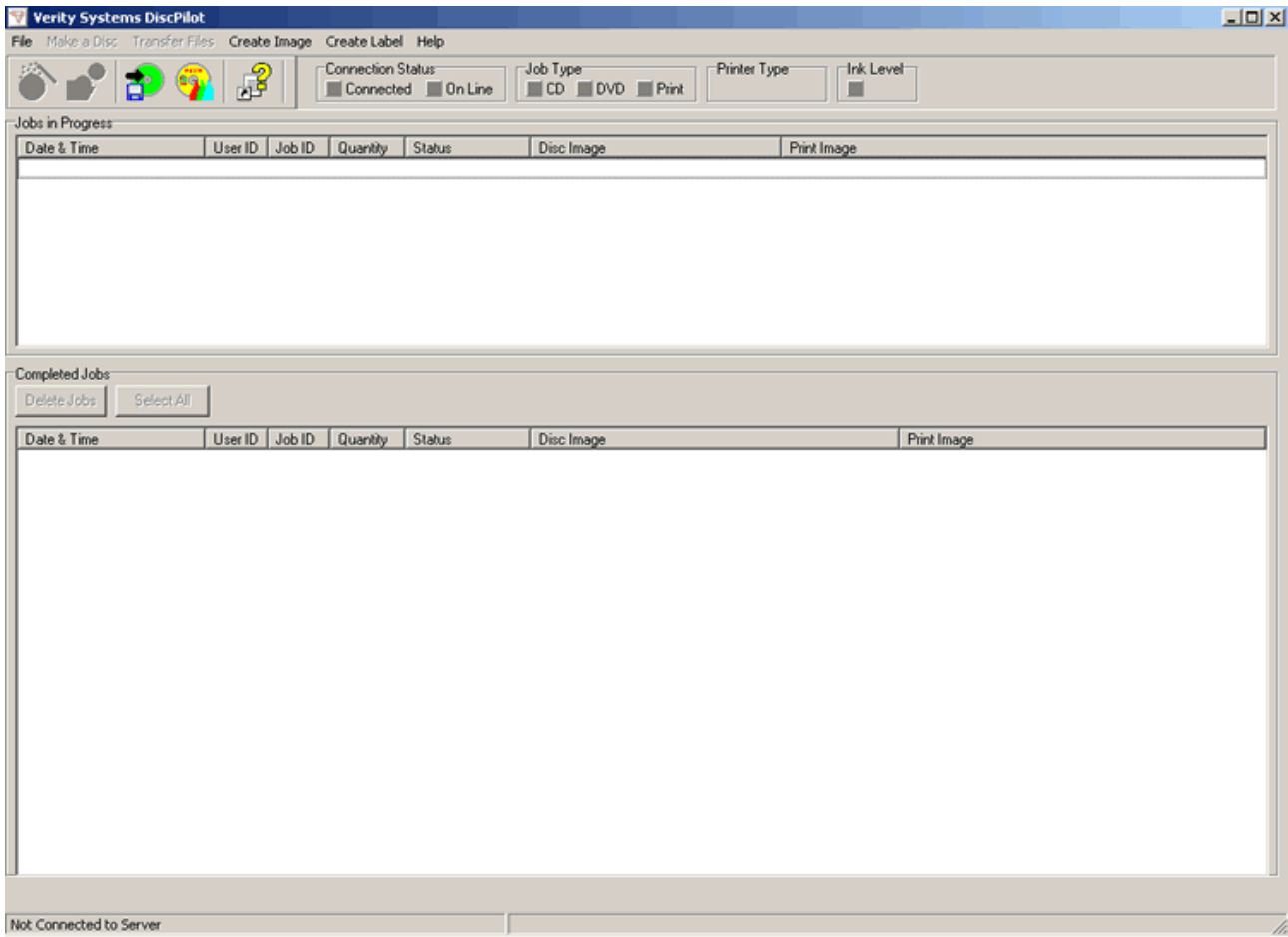
Open DiscPilot by double clicking the DiscPilot icon (see below) on your PC's desktop.



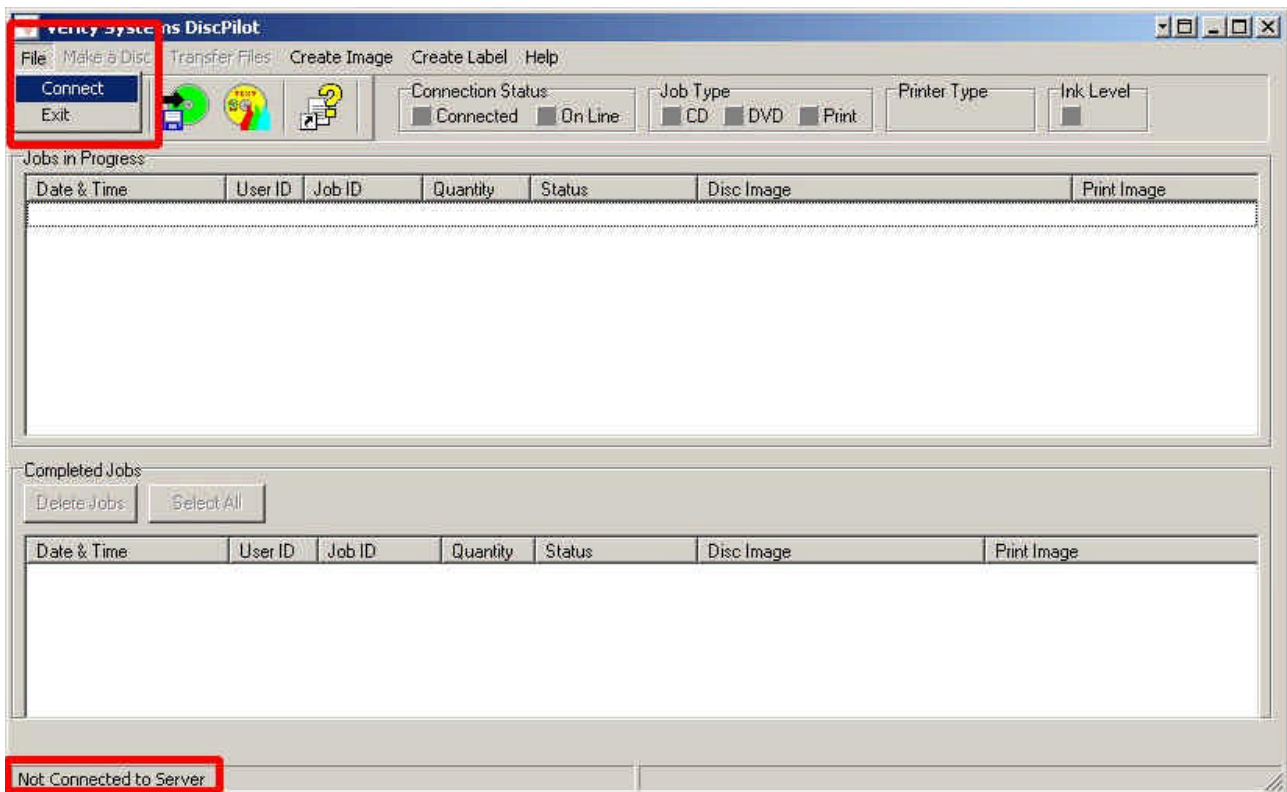
The following screen will open.

You will notice that the **Connection Status** indicators are greyed out and at the bottom of the screen, the status bar shows **Not Connected to Server**. DiscPilot will not be fully operational until a connection between it and the PublisherNET server has been established.

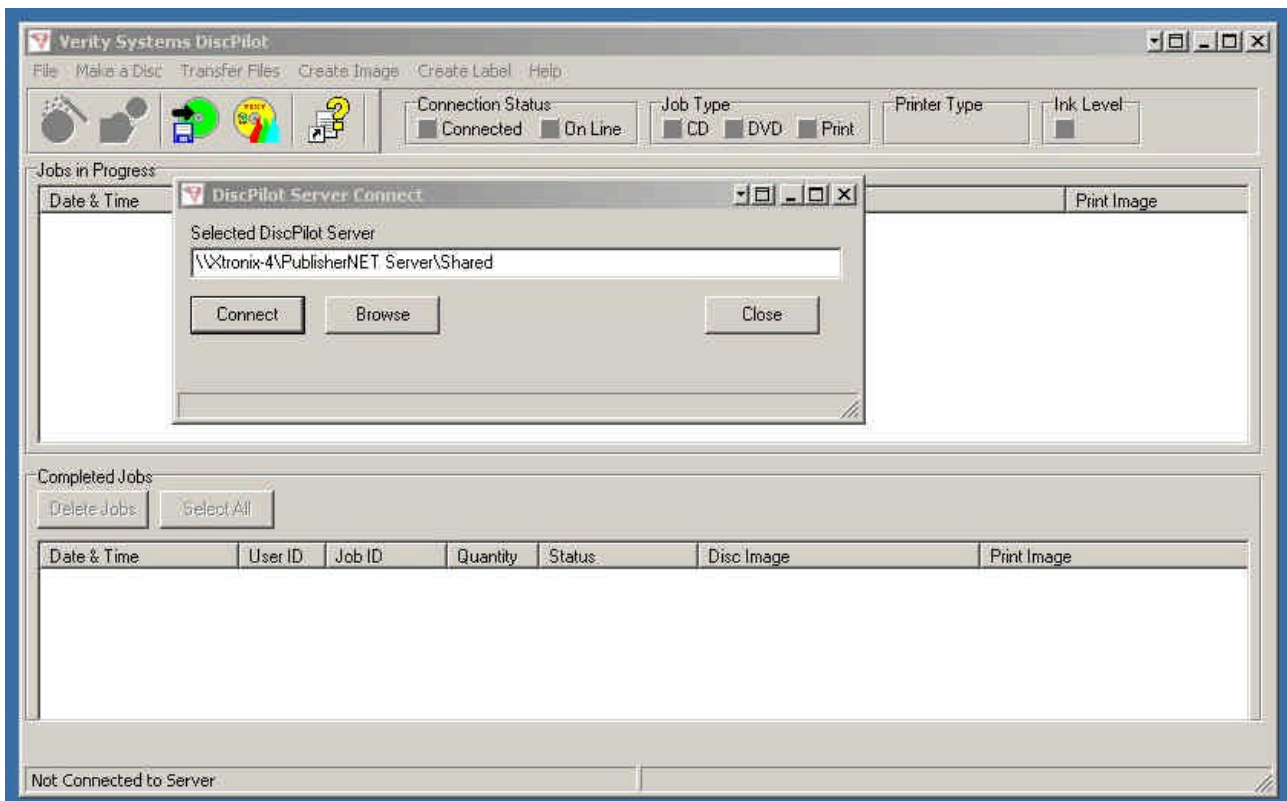
You are able to create image and print files without the PublisherNET and DiscPilot connection being established, and these icons are clearly visible as a result, but you will not be able to produce discs via DiscPilot until a connection is made. See sections 5.5 and 5.6 for details on how to create image and print files.



To connect to PublisherNET, select the **File** menu item and from the drop down menu select **Connect**.



This will open the **Connect Dialog** box and allow you to browse for the PublisherNET Server. To browse to the server, click on the Browse button and navigate to the PublisherNET Server's **Shared** folder.

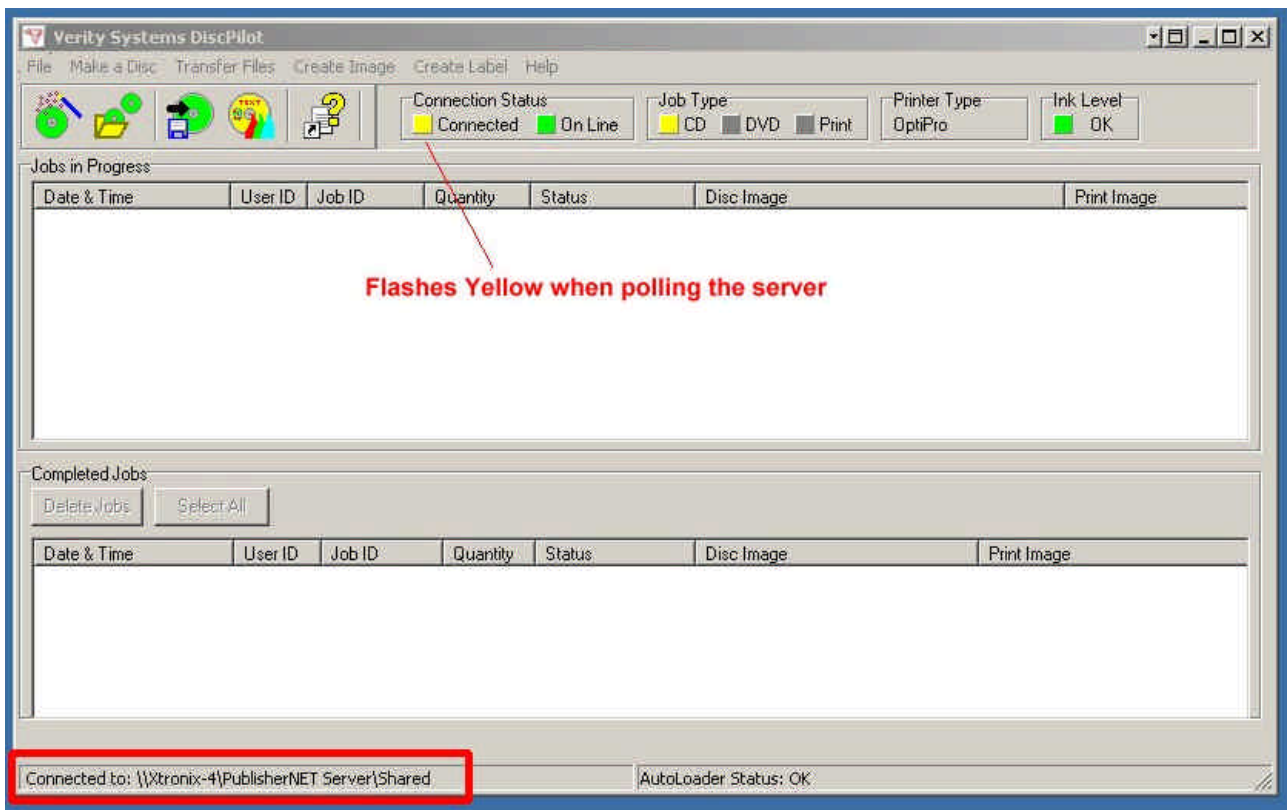


In the above example, the PublisherNET Server is located on the remote PC “Xtronix-4”. The Publisher NET Server application has a shared folder called **PublisherNetShared**. It is this shared folder that DiscPilot should be connected to. This folder is normally located in **Program Files/PublisherNet Server/Shared**.

If the DiscPilot application has been connected to a Server previously, the path to that server will be displayed. If the DiscPilot application has not been connected to a server previously, the path will be blank.

When the correct Server path is displayed, use the **Connect** button to connect to the Server.

When all the Server files have been validated, the Connect screen will close and the DiscPilot main screen will show that the DiscPilot is connected to the Server. The **Connection Status** indicator will be green and will flash yellow every 15 seconds as it polls the Server.



The status bar at the bottom of the screen shows the name of the PublisherNET Server that the DiscPilot is connected to.

4.4 Job Type

The Job Type file shows what type of media is currently loaded onto the CopyDisc and thus what type of jobs are possible to submit. This is defined in the PublisherNET software.

4.5 Printer Type

Printer type shows the model of printer that is connected to the CopyDisc (if applicable). This means that the user can ensure they create or select an appropriate PRN file to work on the system. This is defined by the type of printer setup in the CopyDisc's setup menu.

4.6 Ink Level

Ink Level displays the ink level within the OptiPrinter Pro printer attached to the CopyDisc. This feature is only available with the OptiPrinter pro inkjet printer.

4.7 Disconnecting DiscPilot from the PublisherNET Server

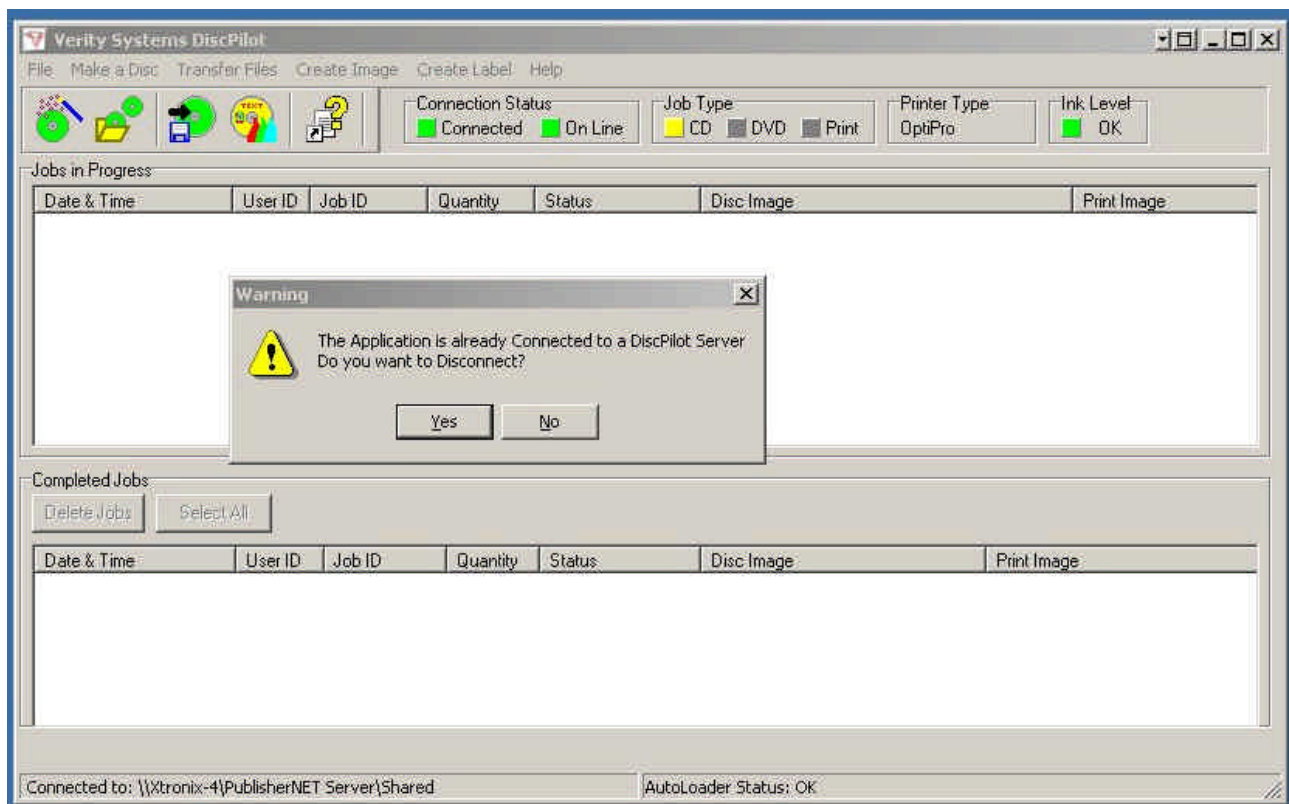
To disconnect from the server, select the **File** menu item. From the drop down menu, select **Disconnect**. This will cause DiscPilot to disconnect from the PublisherNET Server.



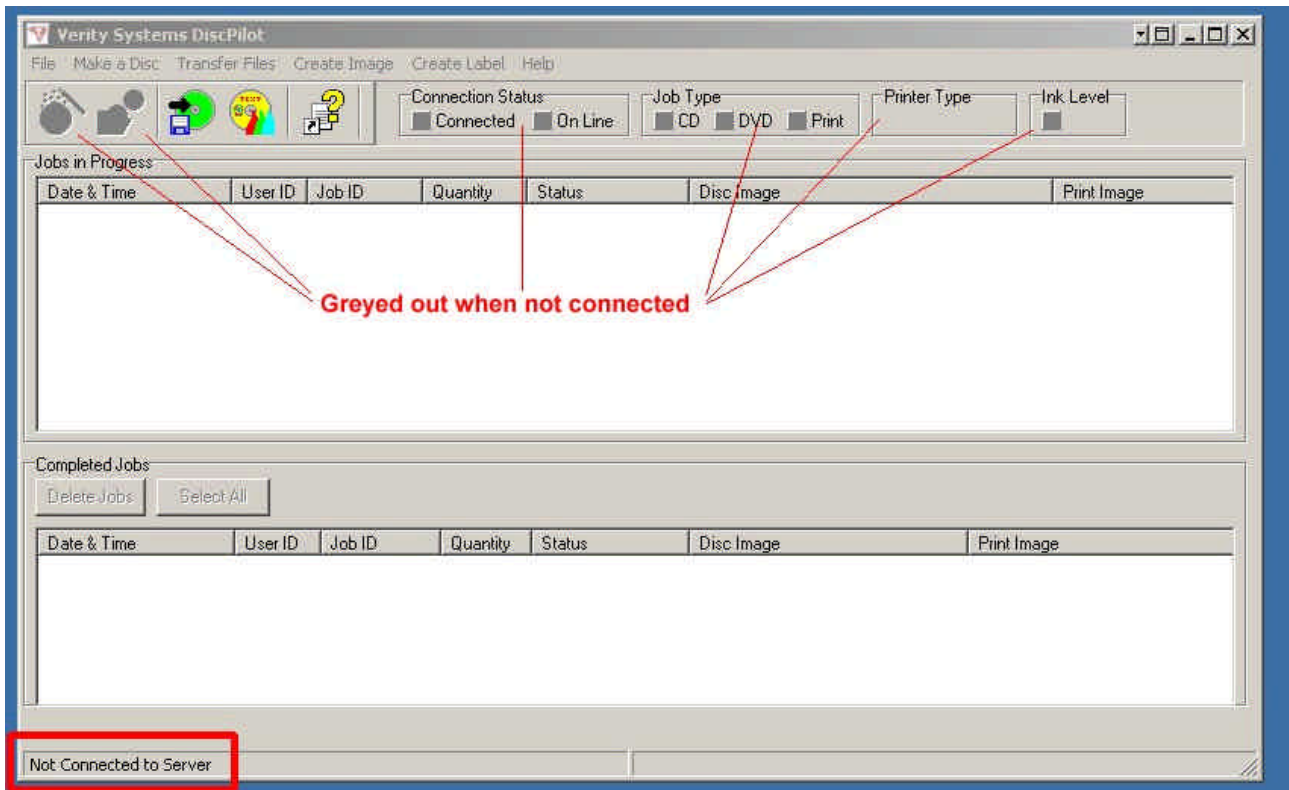
NOTE:

The drop down menu will only show the Disconnect option if the DiscPilot client is actually connected to a server.

The following screen will appear, prompting you to confirm that you wish to disconnect from the server.



Once disconnected, the **Connection Status** indicator will turn grey and the status bar at the bottom of the screen will show that DiscPilot is not connected.

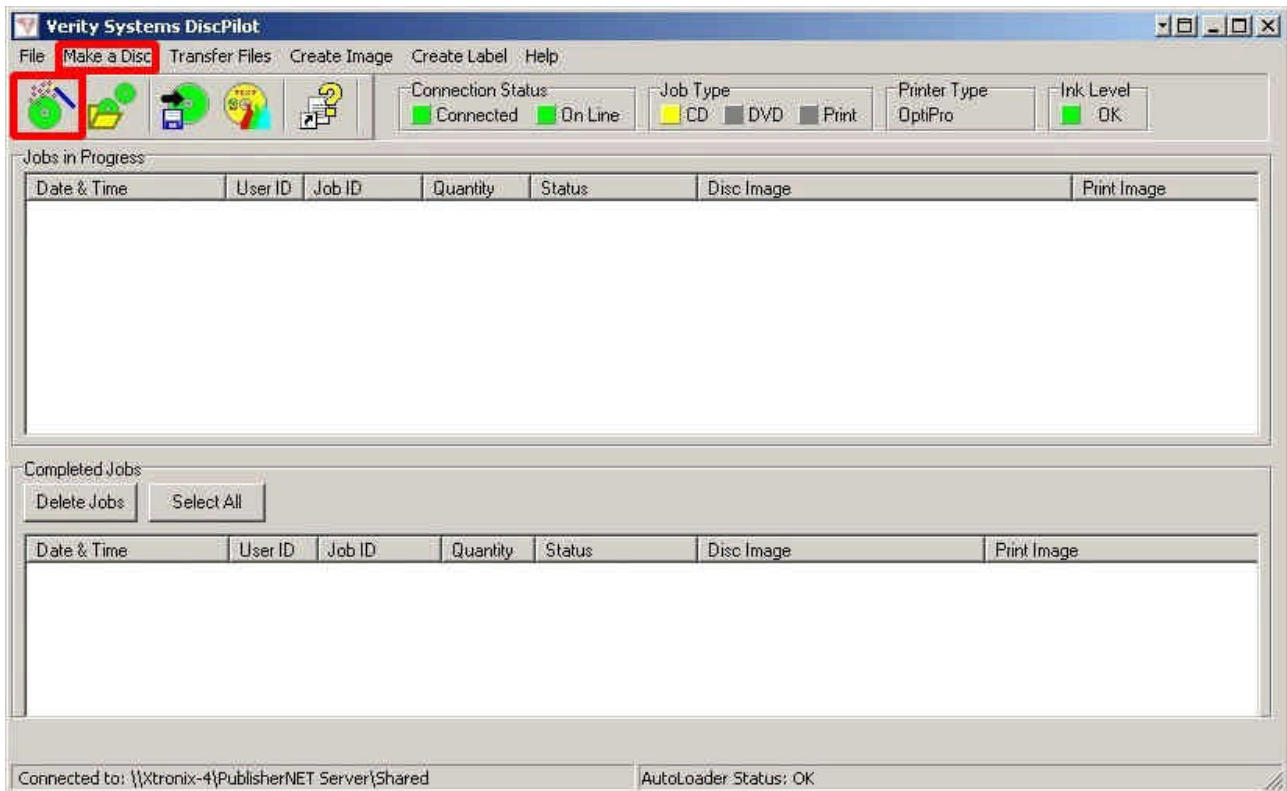


Section 5: Operating DiscPilot

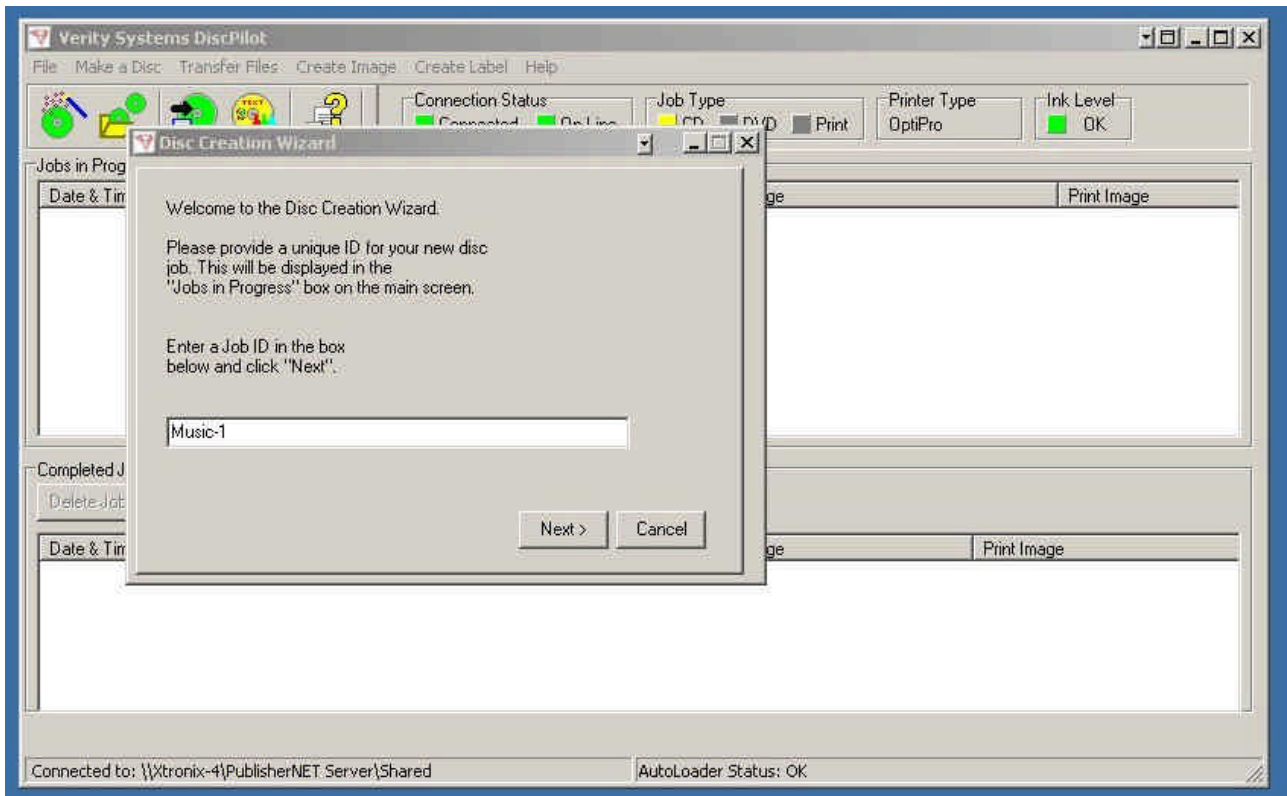
Once all connections have been established, you are ready to start using DiscPilot to copy and print discs remotely from your PC.

5.1 Make A Disc

The “Make a Disc” wizard provides the user with easy to use, step by step procedures for copying and/or printing discs. To launch the wizard, click the “Disc Wizard” icon (highlighted below) or click the “Make A Disc” menu item.

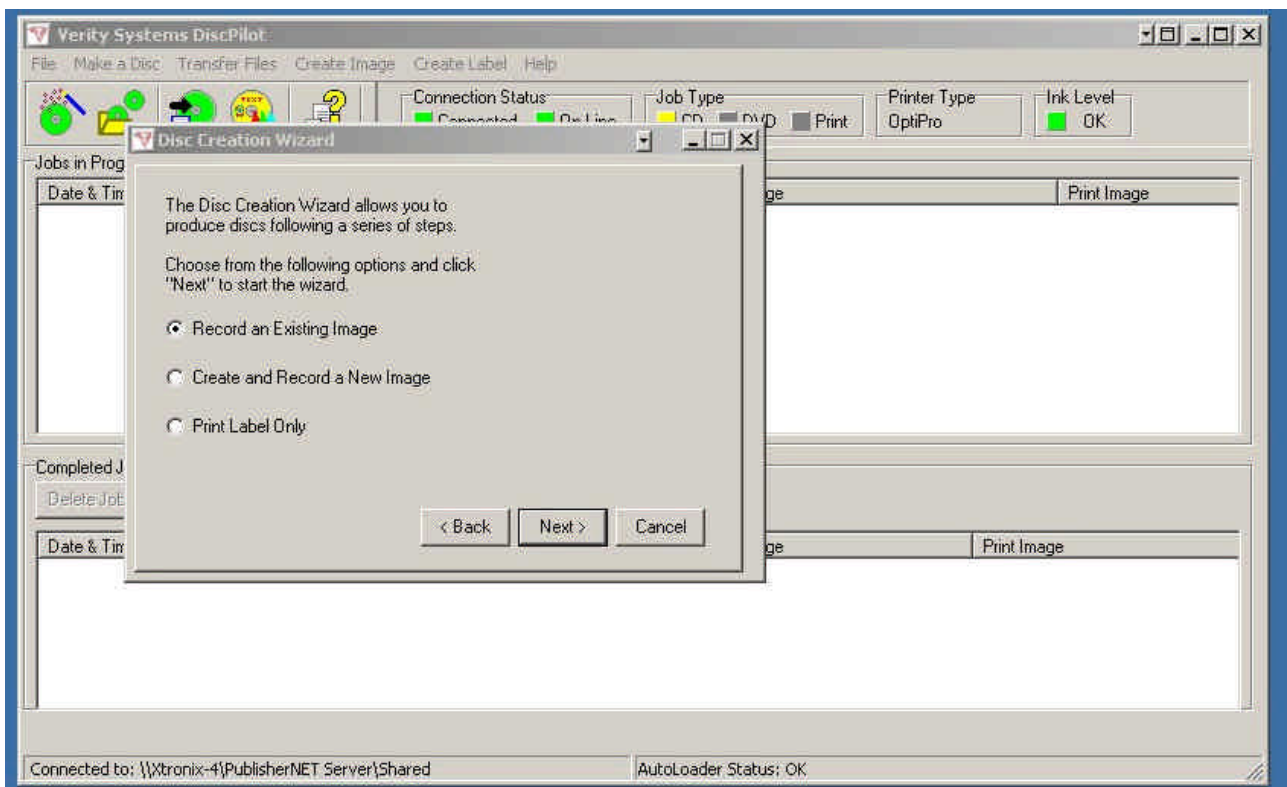


The Disc Creation Wizard is launched.



You will be asked to provide a name for the job you are creating. All jobs submitted must have a unique Job ID. The Job ID must not be the same as any jobs already present on the “Jobs in progress” panel.

Enter a Job ID and click the “Next” button.



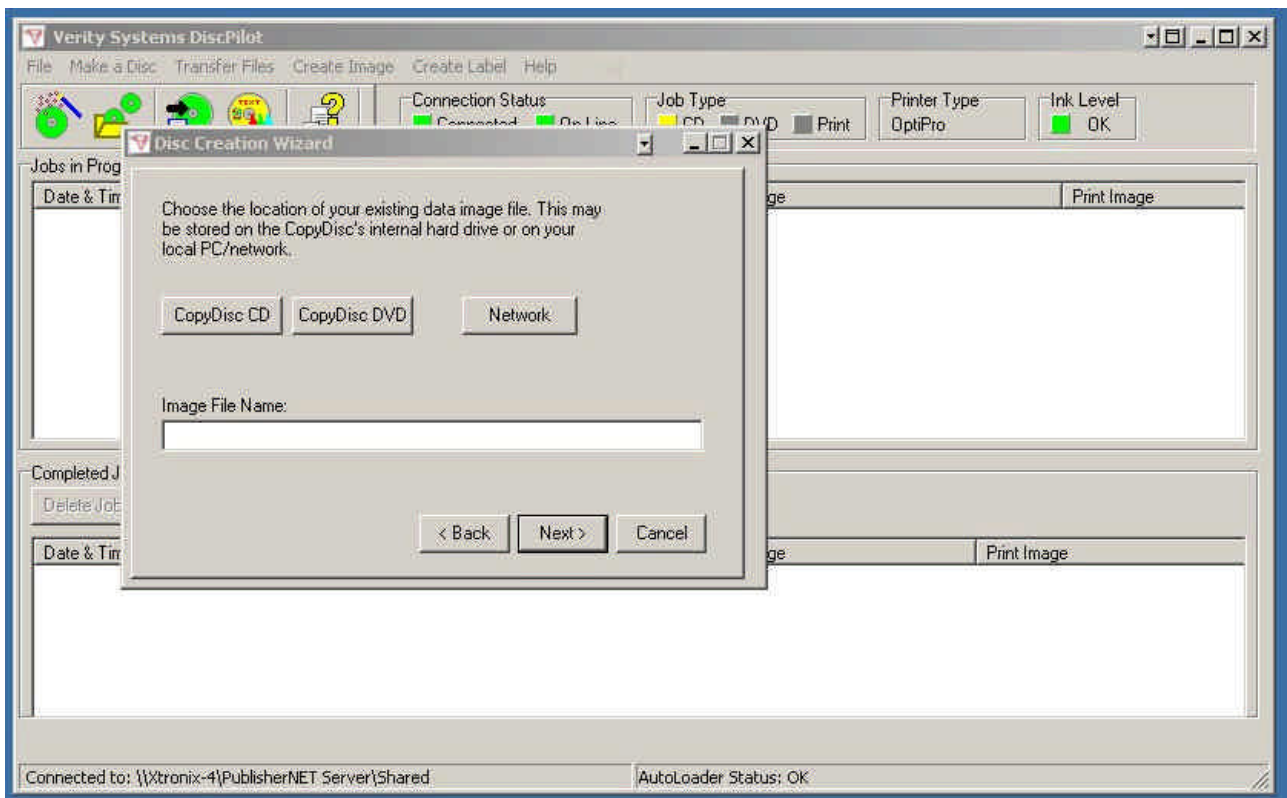
Next, choose the type of job you wish to create.

Record an Existing Image: This is an image stored on either the local PC hard disc, a network resource or on the remote CopyDisc's internal hard drive itself.

Create and Record a New Image: This will launch Nero and allow you to create a new data or audio image file. (See Section 5.2)

Print Label Only: This will allow you to print a label without copying (burning) an image. (See Section 5.3)

Once you have chosen the type of job you wish to create, click the "Next" button.



If you chose to record an existing image, the next screen asks the location of the existing image file.

CopyDisc CD: Click this button for CD image files (data and audio) stored on the remote CopyDisc's internal hard drive.

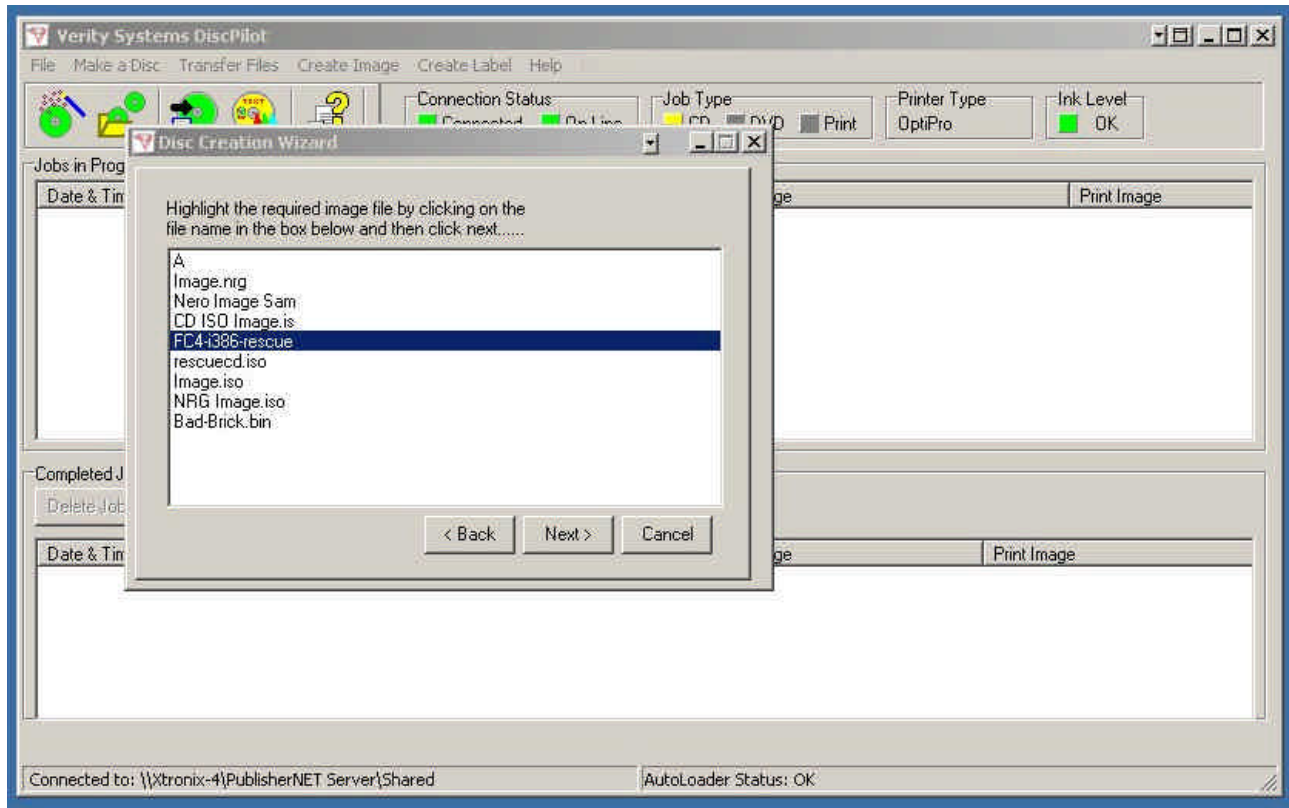
CopyDisc DVD: Click this button for DVD image files (data only) stored on the remote CopyDisc's internal hard drive.

Network: Click on this button for image files stored on the local PC's hard drive or stored on a network resource.

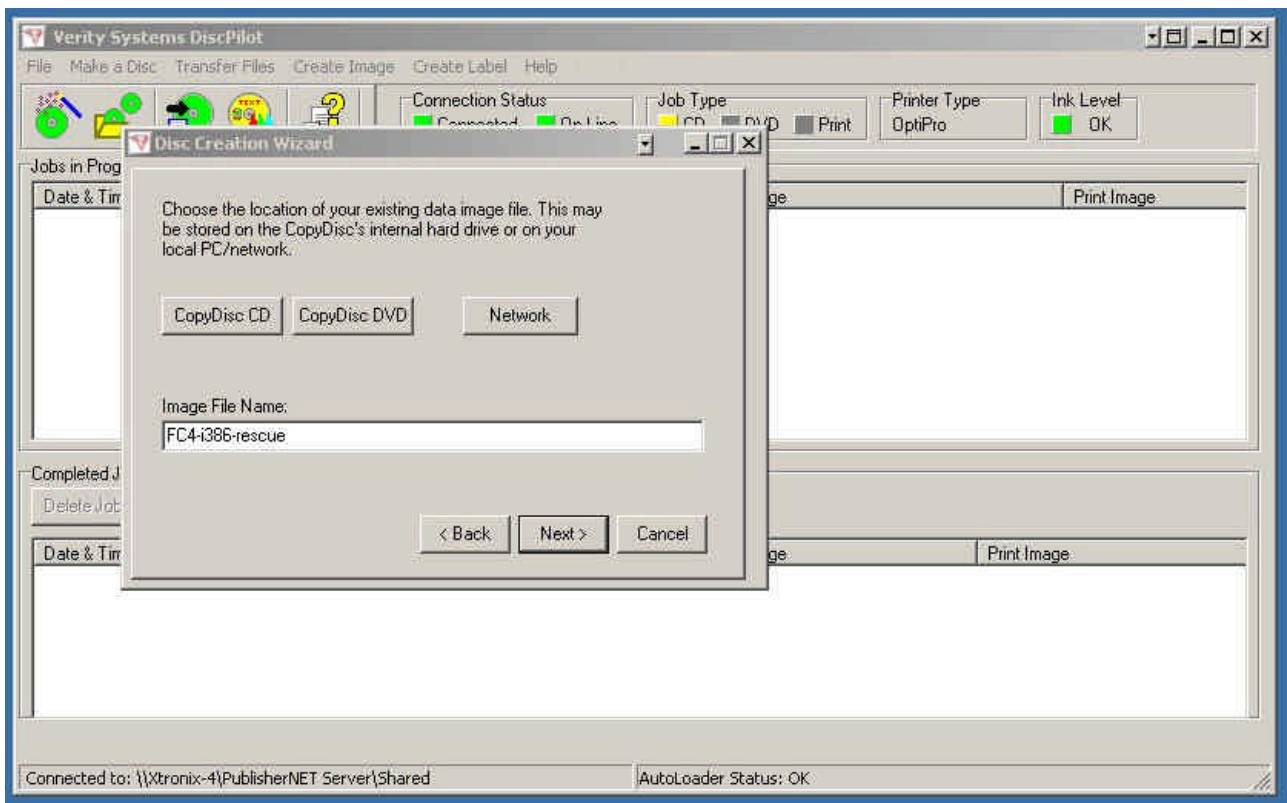
Click on the required button to select the existing image file.


NOTE:

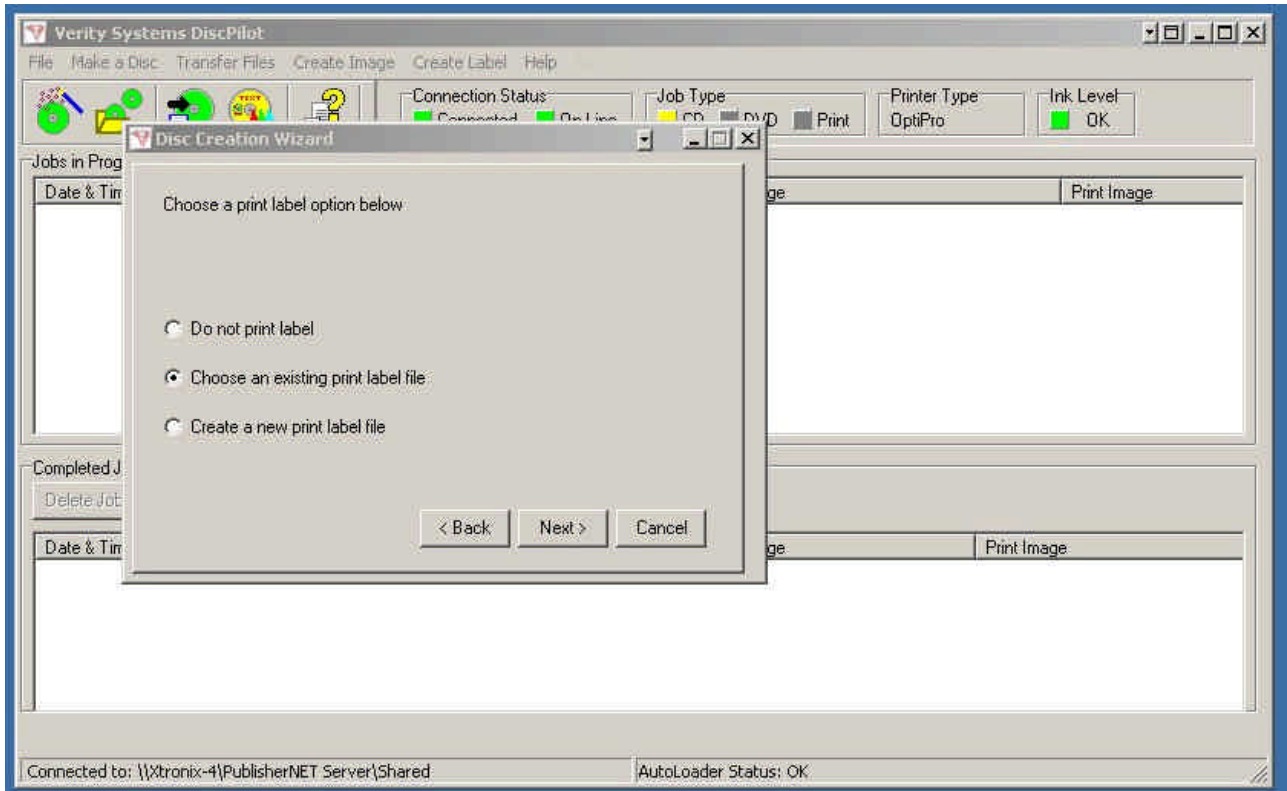
Image files can either be ISO Data Image format (.iso), Nero Data Image format (.nrg) or Nero Audio Image format (.nrg).



Choose the required image file from those listed. The above example shows CD image files stored on the remote CopyDisc's internal hard drive. Click on the required file to highlight it and then click the "Next" button.



The above shows the selection of the image file. Click on “Next”.



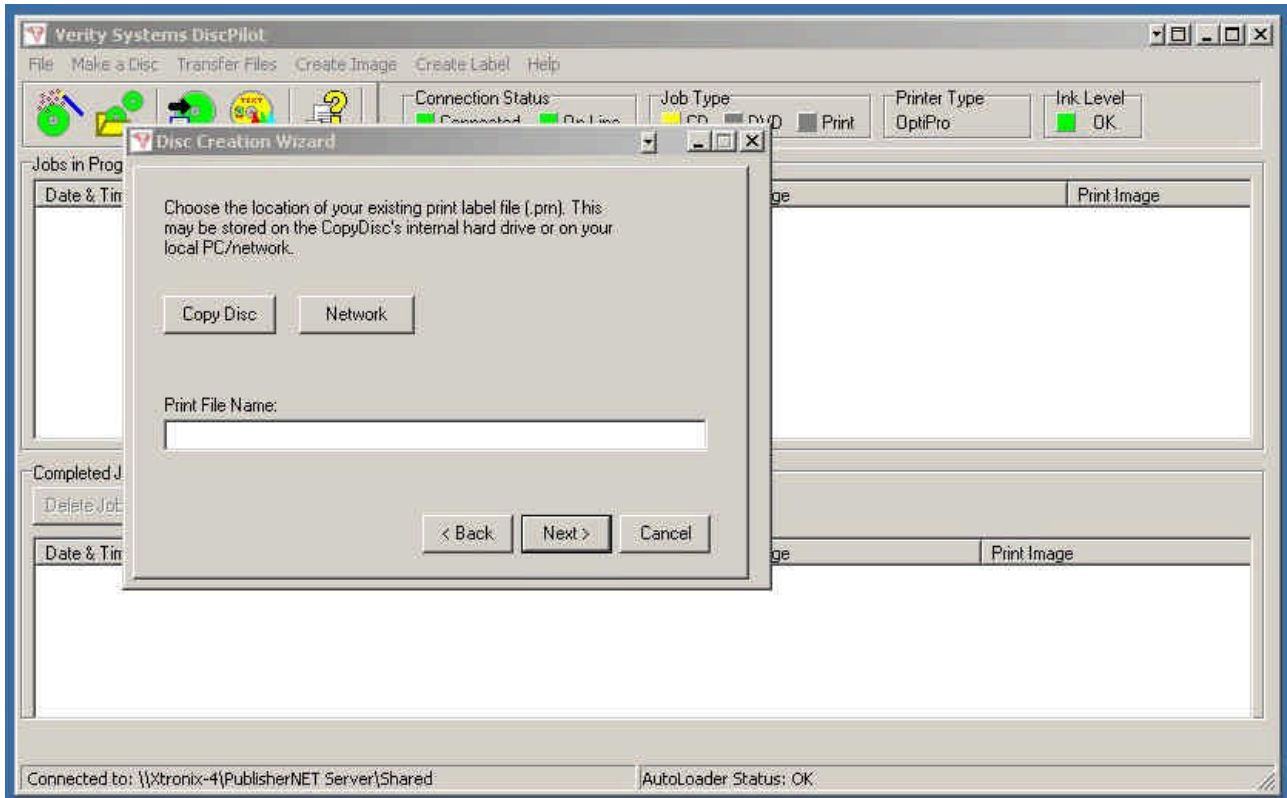
You will now be asked if you want to print a label onto the CD after it has copied.

Do Not Print Label: Select this option if no label is to be printed.

Choose an Existing Print Label File: Select this option to print a label file stored either on the local hard disc, a network resource or on the remote CopyDisc's internal hard drive.

Create a New Print Label: Select this option to create a new print label. This will launch the "Label Creator" application to allow you to create a new label.

Select the required option and click the "Next" button.



If you elect to print an existing print label, the above screen will appear.

CopyDisc: Click this button for print files stored on the remote CopyDisc's internal hard drive.

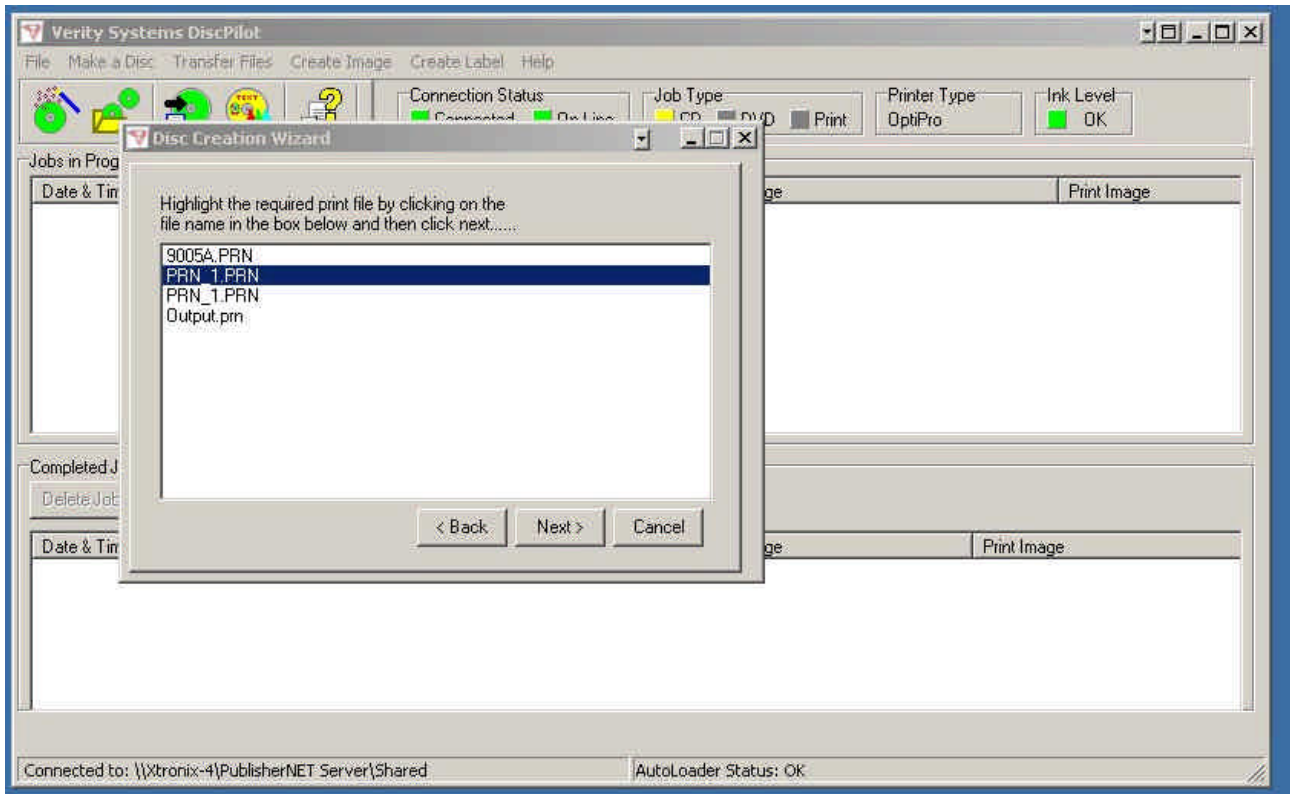
Network: Click this button for print files stored on the local PC's hard drive or stored upon a network resource.

Click on the required button to select the print file.

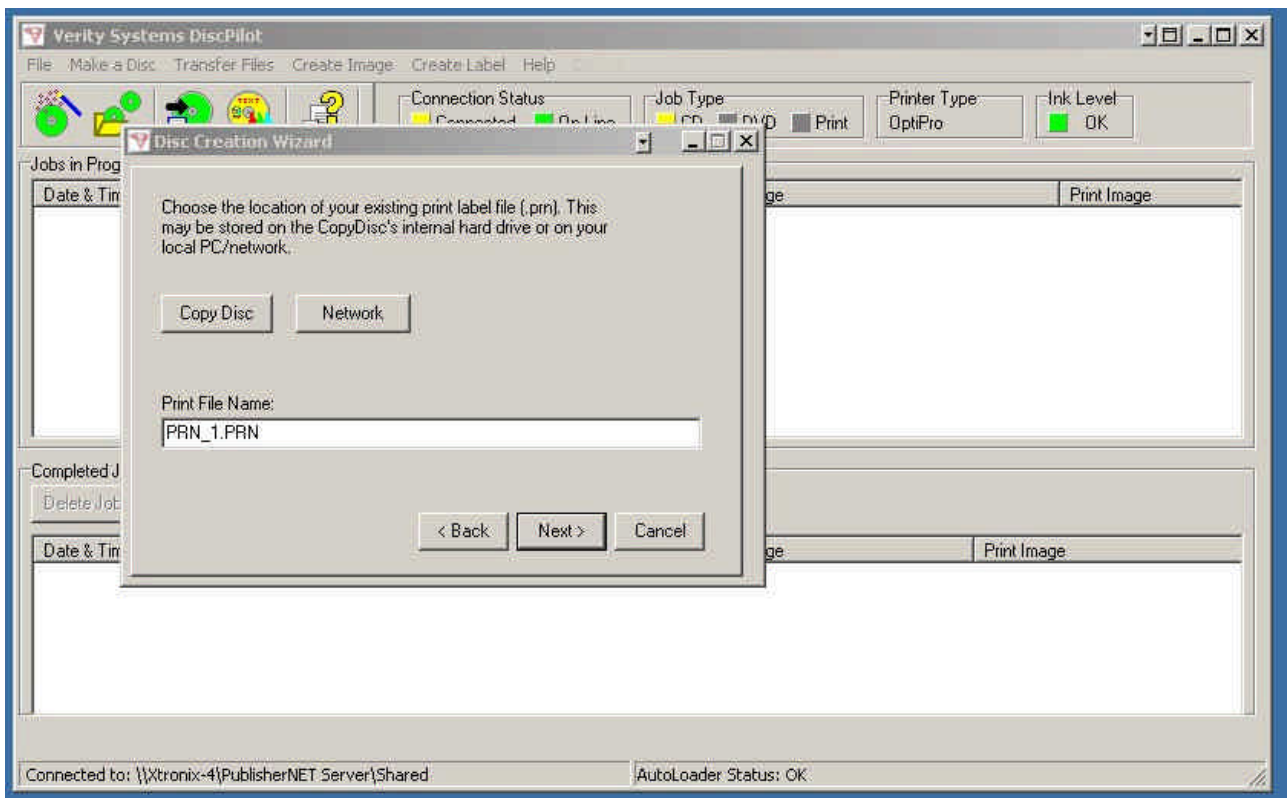


NOTE:

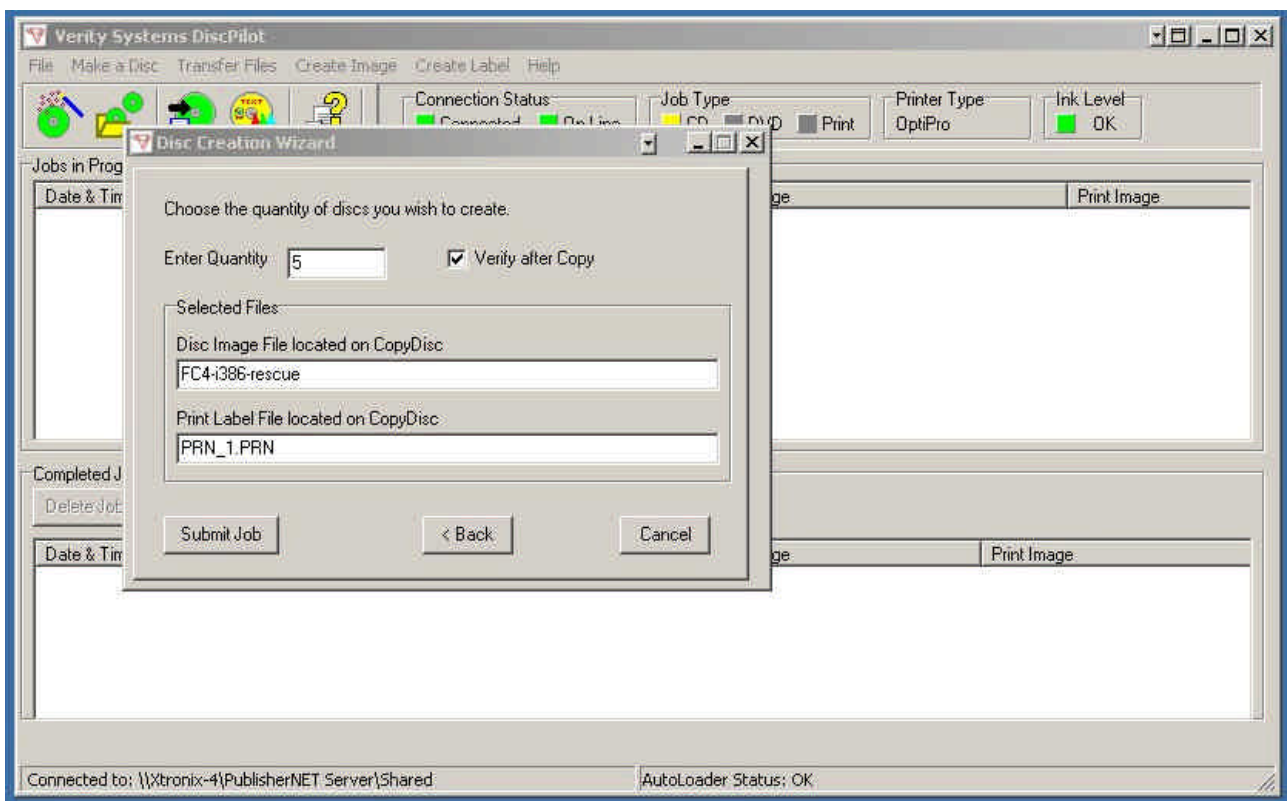
Print files are in the printer output format (.prn) and the correct file for the printer currently attached to the CopyDisc must be chosen. For example, if the CopyDisc features an OptiPrinter Pro inkjet printer, you must ensure that the .prn file chosen is a .prn file created using the OptiPrinter Pro print driver has been selected.



Choose the required image file from those listed. The above example shows print files stored on the remote CopyDisc's internal hard drive. Click on the required file to highlight it and then click the "Next" button.



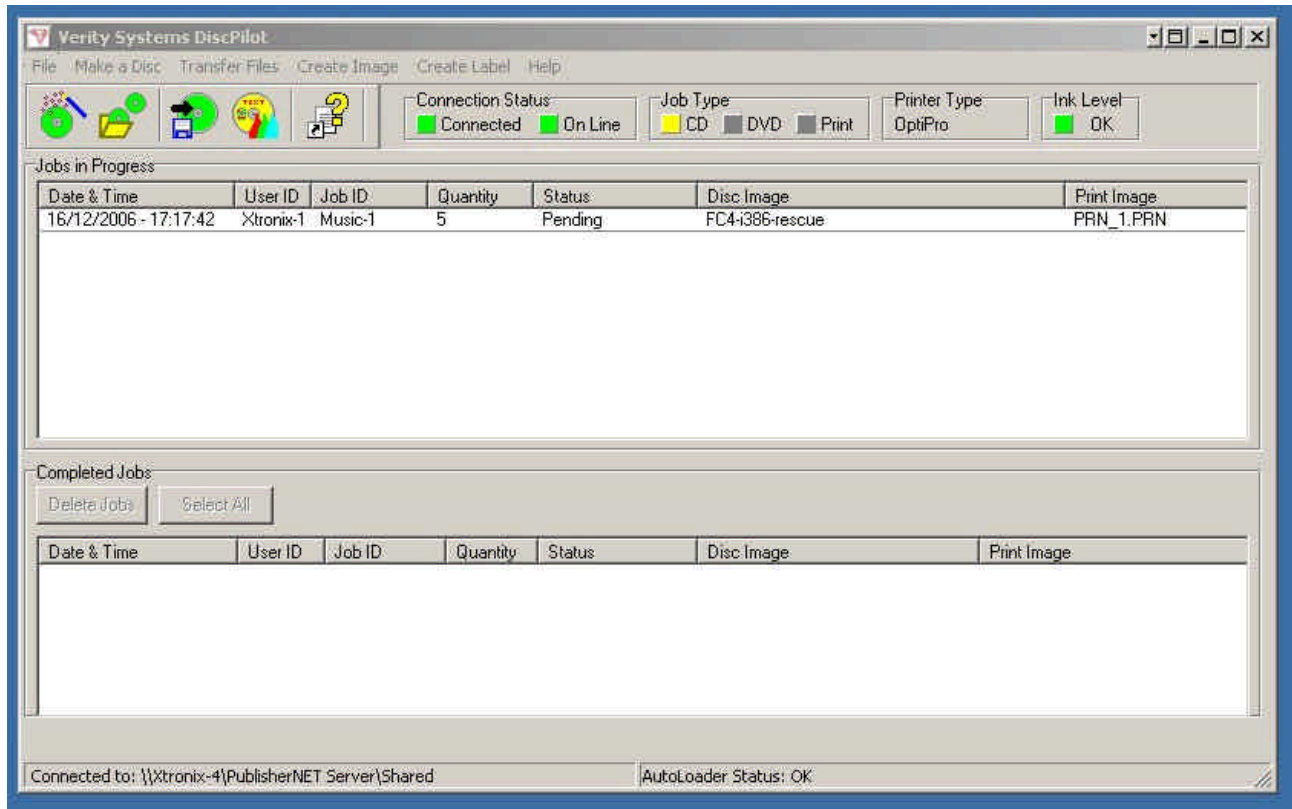
The above shows the selection of the print file “PRN_1.PRN”. Click “Next” to progress to the next level.



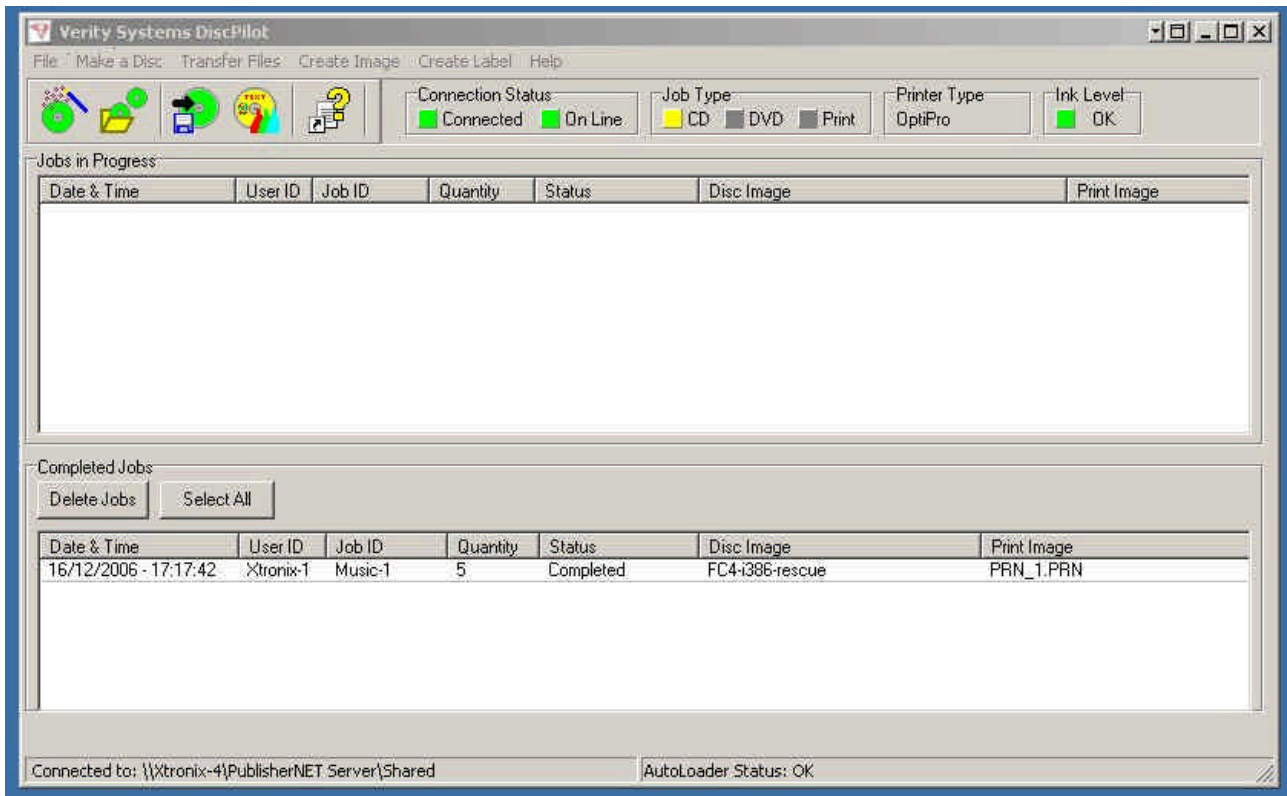
The next screen shows the selection you have made, detailing the image file and the print file chosen.

You should now enter the number of copies that are to be made and if the copies are to be verified, the “Verify after Copy” box should be ticked.

To submit the job, the “Submit Job” button should be clicked. This will cause the job to be sent to the remote CopyDisc unit.



Now that the job has been submitted it is sent to the remote CopyDisc. This may take a few minutes if large image files have to be copied over the network to the CopyDisc. When the file submission is complete, the Disc Wizard is closed and the job is shown in the “Jobs in progress” panel.

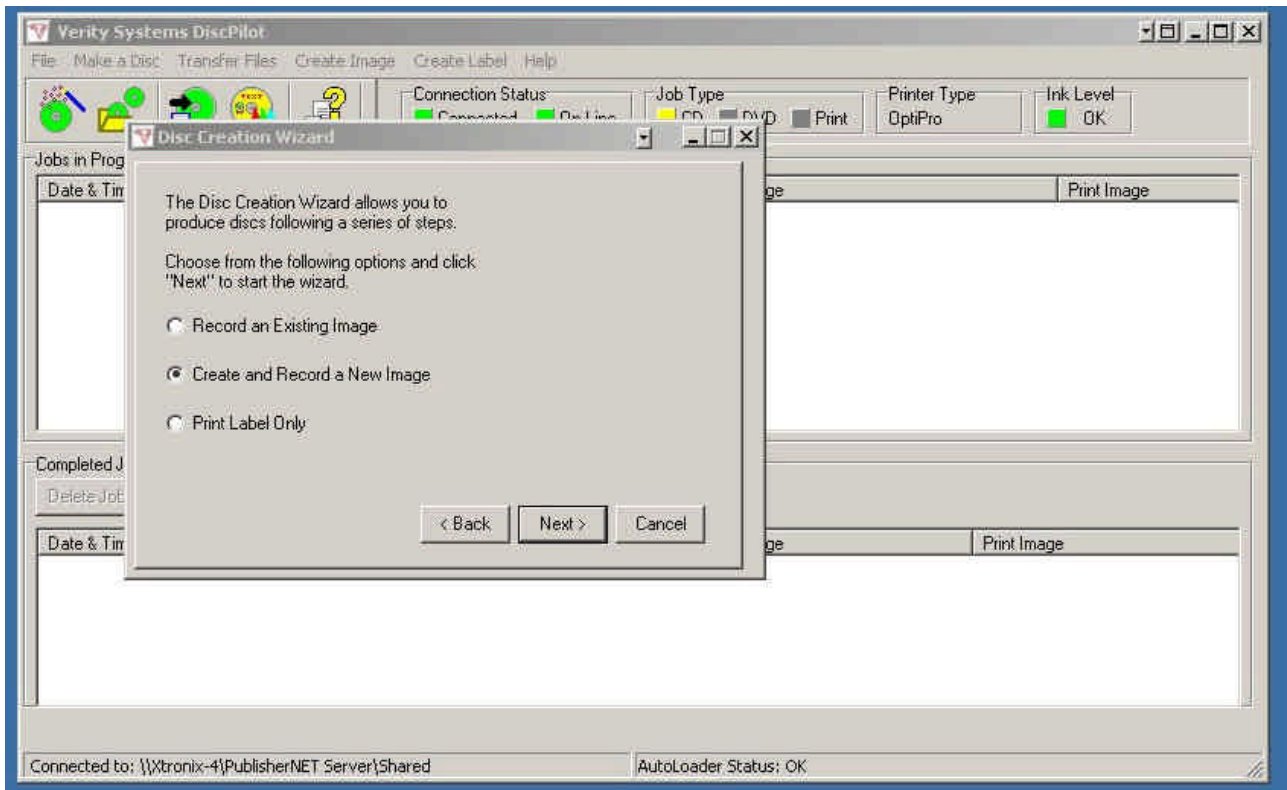


When the job is complete, the job is moved from the “Jobs in progress” panel to the “Completed Jobs” panel.

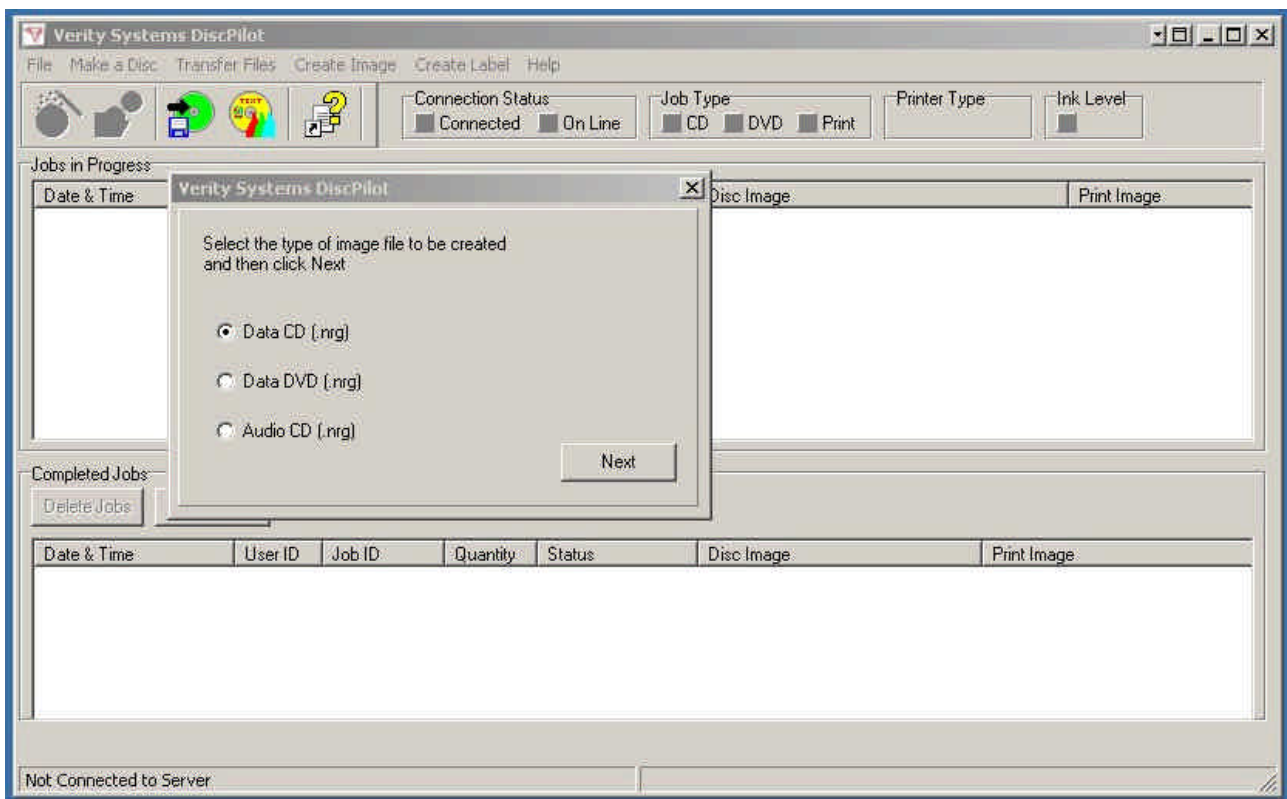
5.2 Create and Record a New Image

If you do not have an existing image you are able to create one on-the-fly by selecting this option from the “Make A Disc” wizard.

Selecting this option will launch **Nero**, a fully integrated disc image creation tool. From within DiscPilot you can create your disc images and send them as a ‘job’ and manage the files on your CopyDisc hard drive.



Chose the “Create and Record a New Image” option and then click the “Next” button.



In the first instance, select the type of image file you wish to create.

Data CD (.nrg): Select this to create a data CD.

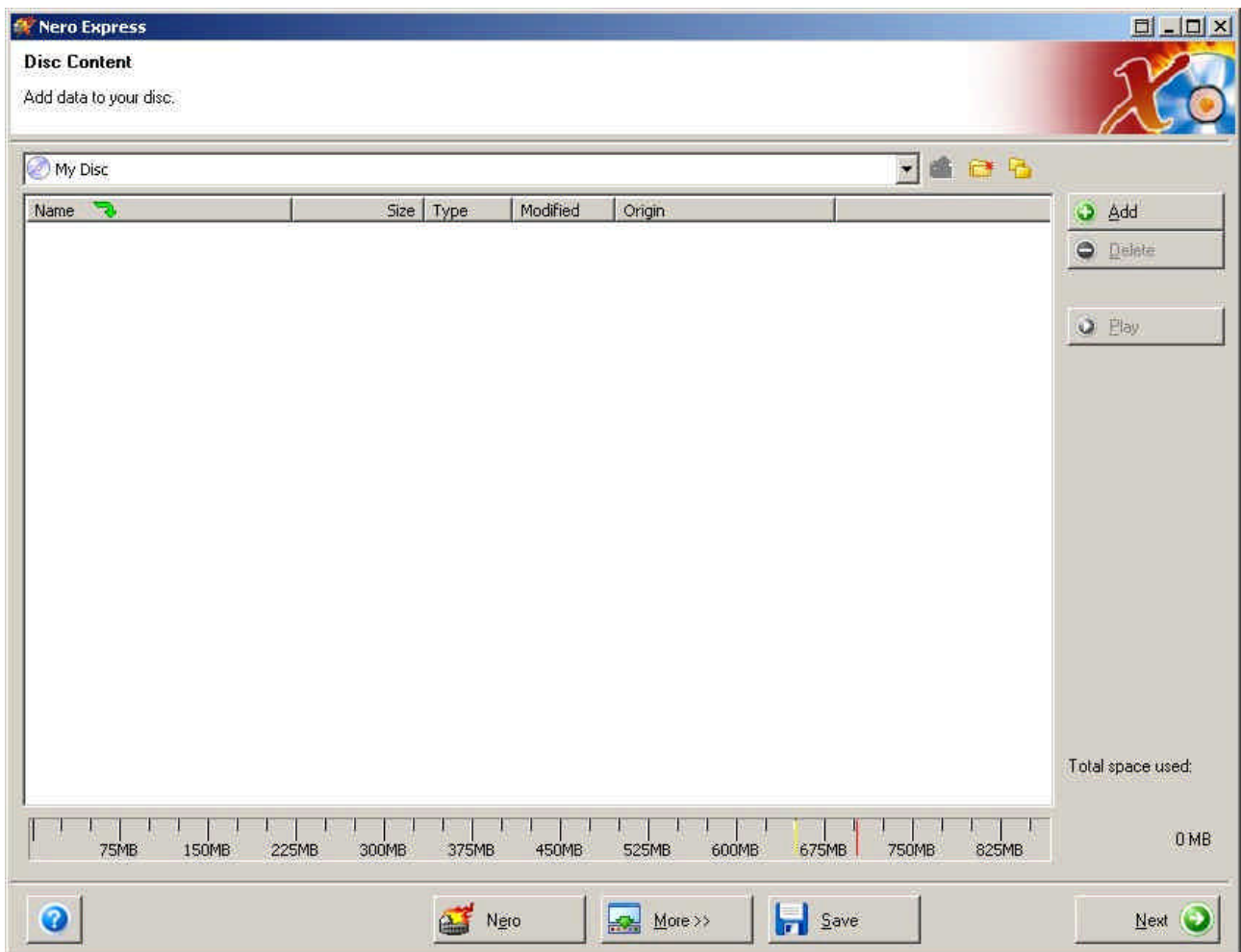
Data DVD (.nrg): Select this to create a data DVD.

Audio CD (.nrg): select this to create an Audio CD.

Select the type of image and then click the “Next” button.



Nero will then be launched.



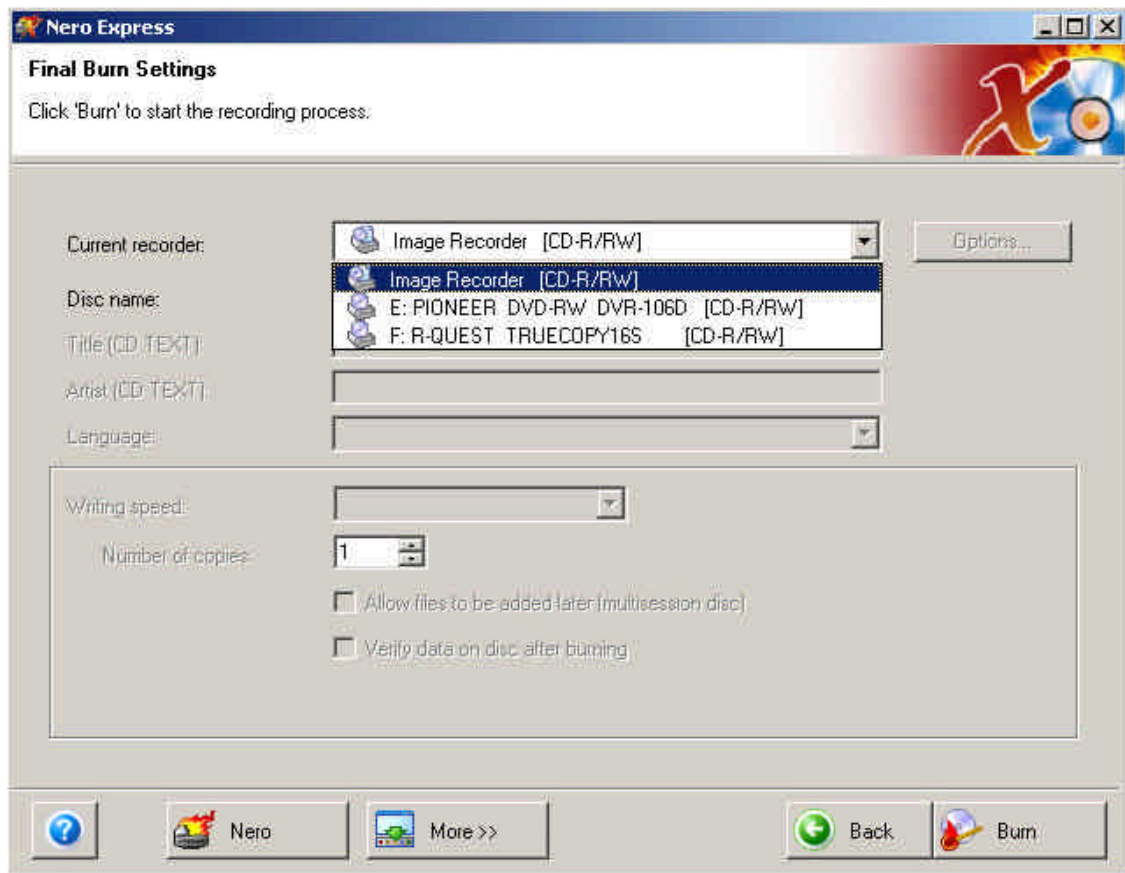
Nero can then be used to create Data or Audio images.



NOTE:

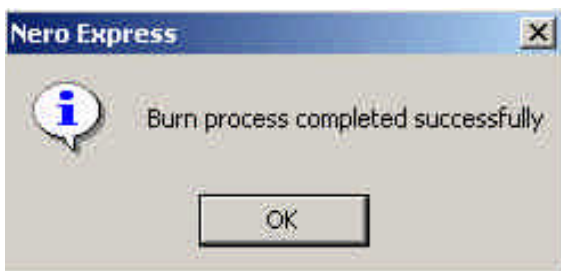
Refer to the Nero Help files for details on how to create data and Audio images.

When the image is ready to burn, instead of burning it to a CD or DVD drive, use the “Image Recorder” to make an image file.



Give the image file a unique name, file type (.nrg or .iso) and location when prompted by Nero. This name will be passed to DiscPilot when Nero is closed.

When Nero has compiled the image file, the following prompt will appear.



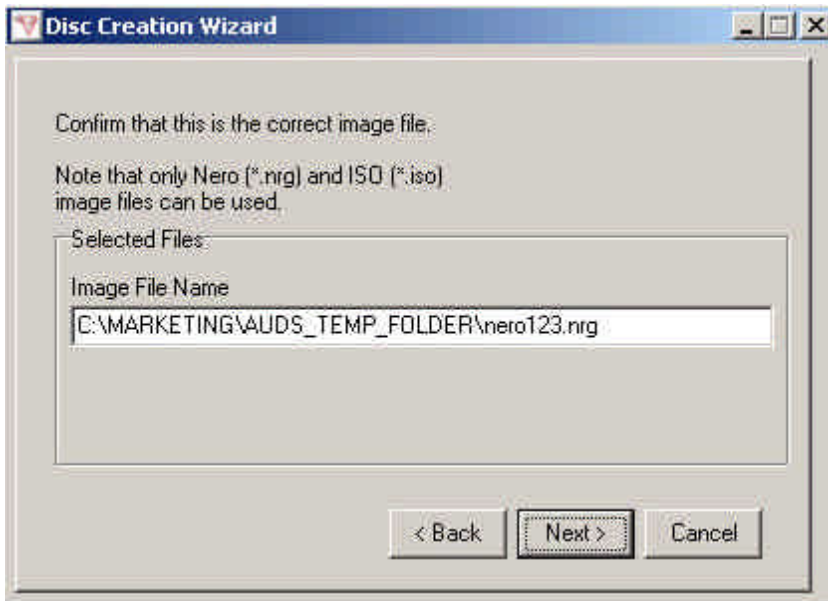
Click "OK" and then click "Next" and finally "Exit" to close down Nero and return to DiscPilot.



NOTE:

The default image type for Nero Data CDs or DVDs is the Nero format **.nrg**. It is possible to create ISO image files with Nero by selecting the ISO image format in the Nero Image Recorder "Save File" dialog.

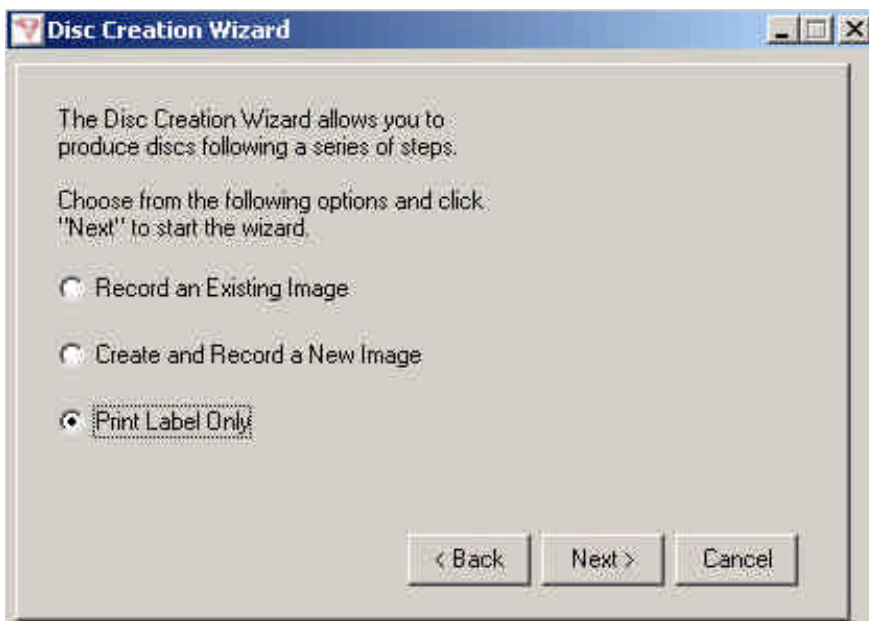
DiscPilot can accept either Nero format (.nrg) or ISO format (.iso) image files.



DisPilot will then ask you to confirm that the Image File shown is in fact the one you wish to use. Click "Next" to confirm.

5.3 Print Label Only

Selecting this option allows you to print a label without copying (burning) an image.



Select "Print Label Only" and then click "Next".



Next, choose the type of job you wish to create.

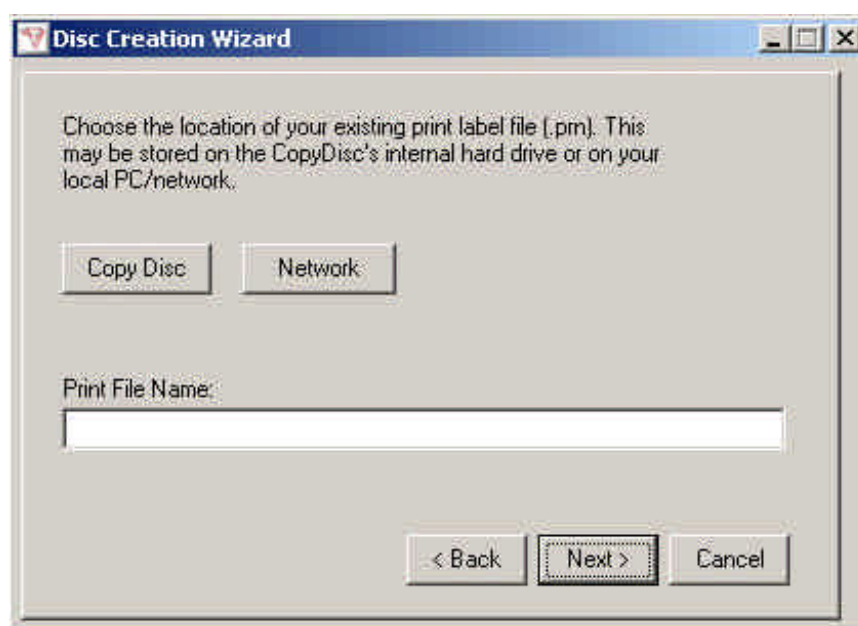
Print an Existing Label: This is a print file (.prm) stored on either the local hard disc, a network resource or on the remote CopyDisc's internal hard drive itself.

Create a New Label: This will launch **Label Designer** and allow you to create a new print file (.prm).

Once you have chosen the type of job you wish to create, click the "Next" button.

5.3.1 Printing an Existing Label

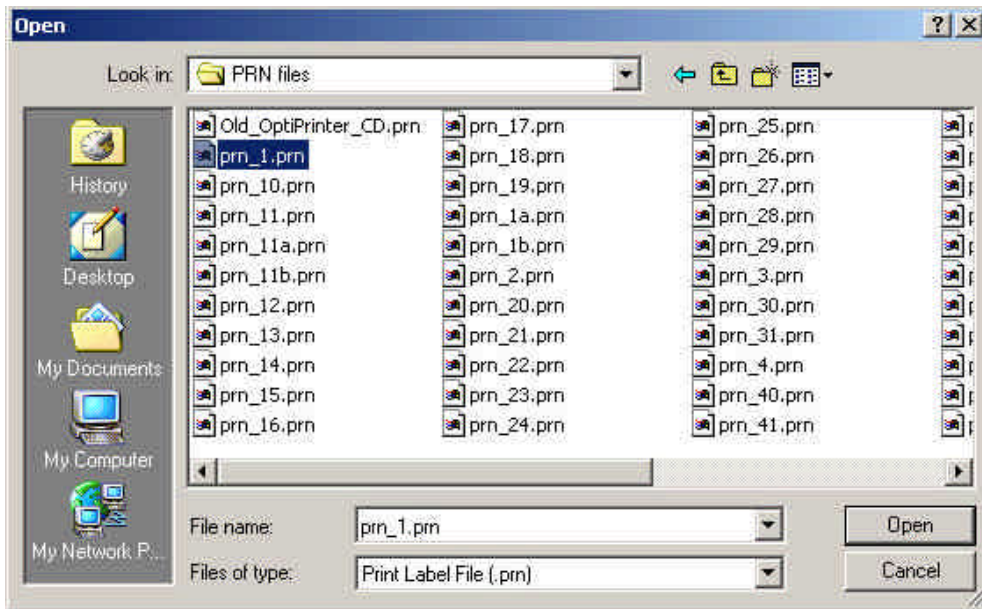
If you chose to print an existing print file (.prm), the next screen will ask you to choose the location of the file.



CopyDisc: Click this button for print files (.prn) stored on the remote CopyDisc's internal hard drive.

Network: Click on this button for print files(.prn) stored on the local PC's hard drive or stored on a network resource.

Click on the required button to select the existing image file.

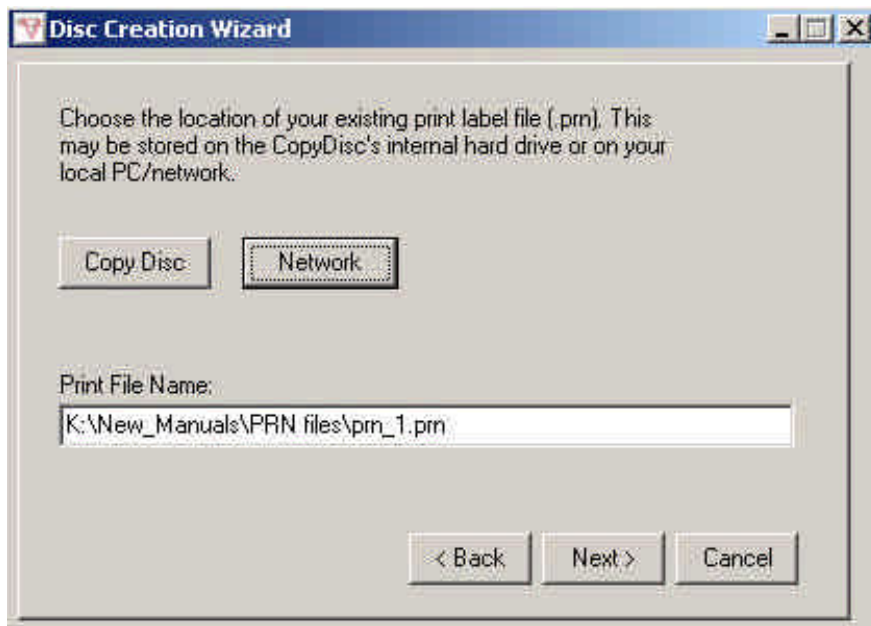


Choose the required print file from those listed. The above example shows print files stored on network folder. Click on the required file to highlight it and then click the “Open” button.



NOTE:

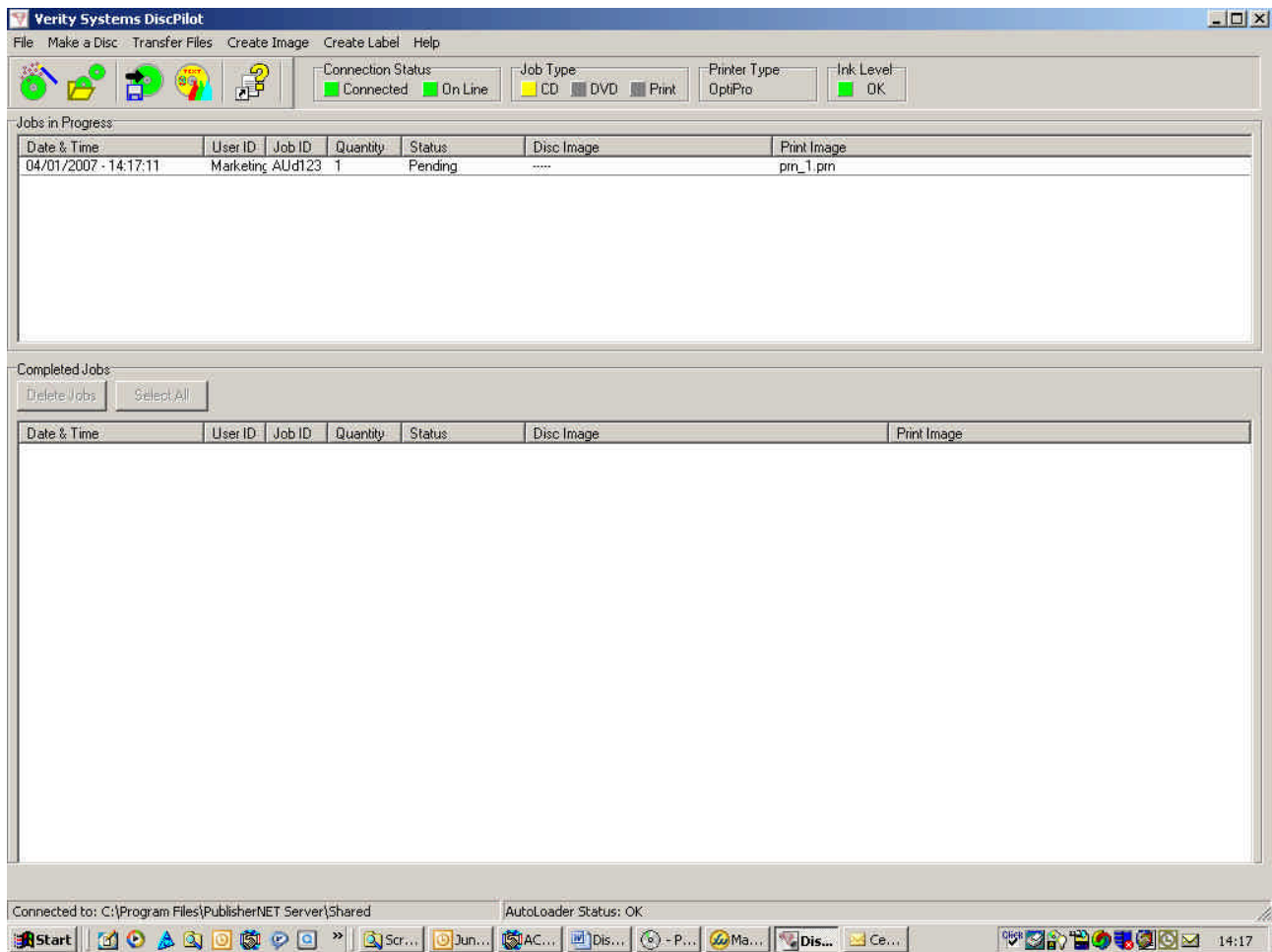
Be sure that you select a print file(.prn) that has been created using the appropriate print driver for the printer in use. If the CopyDisc is fitted with an OptiPrinter pro inkjet printer, ensure that the print file (.prn) you select has been created using the OptiPrinter Pro print driver.



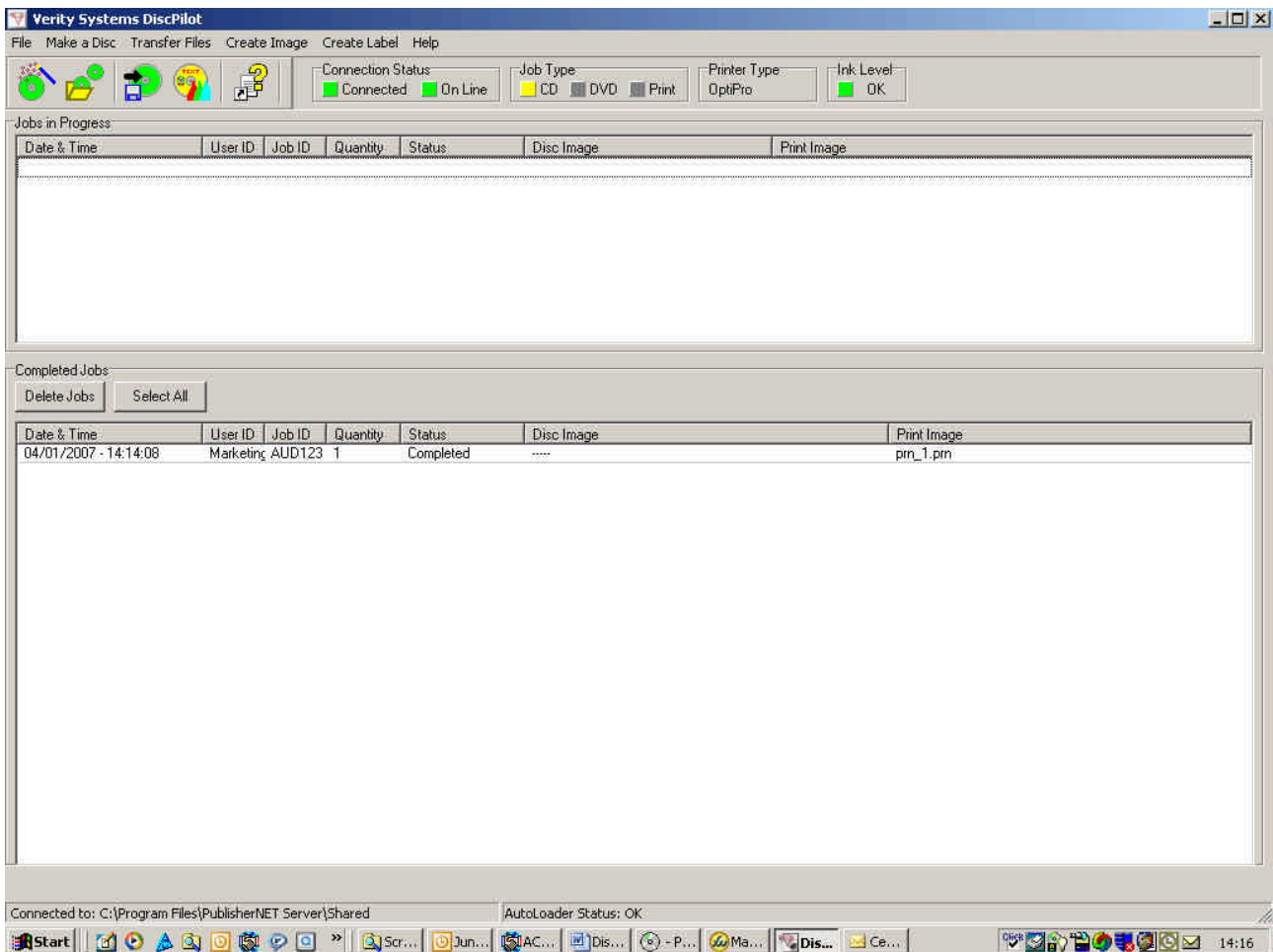
The above shows the selection of the print file. Click on “Next”.

You should now enter the number of copies that are to be made.

To submit the job, the “Submit Job” button should be clicked. This will cause the job to be sent to the remote CopyDisc unit.



Now that the job has been submitted it is sent to the remote CopyDisc. When the file submission is complete, the Disc Wizard is closed and the job is shown in the “Jobs in progress” panel.

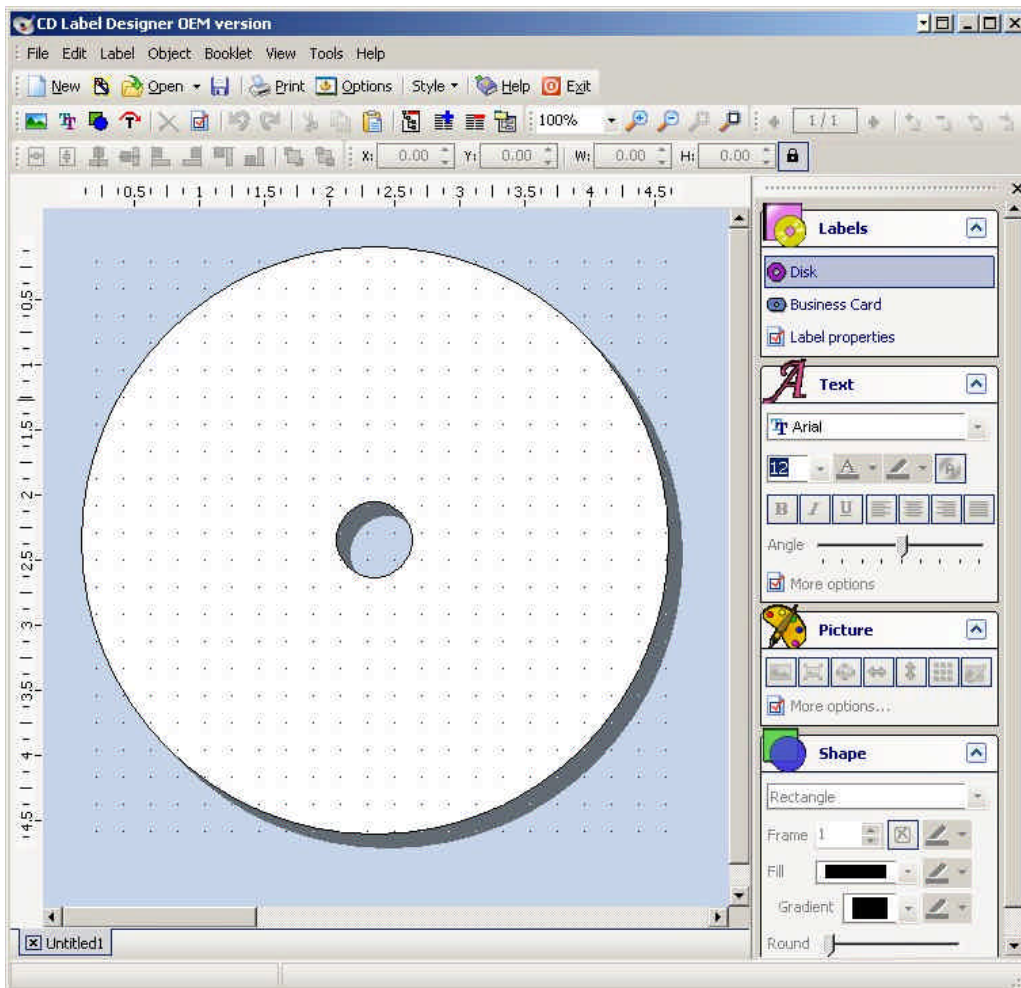


When the job is complete, the job is automatically moved from the “Jobs in progress” panel to the “Completed Jobs” panel.

5.3.2 Create a New Label

Selecting “Create a new label” and then clicking “Next” will launch the CD Label Designer software.





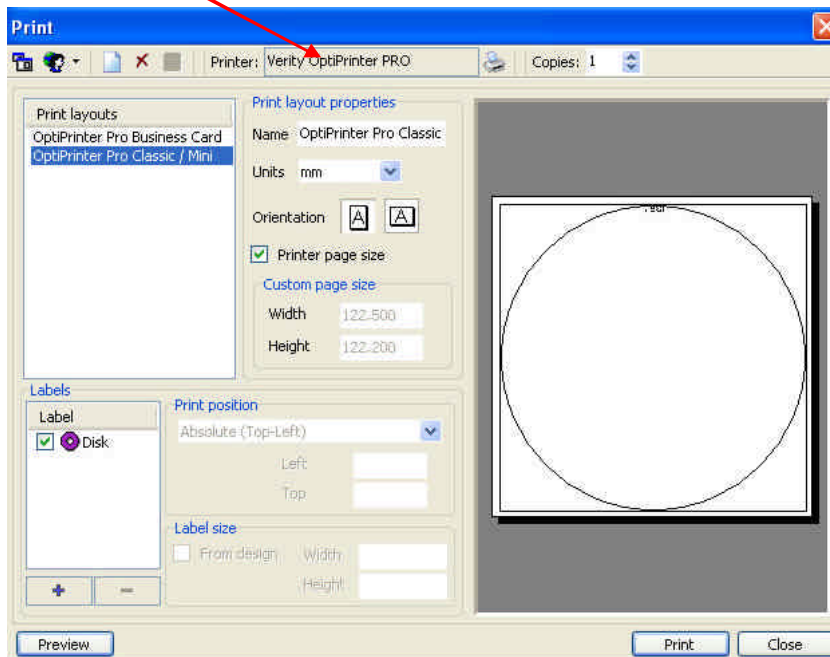
The CD Label Designer can be used to create print files - .prn(s).



NOTE:

Refer to the CD label Designer Help files for details on how to design and create disc labels.

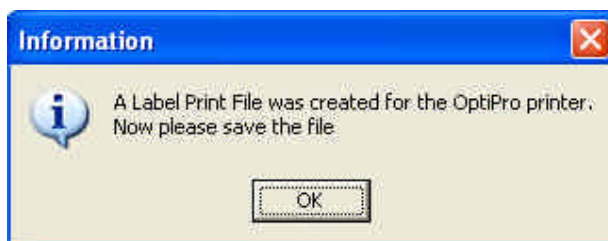
When printing the label file, ensure that the correct printer type for the CopyDisc is selected.



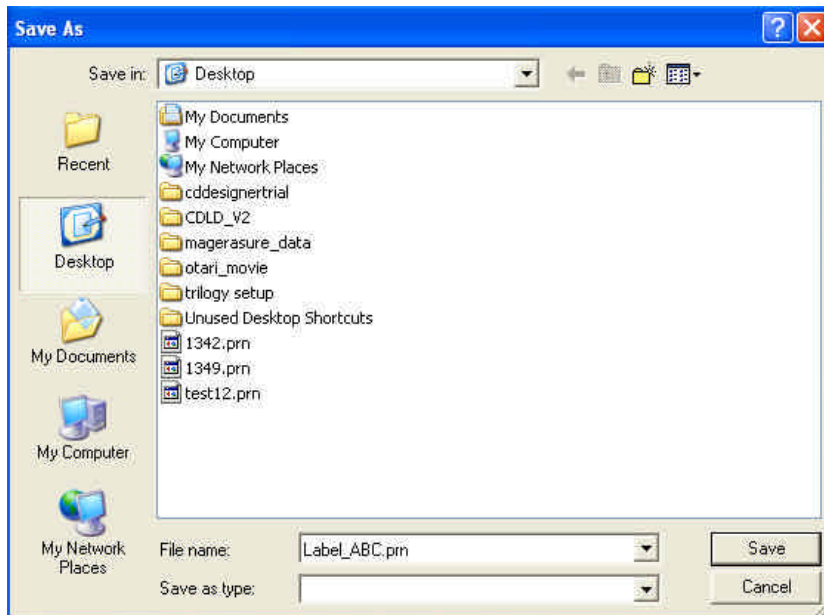
When CD Label Designer is closed, the user will be given the opportunity to name and save the label file that was created.

At this stage CD label Designer is giving you the opportunity to save the image you have just created as a CD Label Designer file (.cld). **DiscPilot only works with .prn files** and you will be given the opportunity to create a .prn file of the image you have created when you exist CD Label Designer completely. You can however choose to save the .cld file at this stage as it allows you to open the file at a later stage to amend, should you wish.

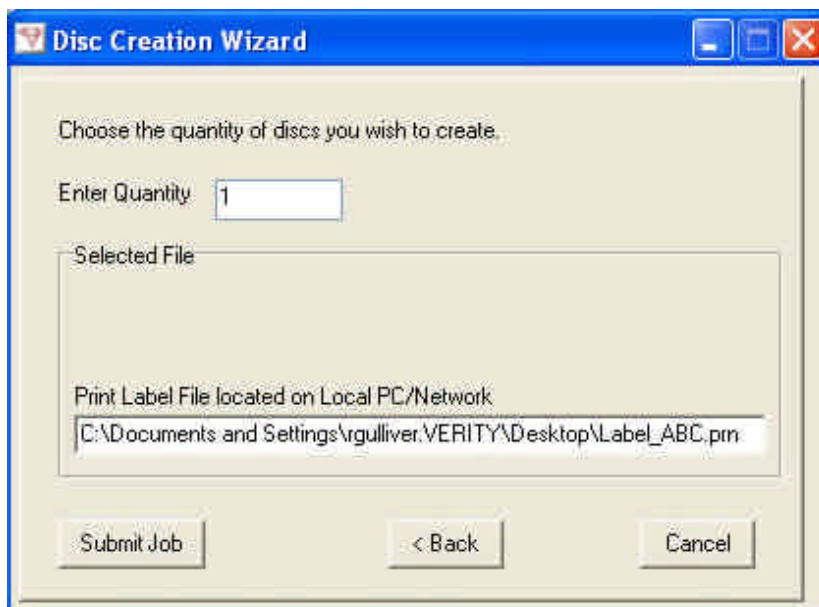
When you close the CD Label Designer program completely, you will return automatically to DiscPilot. The following prompt will appear asking you to save the label print file you have just created as a .prn file.



Choose a location to save the print file.



Click “Save”.



The above shows the selection of the print file.

You should now enter the number of copies that are to be made.

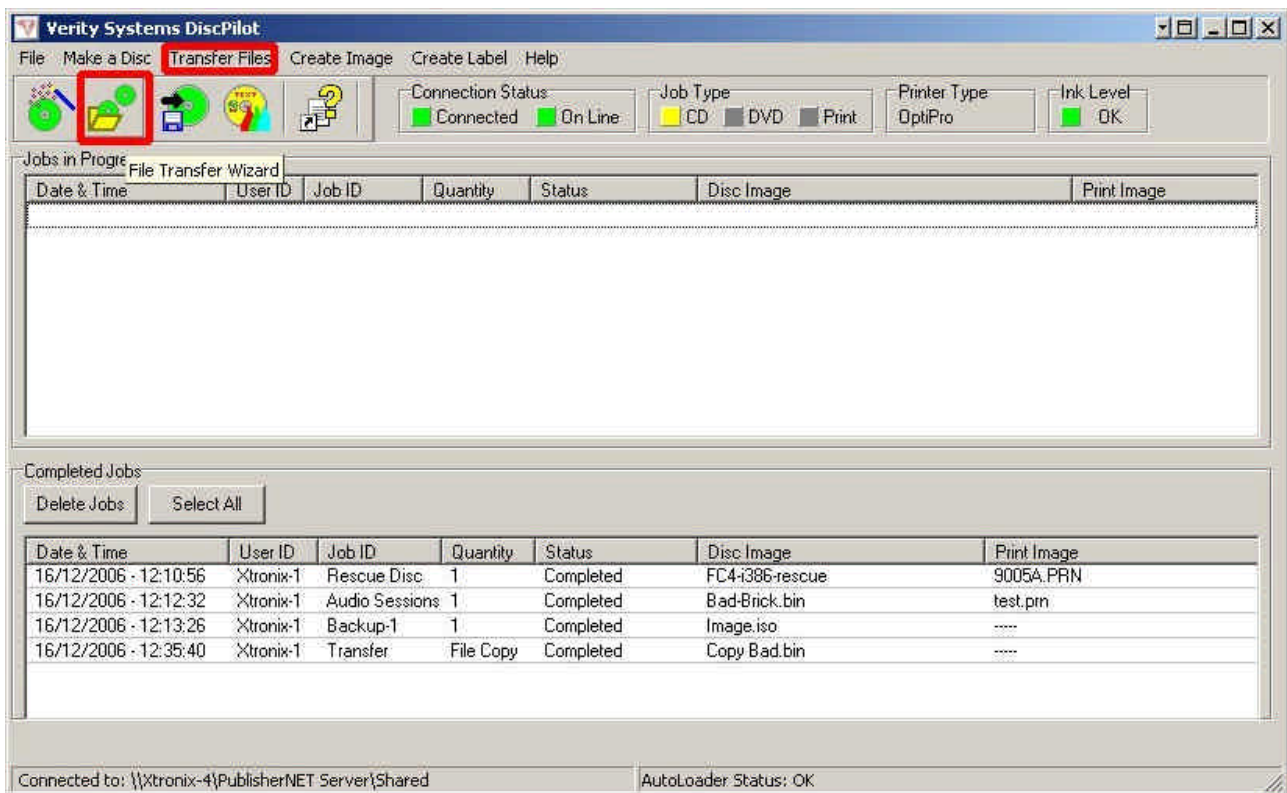
To submit the job, the “Submit Job” button should be clicked. This will cause the job to be sent to the remote CopyDisc unit.

Now that the job has been submitted it is sent to the remote CopyDisc. When the file submission is complete, the Disc Wizard is closed and the job is shown in the “Jobs in progress” panel.

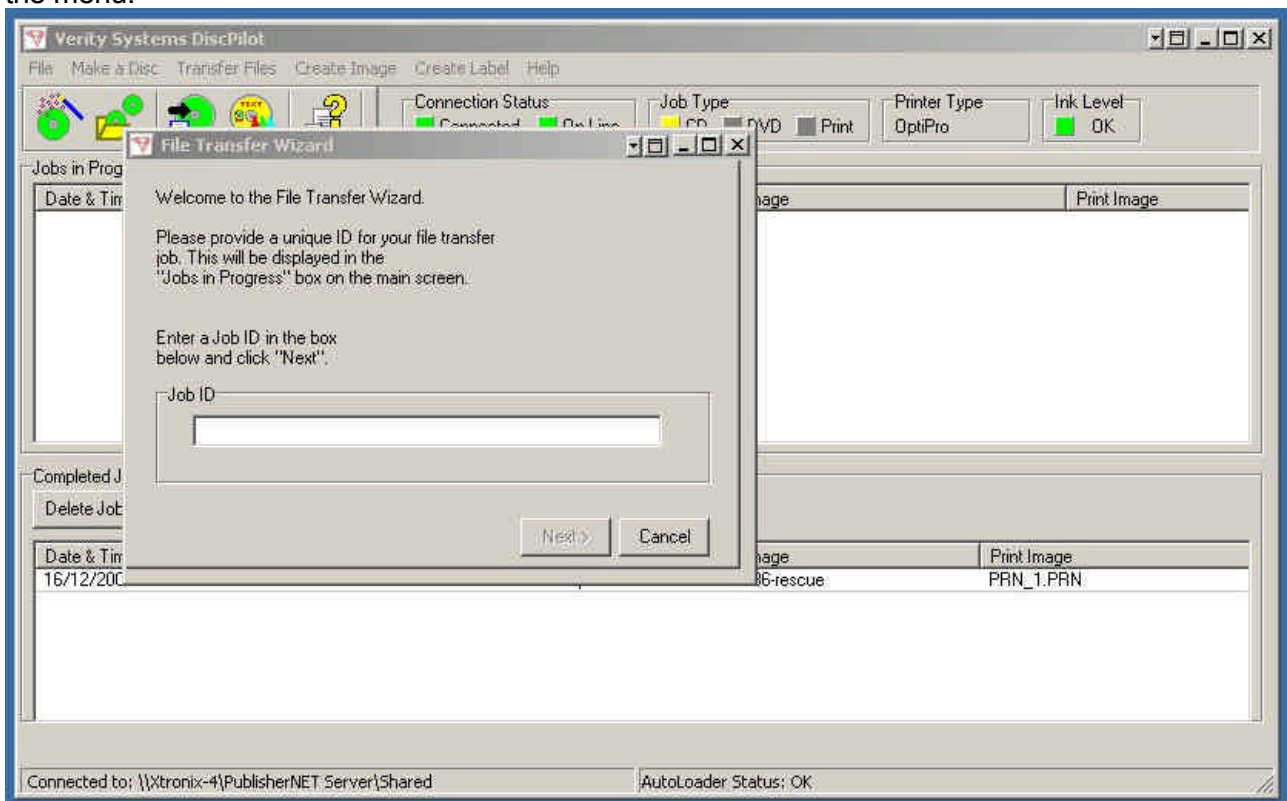
When the job is complete, the job is moved from the “Jobs in progress” panel to the “Completed Jobs” panel.

5.5 Transfer Files

The File Transfer Wizard allows the user to transfer (copy) image and print files to the remote CopyDisc's internal hard drive.

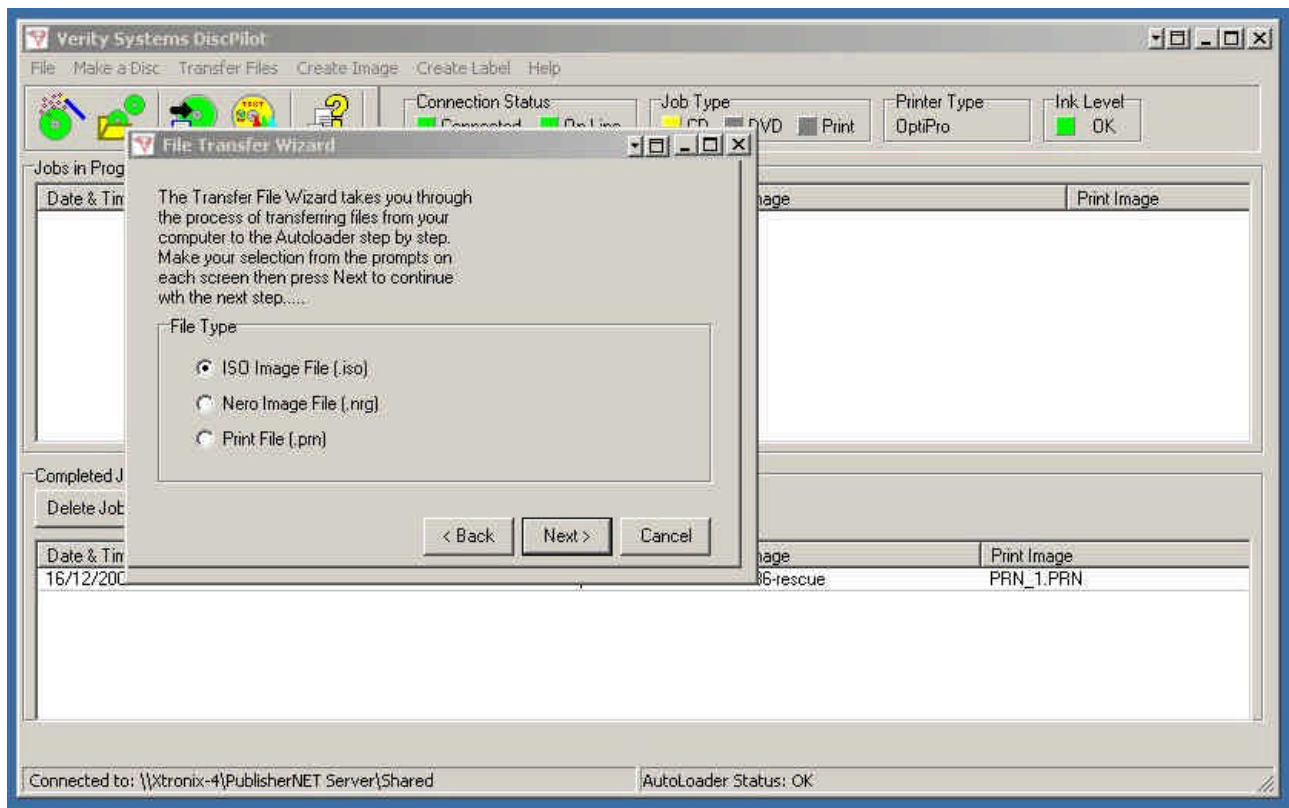


To start the file Transfer Wizard, click on the File Transfer Wizard icon or select Transfer Files from the menu.



Give your transfer job an ID. All jobs submitted must have a unique ID. The ID must not be the same as any other jobs already present on the “Jobs In Progress” panel.

Enter the Job ID and click the “Next” button.



Choose the type of transfer job.

ISO Image File (.iso): Select this to copy an ISO Data image file to the remote CopyDisc’s internal hard drive.

Nero Image File (.nrg): Select this to copy an Nero Data image file or a Nero Audio Image file to the remote CopyDisc’s internal hard drive.

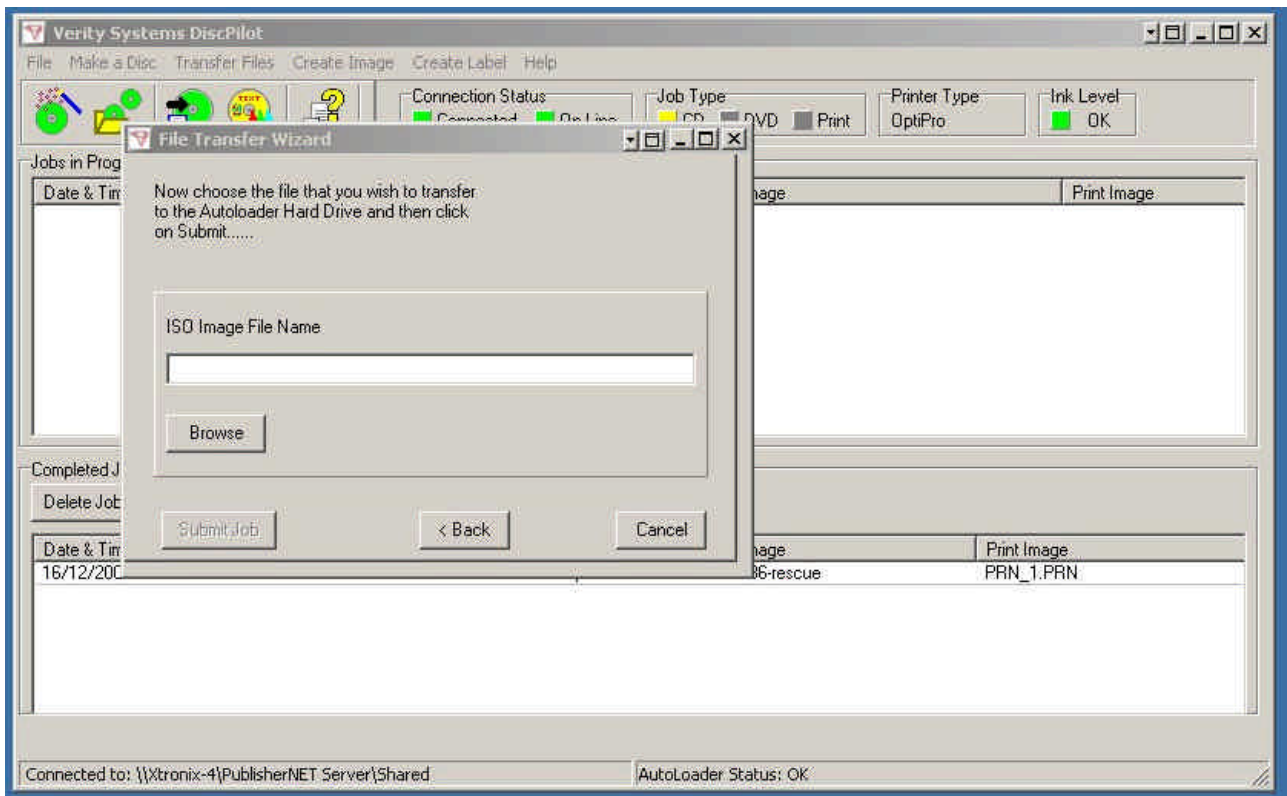
Print File(.prn): Select this to copy a Print File to the remote CopyDisc’s internal hard drive.



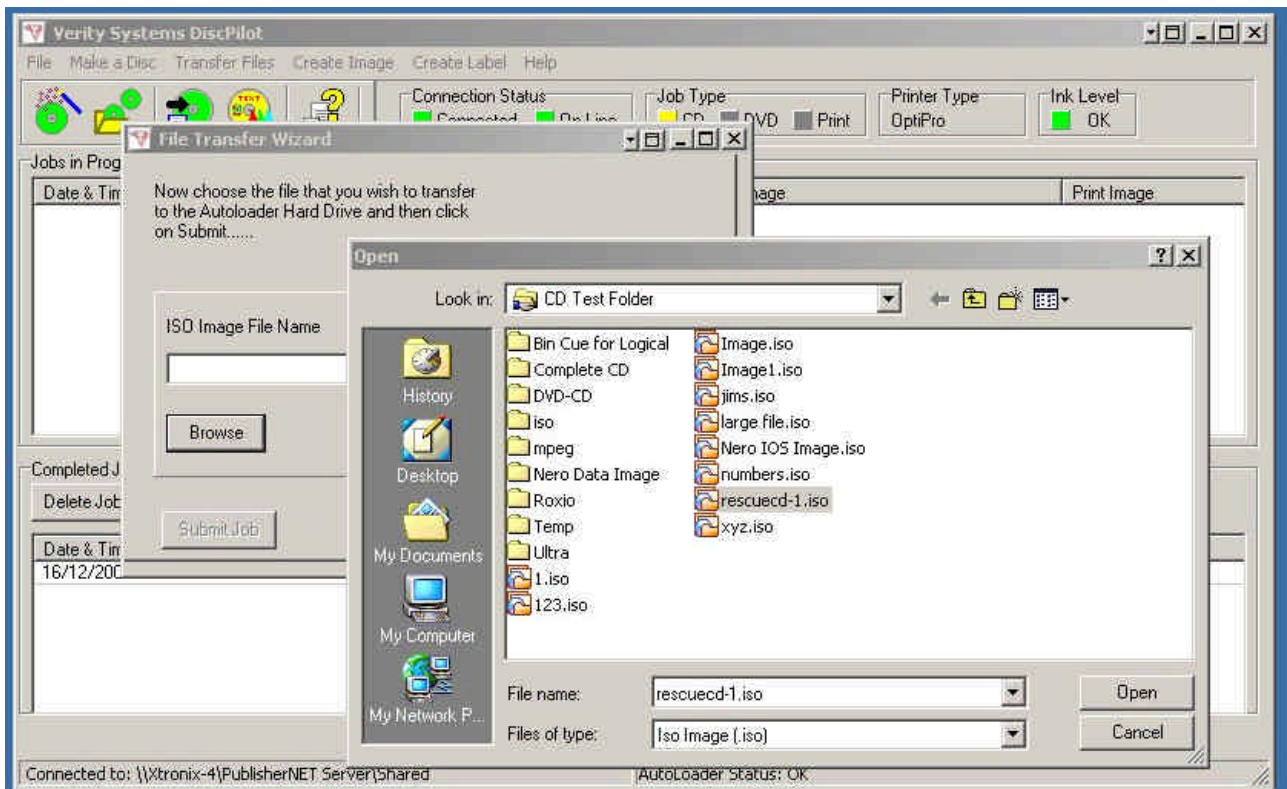
NOTE:

1. When Nero Data Image file is copied to the remote CopyDisc’s hard drive, it is converted and renamed to an ISO file (e.g. Image.nrg becomes Image.iso)
2. When a nero Audio Image file is copied to the remote CopyDisc’s hard drive, it is converted to a Bin and CUE file (e.g. Image.nrg becomes Image bin and cue.bin. Only the Image bin file will appear in the remote CopyDisc’s file list, but the associated .cue file is also stored.
3. When copying print files, it is important to ensure that the print file is of the correct format for the printer type connected to the remote CopyDisc.

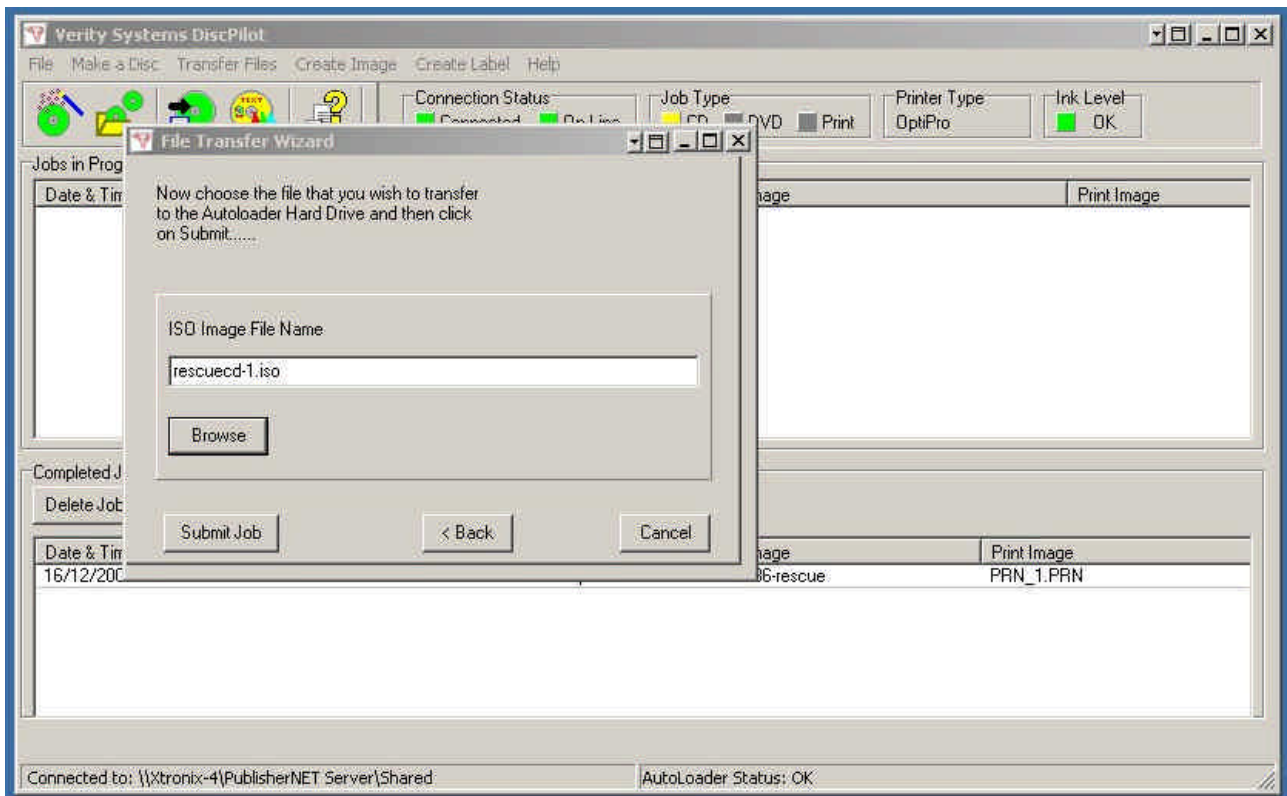
4. File names must not be longer than 14 characters, this includes the extension (e.g. 1234567890.123)



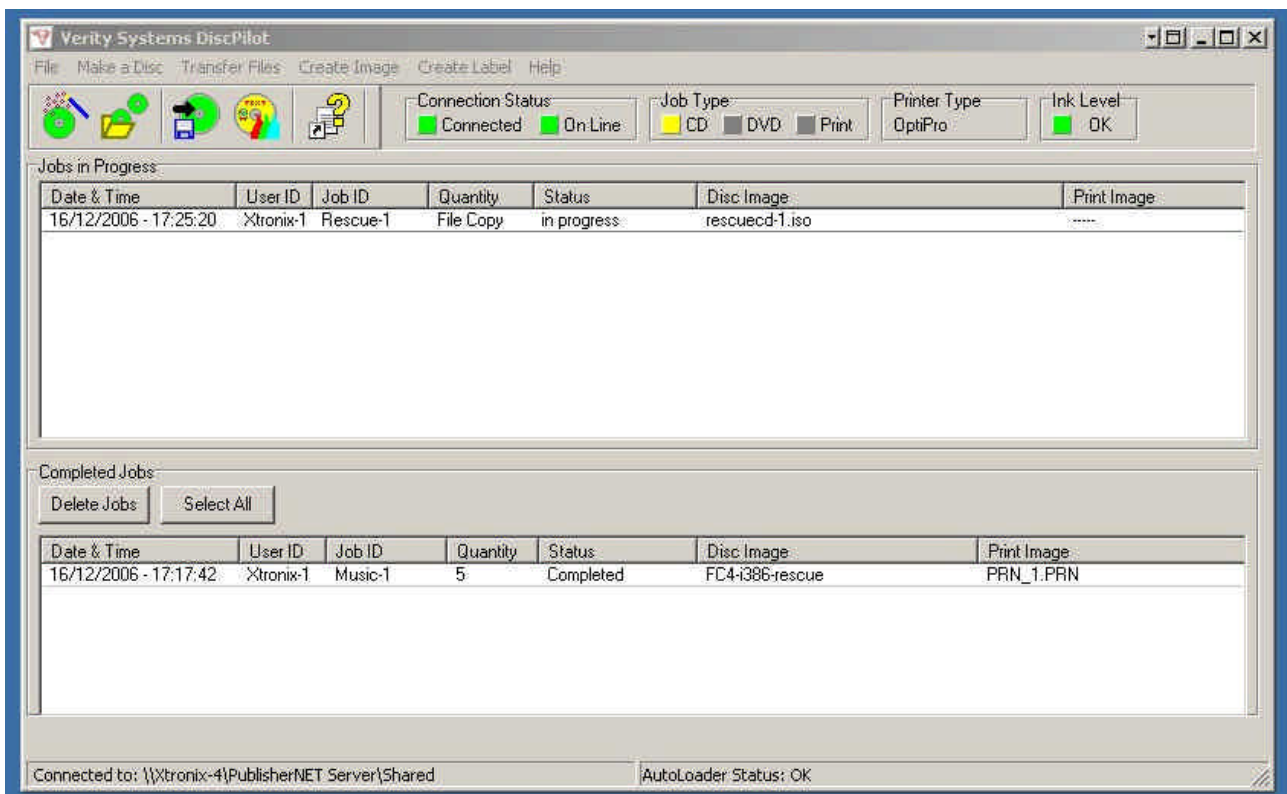
Browse for an image file. The image file can be stored on the local PC's hard drive or on a network resource. Click the "Browse" button to search for the image.



Choose the required image. The above example shows ISO Data image files stored on the local PC 's drive. Click on the required file to highlight it and then click the "Open" button.



The above screen shows the selection of the image file. Click the "Submit Job" button. This will cause the job to be sent to the remote CopyDisc.

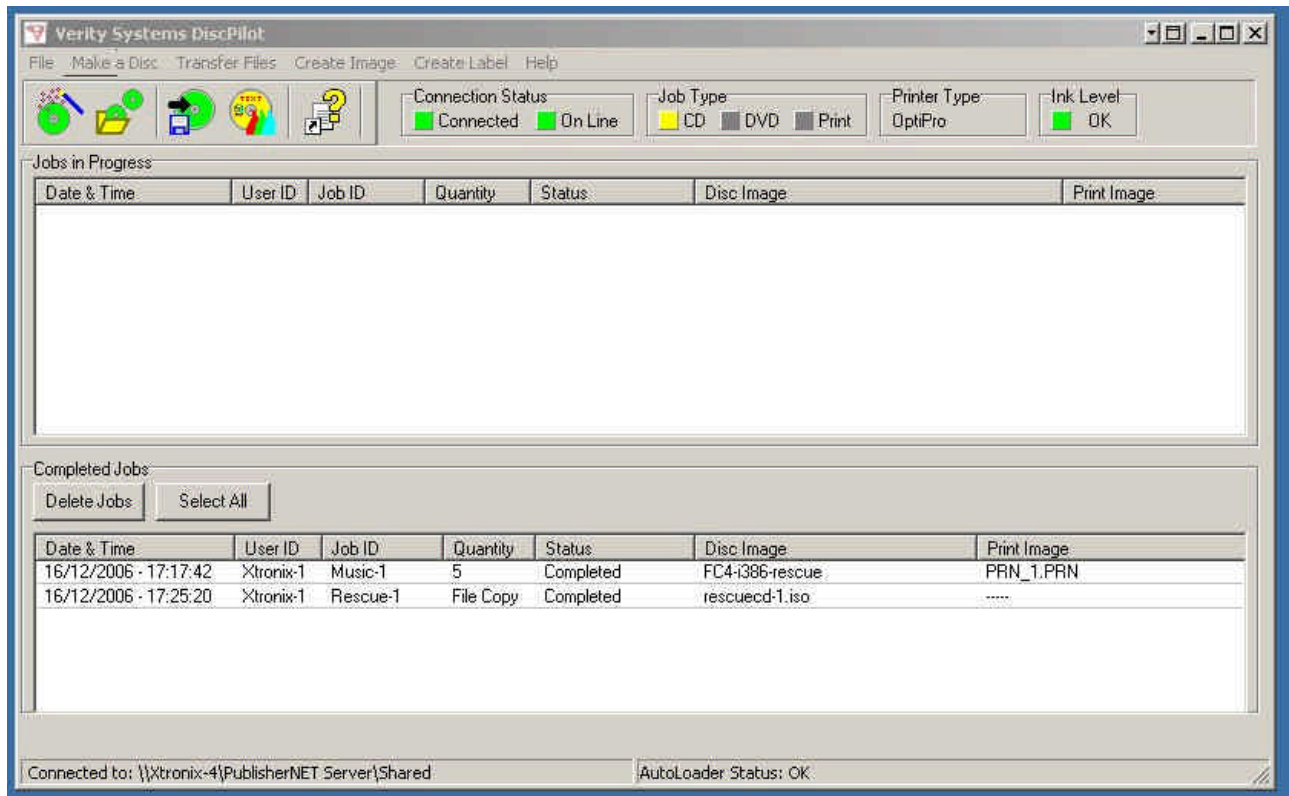


Now that the job has been submitted, the job is sent to the CopyDisc. This maytake a few minutes if large image files have to be copied over the network to the remote CopyDisc. When the file submission is complete, the Disc Wizard is closed and the job is shown in the “Jobs in Progress” panel.



NOTE:

The “Quantity” entry has “File Copy” rather than a numeric quantity.



When the job is completed, the job is moved from the “Jos in progress” panel to the “Completed Jobs” panel.

5.5 Create Image

It is possible to create an image file without using the Disc Wizard as referred to in section 5.2. To create an image file, click on the “Create an Image File” icon or on the “Create Image” menu item. This will launch Nero and allow you to create a new data or audio image file.

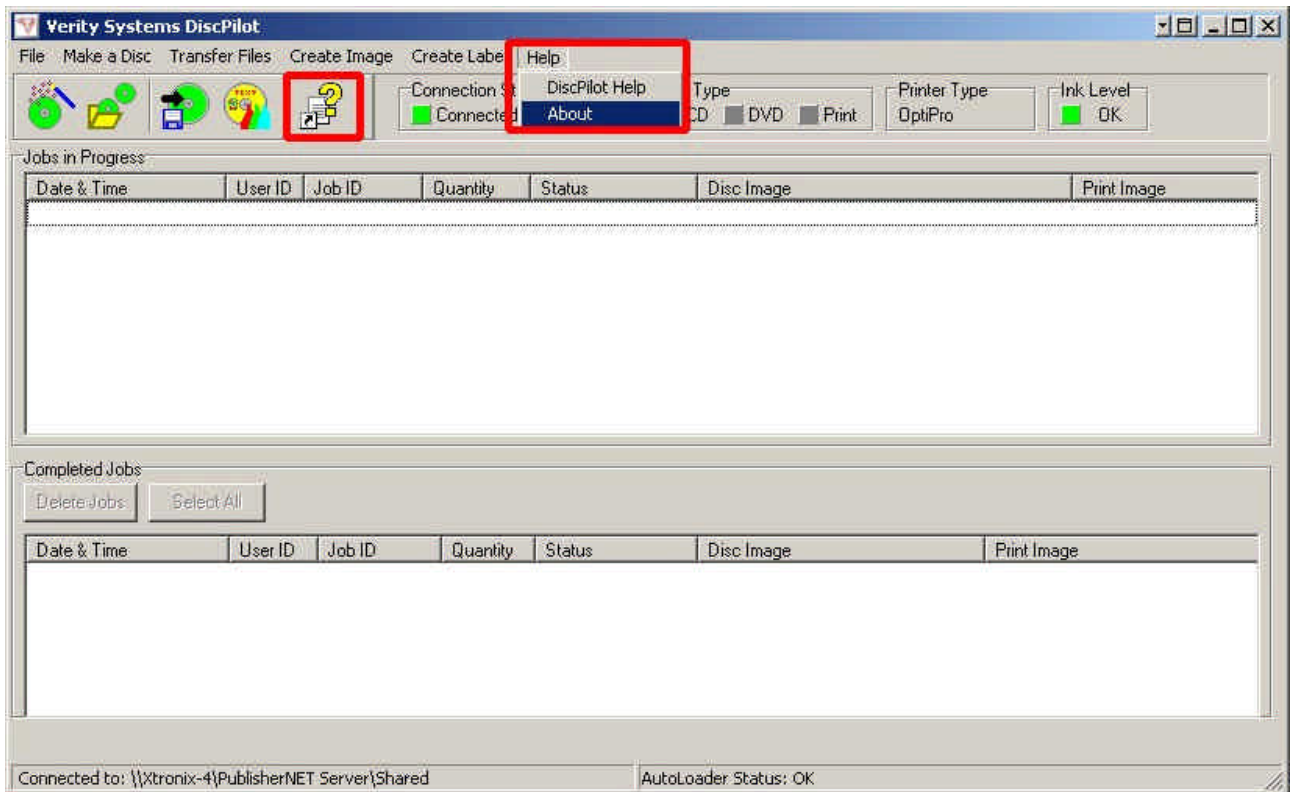
5.6 Create Label

It is possible to create a label print file (.prn) without using the Disc Wizard as referred to in section 5.3. To create a label print file, click on the “Create a Label File” icon or on the “Create Label” menu item. This will launch CD label Designer and allow you to create a label print file.

5.7 Help

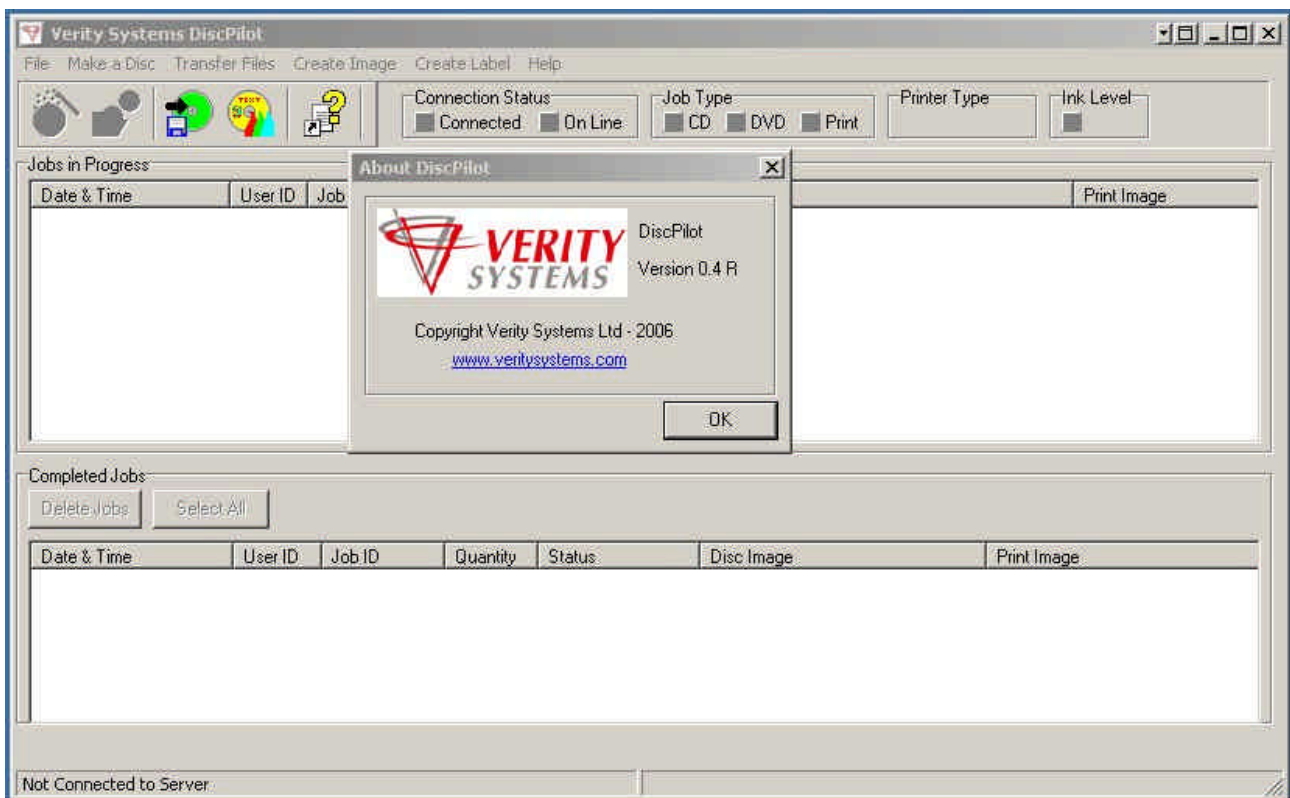
5.7.1 Disc Pilot Help

Selecting “DiscPilot Help” from the menu displays the help file.



5.7.2 About

Selecting “About” from the menu shows the About box. The About box shows the version level of the software.



Supplied by:

Verity Systems Ltd.

2 Eastern Road
Aldershot
Hampshire
GU12 4TD
United Kingdom

Tel: +44 (0) 1252 317000

Fax: +44 (0) 1252 316555

E-mail: sales@veritysystems.com

Verity Systems, Inc.

5441 Merchant Circle, Unit A
Placerville
CA 95667
United States
Toll Free: (800) 642-5151

Tel: (530) 626-9363

Fax: (530) 626-9395

E-mail: ussales@veritysystems.com

<http://www.veritysystems.com>