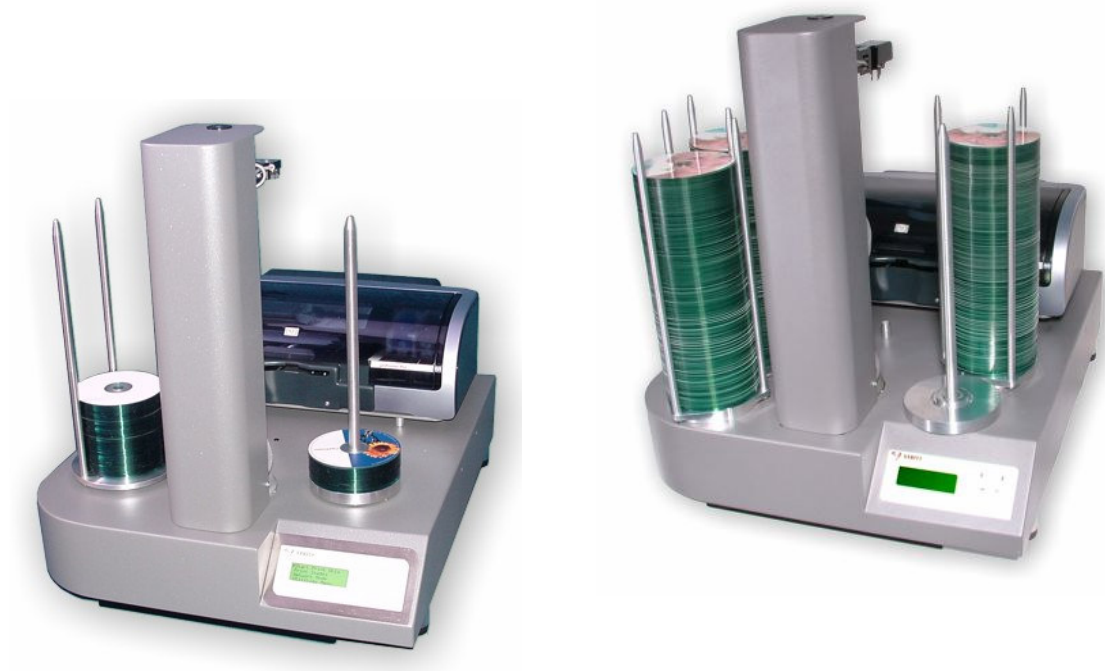




COMPLETE SOLUTIONS FOR ON-DEMAND CD and DVD PRODUCTION



CopyDisc Platinum Series



Automated CD & DVD Standalone Printer Series

OPERATING and MAINTENANCE MANUAL

Thank you for purchasing a Verity Systems CopyDisc Series Duplicator **OPERATING and MAINTENANCE MANUAL**

Document Reference No. TP 000 259 (Ver 1.02)
Production Standard

ZZ 540 090 + ZZ 500 301	CopyDisc AutoPrinter Platinum
ZZ 440 090 + ZZ 500 302	CopyDisc OptiPrinter Pro Platinum
ZZ 504 090 + ZZ 500 305	CopyDisc P-55 Platinum
ZZ 530 090 + ZZ 500 201	CopyDisc AutoPrinter XC Platinum
ZZ 430 090 + ZZ 500 202	CopyDisc OptiPrinter Pro XC Platinum
ZZ 530 090 + ZZ 500 205	CopyDisc P-55 XC Platinum

VERITY SYSTEMS LTD

2 Eastern Road
Aldershot
Hampshire
GU12 4TD
United Kingdom

Tel: +44 (0) 1252 317000
Fax: +44 (0) 1252 316555
Email: sales@veritysystems.com

VERITY SYSTEMS, INC.

5441 Merchant Circle, Unit A
Placerville
California
95667
United States

Tel: (530) 626-9363
Fax: (530) 626-9395
Email: ussales@veritysystems.com

www.veritysystems.com

**WARNING**

To avoid electrical shock hazards, unit covers should only be removed by authorised personnel.

**COPYRIGHT**

This document is the property of Verity Systems and it may not be reproduced, copied or exhibited to a third party without the written permission of Verity Systems.

**ENVIRONMENTAL PROTECTION**

Waste electrical products should not be thrown away with household waste. Please recycle where facilities exist. Check with your local authority or retailer for recycling advice.

Verity Systems reserves the right to amend or modify the specifications and design criteria applying to these products.

SOFTWARE WARRANTY (LIMITED)

If you discover physical defects in the media on which the software is distributed or in the User's Manual, *Verity Systems* will replace the media or manual for a period of ninety (90) days after the purchase by the retail customer. You must return the disk or manual to *Verity Systems* or an authorized *Verity Systems* dealer within the warranty period accompanied by proof of purchase.

VERITY SYSTEMS DISCLAIMS ALL IMPLIED WARRANTIES ON THE PRODUCT, INCLUDING WITHOUT LIMITATION WARRANTIES OF MERCHANTABILITY, PERFORMANCE AND FITNESS FOR A PARTICULAR PURPOSE. *Verity Systems* WILL NOT BE LIABLE FOR ANY BUG, ERROR, OMISSION, DEFECT, DEFICIENCY, OR NONCONFORMITY IN ANY SOFTWARE. **AS A RESULT, THE SOFTWARE IS SOLD "AS IS", AND THE PURCHASER ASSUMES THE ENTIRE RISK AS TO ITS QUALITY AND PERFORMANCE.**

VERITY SYSTEMS SHALL IN NO EVENT BE LIABLE FOR DIRECT, INDIRECT, SPECIAL, INCIDENTAL, CONTINGENT OR CONSEQUENTIAL DAMAGES RESULTING FROM ANY DEFECT IN THE SOFTWARE OR ITS DOCUMENTATION INCLUDING DAMAGES FROM LOSS OF DATA, EVEN IF VERITY SYSTEMS OR AN AUTHORIZED VERITY SYSTEMS DEALER HAS BEEN ADVISED OF THE POSSIBILITY OF SUCH DAMAGES. YOU AGREE THAT VERITY SYSTEMS' LIABILITY, ARISING OUT OF CONTRACT, NEGLIGENCE, STRICT LIABILITY IN TORT OR WARRANTY SHALL NOT EXCEED ANY AMOUNTS PAID BY YOU FOR THIS PRODUCT.

Any written or oral information or advice given by Verity Systems dealers, distributors, agents or employees will in no way increase the scope of this warranty. Nor may you rely on such oral or written communication. Some states do not allow the exclusion or limitation of implied warranties or liability for incidental or consequential damages, so the above limitation or exclusion may not apply to you. This warranty gives you specific legal rights, and you may also have other rights that vary from state to state.

RECOMMENDED MEDIA

The type and quality of the blank media is one of the most important factors concerning the duplication and printing quality. The better the quality of media you use the better the duplication and printing results will be. Buying brand-name media will almost always result in more reliable and consistent duplication and printing results.

For the best recording results in any CD/DVD recordable environment, be sure to use superior CD-R or DVD-R media from **Taiyo Yuden**.

Taiyo Yuden is the leader in CD-R and DVD-R manufacturing. In today's high volume CD/DVD recordable environments, users need the assurance that their choice of media will provide high performance, compatibility and long term data integrity. Taiyo Yuden's long history of development and manufacturing, combined with their zero tolerance for sub-standard products, makes their media the best choice for your requirements.

Used by professionals for mastering around the world, Japanese-made Taiyo Yuden is made by the inventor of the CD-R disc. All Taiyo Yuden media is manufactured in a single plant and on the same machine, ensuring unparalleled consistency and quality like no other brand. Taiyo Yuden has the widest play back compatibility, the lowest error rates in recording, and comes with a 100-year data integrity guarantee. Taiyo Yuden media is available with lacquer, thermal printable, white and silver inkjet-printable, and hub printable surfaces.

Verity Systems recommends Taiyo Yuden media for use in all of their DVD and CD duplicators and printers.

Features:

- Certified grade A media, genuine Taiyo Yuden
- Compatibility with all CD/DVD recorders and duplicators
- Jitter and deviation levels are the lowest in the industry
- Proprietary printable surface media provides professional looking graphics and text on the media surface
- 100 Year data integrity is guaranteed

TABLE OF CONTENTS

Section 1	GENERAL DESCRIPTION.....	8
1.1	Introduction.....	8
1.2	Network Operation.....	8-9
1.2	CopyDisc Platinum XC Series.....	9-11
Section 2	SET UP.....	12-13
2.1	Box Contents.....	12
2.2	Operating Environment.....	12
2.3	Power On.....	13
Section 3	OPERATION.....	14-21
3.1	Turning On.....	14
3.2	Keyboard.....	14-15
3.2.1	^ V < > Key.....	14-15
3.2.5	Stop/Start Key.....	15
3.3	LCD Display.....	15
3.4	Menu Structure.....	15-19
3.4.1	Print Only Mode.....	15
3.4.2	Image Manager.....	16-17
3.4.2.1	Load New Print Image.....	16
3.4.2.2	Show Print Images.....	16
3.4.2.3	Delete Print Images.....	16
3.4.2.4	Rename Print Image.....	16-17
3.4.3	Setup.....	17
3.4.3.1	Printer.....	17
3.4.3.2	Autoloader.....	17
3.4.3.3	Licence Key.....	17
3.4.3.4	Menu.....	17
3.4.4	Utilities.....	18-19
3.4.4.1	Hard Disc Utilities.....	18
3.4.4.2	Firmware Utilities.....	18
3.4.4.3	Loader Utilities.....	18
3.4.4.4	About Hardware.....	19

3.4.4.5	About Firmware.....	19
Section 4	PRINTING VIA DISCPILOT.....	19-28
Section	APPENDICES.....	29-48
Appendix A	Menu Structure.....	29-31
Appendix B	Technical Support.....	32
Appendix C	Routine Maintenance.....	33
Appendix D	CopyDisc with OptiPrinter Pro	34-39
Appendix E	CopyDisc with Prism AutoPrinter	40-44
Appendix F	CopyDisc with Teac P-55	45-48
Appendix G	CopyDisc with Puma Inkjet Printer.....	49-54
	Standard Terms and Conditions.....	55-57

SECTION 1: GENERAL DESCRIPTION

1.1 Introduction

The Verity Systems CopyDisc Platinum printer series provide reliable, unattended inkjet and thermal printing of optical discs.

There are three CopyDisc Platinum printer models:

- CopyDisc Platinum OptiPrinter Pro - inkjet printing
- CopyDisc Platinum AutoPrinter – thermal printing
- CopyDisc Platinum P-55 – thermal retransfer printing

All are similar in operation but offer a difference in print output.

Each model uses a pick and place mechanism to transfer the disc from the Input spindle or basket to the printer and remove the disc from the printer subsequently and place it on the Output spindle.

Two different types of picker mechanism are available: the **Vacuum** picker and the **Mechanical** picker. CopyDisc OptiPrinterPro models are fitted with the mechanical picker as standard. This enables users to print right to the centre of full-face printable, inkjet discs. All CopyDisc thermal printers are fitted with the vacuum picker as standard.



Note:

The mechanical picker is not compatible with the CopyDisc thermal printers.



Note:

Throughout this manual reference is made to CDs. The procedure for DVDs, CD Business cards and mini discs is identical except where stated.

1.2 Network Operation

The CopyDisc Platinum printers are operated using **DiscPilot** advanced networking software. There is no drive fitted so the system is run directly from a PC on a network.

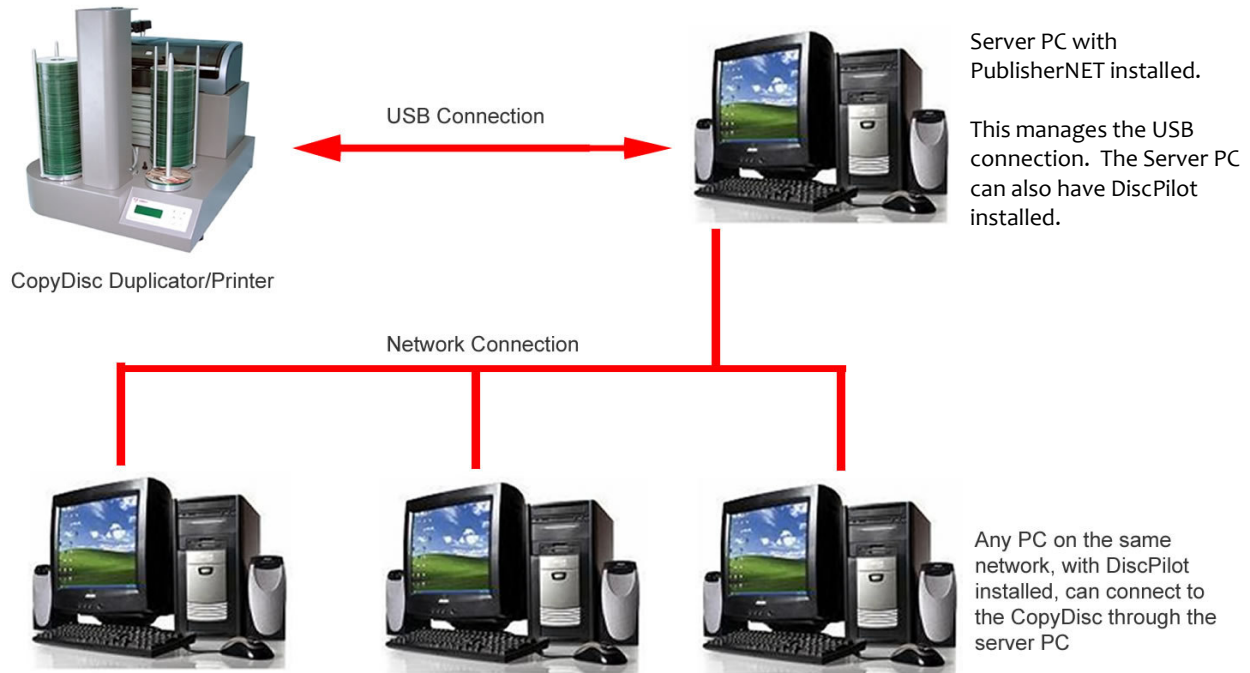
This easy to use yet sophisticated and versatile CD and DVD printer management software system, provides multiple users with access to one of Verity Systems range of automatic printers. DiscPilot allows a CopyDisc to act as a peripheral device across a network.

DiscPilot is a completely new way of networking your CopyDisc. Instead of relying on a traditional Cat5 cable network connection, uses a high speed USB connection for improved reliability and data transmission rates.

Verity Systems **PublisherNET** forms the link between the CopyDisc and the host PC. **PublisherNET** establishes a connection with the CopyDisc through the USB connection and manages data transmission.

This Windows based software suite enables you to print a print file (PRN) stored on your file server, and to request the required number of discs for your CopyDisc to print. CD/DVD print files can also be selected from the CopyDisc's hard drive itself.

DiscPilot has a fully integrated disc label creator. From within DiscPilot you can create your labels, disc images, combine and send them as a 'job' and manage the files on your CopyDisc hard drive.

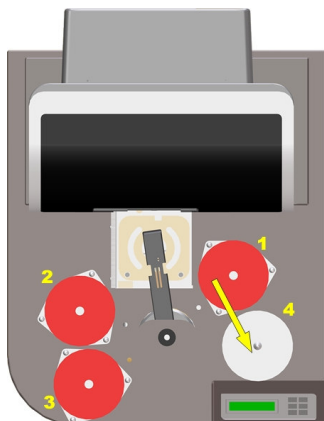


For full instructions on how to set up the PublisherNET server and the DiscPilot client, please refer to the DiscPilot User Manual which can be found on the DiscPilot Software CD.

1.3 CopyDisc XC Systems (660 Capacity)

Not applicable to 220 disc capacity CopyDisc systems

The CopyDisc4 XC and the CopyDisc8 XC used 3 input baskets/spindles and 1 output spindle.



Baskets/Spindles No.1, No.2 and No.3 are used as **input baskets/spindles** in the first instance. Each input basket/spindle holds 220 blank discs, giving a total capacity of 660 discs.

Spindle No.4 is the initial output spindle.

When the printing process begins, blank discs are transported one at a time from input basket/spindle No.1 and placed into the waiting printer tray. Once printed, the discs are transported from the tray onto output spindle No.4.

When all the blank discs from input basket/spindle No.1 have been exhausted, the CopyDisc XC automatically moves onto the blank discs from input basket/spindle No.2

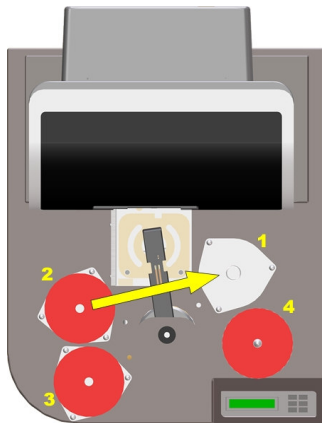


Figure 2

As the original output spindle (No.4) is full from printing all the discs from input basket/spindle No.1, printed discs are now output into empty basket/spindle No.1.

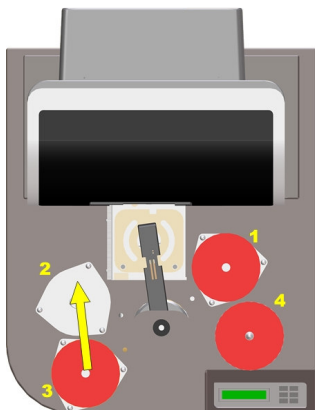
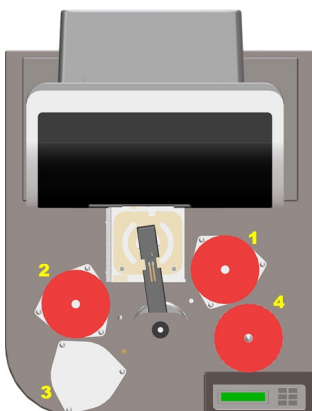


Figure 3

Once input basket/spindle No.2 is empty and basket/spindle No.1 full, the CopyDisc XC will begin loading discs from input basket/spindle No. 3. Printed discs will be output into basket/spindle No. 2.



Once all 660 discs have been copied, your CopyDisc XC baskets/spindles should look like figure 4.

*Figure 4***IMPORTANT:**

The CopyDisc XC uses three input baskets/spindles in order to accomplish the 660 disc capacity. The media is moved from spindle to spindle via the printer in a specific cycle and it is therefore essential that certain rules are followed in order to achieve perfect operation.

- Normally the input baskets/spindles can only be replenished with new media at the end of a spindle cycle and not at the end of or part way through a job.
- The input spindles must not be replenished with new media part way through a spindle cycle unless the power is removed from the CopyDisc XC thus re-setting the spindle cycle.
- The CopyDisc XC will halt any job in the event of detecting an empty third input spindle. At this point, if the job is finished, the processed media may be removed, the spindles replenished with new media and the job re-started.

If the job is not complete and the requested number of copied discs has not yet been fulfilled, the LCD display will display **Input Hopper Empty**. Select **Cancel** if you do not wish to continue with the job. Otherwise by selecting **Continue** the CopyDisc XC will continue, first looking to the first spindle for blank discs, then the second and finally the third. It is important therefore to replenish the correct spindle(s) before continuing.

- Not all input spindles need to be used but they should be used in sequence 1, and 2, and 3.
- The input spindles do not have to be filled to capacity.
- The initial output spindle should always be empty when starting a new job.

SECTION 2: SET UP

Your Verity systems CopyDisc Platinum printer series is designed to allow fast, easy, reliable and unattended printing of CD-R discs. Following are some of the more important features of the Verity Systems CopyDisc Platinum printer.

- Print hundreds of discs per session
- Unattended operation
- Easy to read back lit LCD display
- Network operation

2.1 Box Contents

Carefully remove your CopyDisc Platinum printer from its shipping carton and verify that all parts are present. If there are missing or damaged parts contact Verity Systems or an authorised partner immediately to correct any miss-packed or missing parts.

You should find the following:

- Verity Systems CopyDisc Platinum robot
- Inkjet or thermal printer
- Printer Software CD (including driver and label design software)
- Power Cord
- Input and Output Spindles (Baskets)
- Quick Start Guide
- Manual CD
- Networking CDs (including DiscPilot/CD Label Designer CD and PublisherNET CD)
- Warranty Card



Note:

Please see appropriate appendix at the back for this manual for full details of contents.



Note:

If your Verity Systems CopyDisc Platinum printer is damaged during shipment, please contact the freight carrier first, and then contact your partner or Verity Systems.



Note:

You should save your shipping materials so that if the need arises you can return your CopyDisc Platinum printer for service. This packaging was designed specifically for shipping your CopyDisc Platinum printer. Other packaging may not be as suitable.

2.2 Operating Environment

Your Verity Systems CopyDisc Platinum printer should be used in a climate controlled environment free of dirt, dust, excess humidity, excessive heat or electro-magnetic interference.

Allow at least six (6) inches of clearance around the sides and back of the unit for ventilation. Try and provide enough room around the machine to load and unload spindles, and other work of this type.

2.3 Power On

Fit the printer to the CopyDisc Platinum robot. **Please see the appropriate appendix the end of this manual for full details on how to fit the relevant printer including fitting cartridges or ribbons.**

- Attach the power cord to your CopyDisc Platinum printer, plug it into the mains.
- Switch on the printer followed by the CopyDisc Platinum robot.
- After the power is turned on, the Verity Systems CopyDisc Platinum printer goes through a series of self-tests (see section 3.1 for full details).

As all CopyDisc Platinum printers are operating via a network, the CopyDisc needs to be connected to the server PC running PublisherNET. Please refer to the DiscPilot Networking manual for full details.

SECTION 3: OPERATION

This chapter provides detailed operating instructions for your Verity Systems CopyDisc Platinum printer. Your CopyDisc Platinum printer has many options and features designed to make it more productive and easier to use. Please read through this chapter carefully so that you can take full advantage of all the features of your system.

3.1 Turning On

When the *Verity Systems* CopyDisc Platinum printer is turned on it goes through a series of self-tests and displays several messages.

Following are all the messages displayed during a normal power-up:

```
Initializing System
```

```
Check IDE Port
```

```
Check Printer
```

```
Check Autoloader
```

And Finally:

```
-HOME MENU-
```

```
>Start Job
```

```
Image Manager
```

```
Utilities
```

```
Setup
```

If this series of messages are displayed then your CopyDisc Platinum printer is ready for use. If this series of messages are not displayed or different messages are displayed see the **Error Messages** section (section 4) of this manual.

3.2 Keyboard

Following is the function of each key on the keyboard:

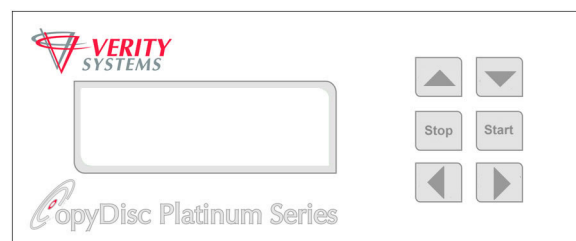


Fig. 1

3.2.1 ^ Key (Up arrow)

If being prompted to enter a number or character this key increments the character at the cursor to the next higher character or number. If a menu is being displayed this key moves the cursor to the next menu selection up.

3.2.2 V Key (Down arrow)

If being prompted to enter a number or character this key decrements the character at the cursor to the next lower character or number. If a menu is being displayed this key moves the cursor to the next menu selection down

3.2.3 < Key (Left arrow)

Left arrow— If being prompted to enter a number or character this key moves the cursor 1 character to the left. If a menu is being displayed this key moves the cursor back a step.

3.2.4 > Key (Right arrow)

Right arrow— If being prompted to enter a number or character this key moves the cursor 1 character to the right. If a menu is being displayed this key moves one level deeper into the menu structure or if the next step is executable it starts the process.

3.2.5 Stop Key

This key stops or aborts whatever is going on. When writing CD-R's the system is busy and this key may be sluggish so press and hold it down until prompted to do something else.

The STOP key exits without saving your changes within each menu.

3.2.6 Start Key

If being prompted to enter a number or name this key accepts the currently displayed selection. If the next item is executable it starts that process. The **Start** key also saves options made within the menus.

3.3 LCD Display

The LCD display is used either to display menus or to show status. For instance while printing it shows what it is doing, the number it has to do, how many it has done and the current mode.

3.4 Menus Structure

Use the up ^ and down v arrow keys to position the cursor (a > character on the left most column of the display) to the desired menu item. Then use the > key to select it.

Following is a description of each menu selection.

3.4.1 Print Only Mode

This menu option will only be visible if you have a Printer attached to your CopyDisc Platinum Series. Use this option if you only require discs to be printed, and not duplicated.

The menu gives the user the option to either load a new PRN files from a CD-R, or select an existing PRN file from the HD. You can also select the quantity required.

3.4.2 Image Manager

This menu option is used to maintain image files kept on the hard drive.

Print Manager

3.4.2.1 Load New Print Image

Allows you to load a new print image to the HD from a CD-R. You will be prompted to enter a name for the image, then press **START** to begin loading.

3.4.2.2 Show Print Images

Show all print images currently stored on the hard drive.

3.4.2.3 Delete Print Images

Select a print image stored on the hard drive to be deleted by positioning the cursor next to that image. Press the > key and you are prompted to confirm deletion by selecting either **Yes** or **No** with the > cursor. Once selected press >.

3.4.2.4 Rename Print Image

Rename a print image currently stored on the hard drive. Select an image stored on the hard drive to be renamed by positioning the cursor next to that image. Press the > key and you are prompted to confirm renaming by selecting either **Yes** or **No** with the > cursor. Select **Yes** and press the > key. You are now prompted to enter the new name.

Since there are no letters on the keyboard text must be entered with the arrow keys. When text needs to be entered all available character positions are displayed between square brackets as follows:

[_ _ _ _ _]

If the initial text is not defined all blanks will be displayed. Otherwise the starting text will be displayed. Press the left ^ or right v arrow to move the cursor the desired character location.

CD Image Name

CD Image names are 8 characters long. Available characters are A-Z, 0-9 and space (blank).

Numbers

Numbers (quantities) are 4 digits long. Available digits are 0-9.

Once finished, pressing **START** accepts the name.

3.4.3 Setup

These menus are used to select various options available on the CopyDisc duplicator.

3.4.3.1 Printer

This option allows the printer type to be selected.

Under **Model**, position the > cursor next to the printer you wish to select and then press the > key.

Under **Status**, select whether you wish the printer to be connected or not by positioning the > cursor next to either **connected** or **disconnected** and then press the > key.

3.4.3.2 Autoloader

Your CopyDisc should be factory set to **Publisher** for 220 capacity CopyDisc systems, or **Autoloader D** for CopyDisc XC (660 capacity) systems.

Under **Status**, select whether you wish the autoloader to be connected or not by positioning the > cursor next to either **enable** or **disable** and then press the > key.

3.4.3.3 Licence Key

This menu function allows you to add, remove and view licence keys. *Please note you should not access this menu unless instructed to do so by authorised Verity Systems personnel.*

3.4.3.4 Menu

This menu function allows you to change the menu view on the CopyDisc. *Please note you should not access this menu unless instructed to do so by authorised Verity Systems personnel.*

3.4.4 Utilities

The utility menu provides several useful functions required for maintaining and setting up your CopyDisc duplicator.

3.4.4.1 Hard Disk Utilities

These utilities are used to set up and maintain the hard drive in your system. The hard drive provides a temporary storage buffer for the CD/DVD images you will be copying or verifying.

Show HD Free Space

Display the currently available, and used hard drive spaces.

Show HD Information

Display type, firmware and capacity of HD installed.

Format Hard Disc

*This function initialises the hard drive directory structure. It should be run anytime a new hard drive is installed in a system. This function can also be used to quick erase all images in the hard drive. You will be prompted to continue with formatting by having to select **Continue** or **Cancel** with the > cursor.*

3.4.4.2 Firmware Utilities

The software that is used by the CopyDisc duplicators to copy and print discs can be changed to add new features or support for new drives. The following functions are used to change the firmware in the machine.

Load System F/W

This function reads firmware from a firmware CD and installs it in the CopyDisc duplicator electronics.

3.4.4.3 Loader Utilities

The utility allows you to check pick and place mechanism from input to drive to printer to output spindle.

Input Bin to Drive: Press the > key and then select the appropriate drive with the > cursor.

Input Bin to Printer: Press the > key.

Drive to Output Bin: Press the > key and then select the appropriate drive with the > cursor.

Drive to Reject Bin: Press the > key and then select the appropriate drive with the > cursor.

Drive to Printer: Press the > key and then select the appropriate drive with the > cursor.

Printer to Output Bin: Press the > key.

Printer to Reject Bin: Press the > key.

Calibrate: Check loading arm is operating correctly.

3.4.4.4 About Hardware

This function is used to display information about the CopyDisc duplicator,

3.4.4.5 About Firmware

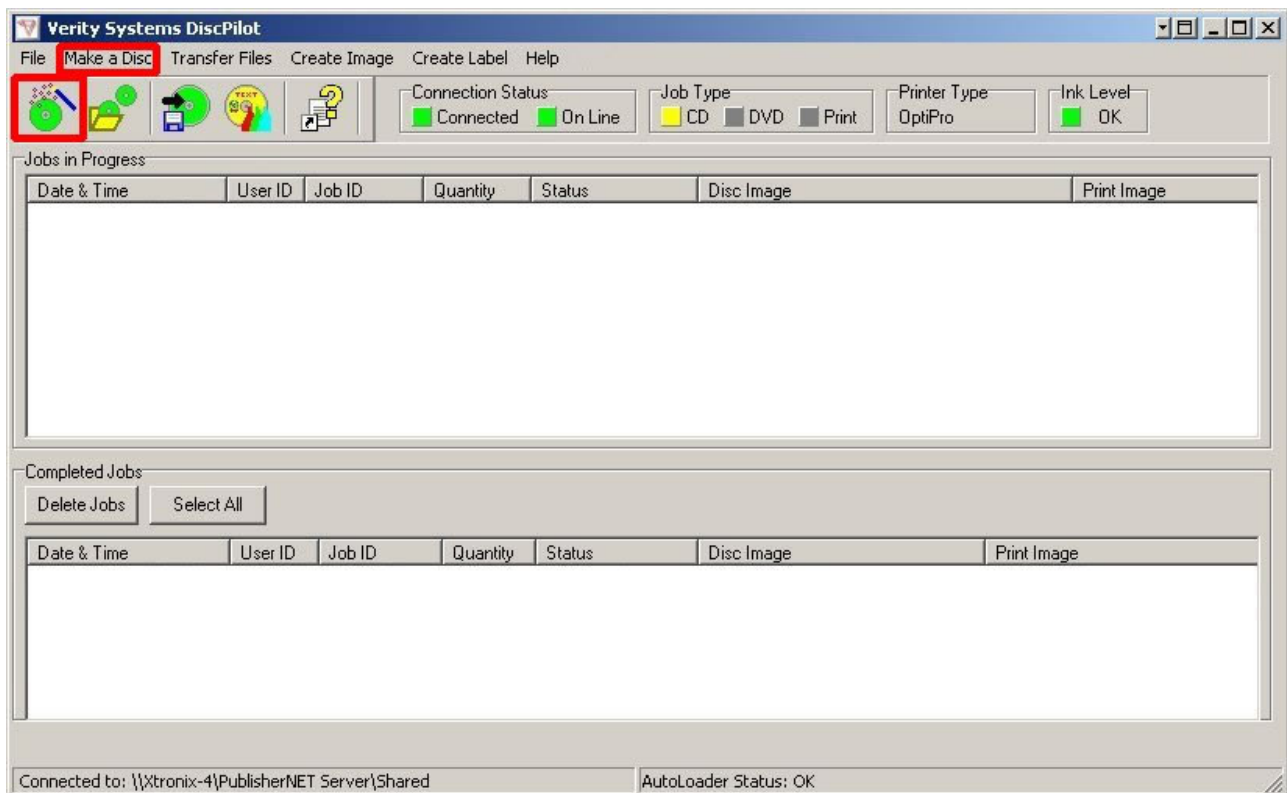
This function is used to display information about the firmware installed on the CopyDisc such as version etc.

SECTION 4: PRINTING VIA DISCPILOT

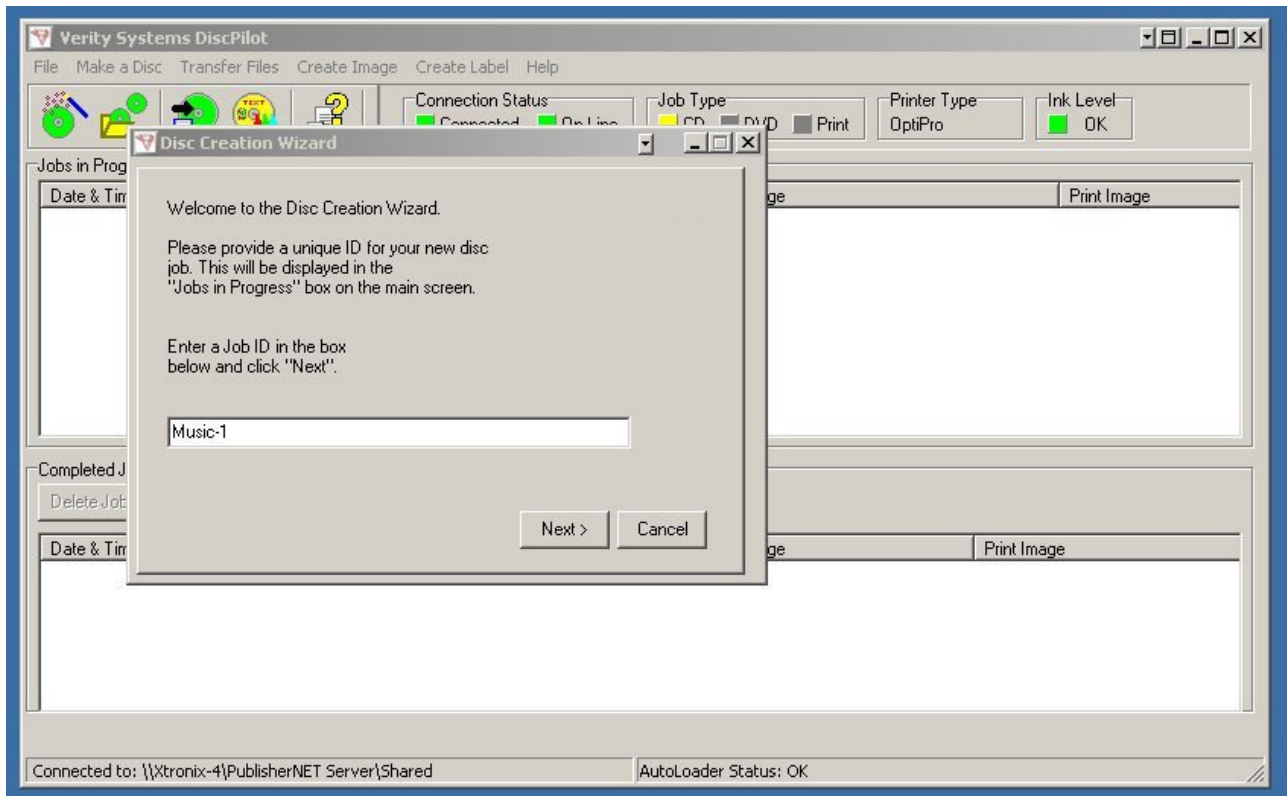
CopyDisc platinum printers are networked systems and they can only be operated using DiscPilot networking software via the users PC.

For full instructions on how to set up DiscPilot, please refer to the DiscPilot User Manual enclosed on the DiscPilot Software CD.

The “Make a Disc” wizard provides the user with easy to use, step by step procedures for printing discs. To launch the wizard, click the “Disc Wizard” icon (highlighted below) or click the “Make A Disc” menu item.



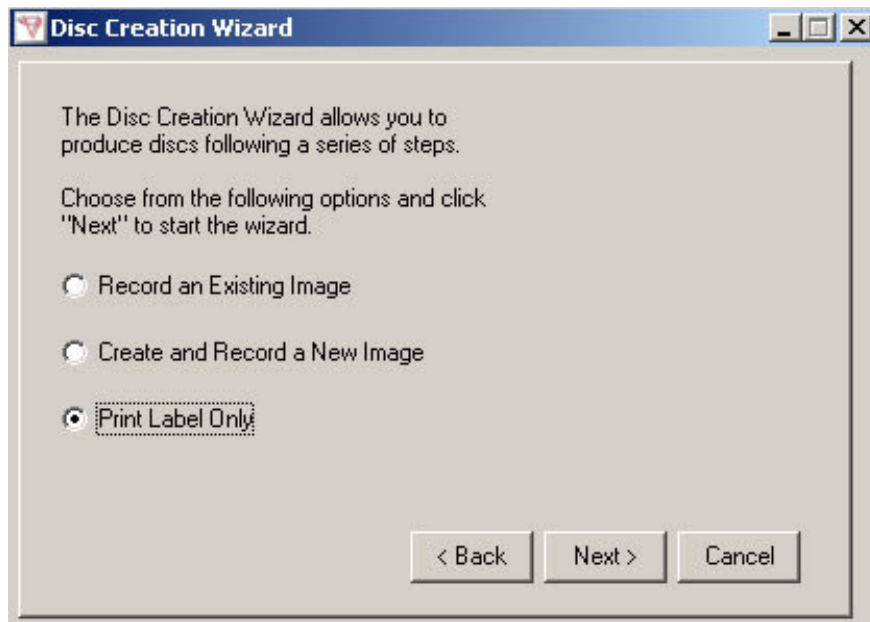
The Disc Creation Wizard is launched.



You will be asked to provide a name for the job you are creating. All jobs submitted must have a unique Job ID. The Job ID must not be the same as any jobs already present on the "Jobs in progress" panel.

Enter a Job ID and click the "Next" button.

Select "Print Label Only" and then click "Next".



Select “Print Label Only” and then click “Next”.



Next, choose the type of job you wish to create.

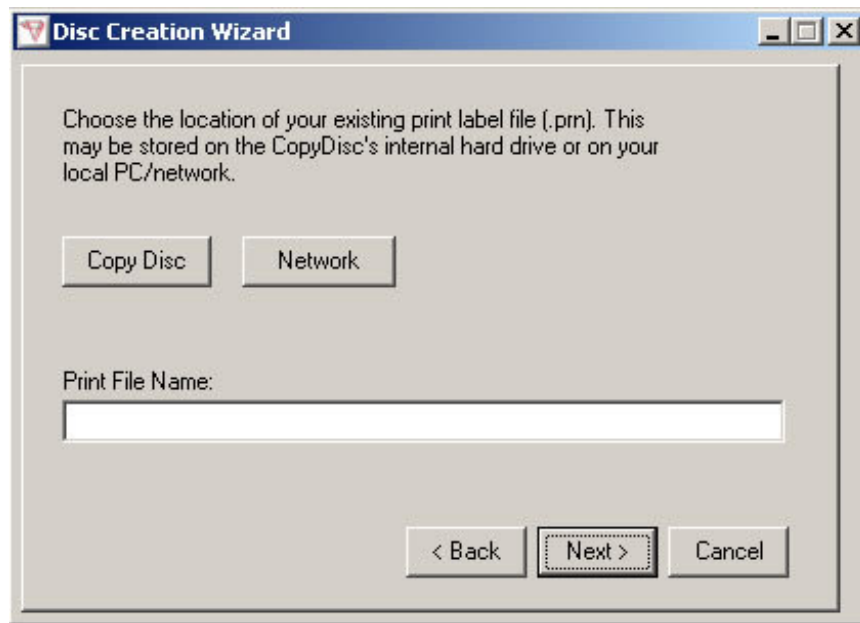
Print an Existing Label: This is a print file (.prn) stored on either the local hard disc, a network resource or on the remote CopyDisc’s internal hard drive itself.

Create a New Label: This will launch **Label Designer** and allow you to create a new print file (.prn).

Once you have chosen the type of job you wish to create, click the “Next” button.

4.1 Printing an Existing Label

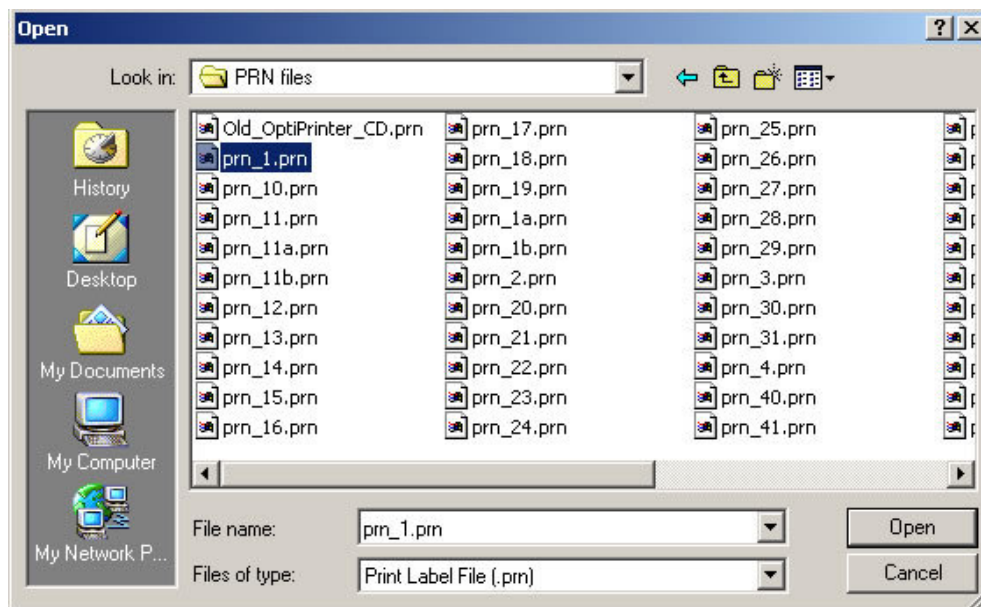
If you chose to print an existing print file (.prn), the next screen will ask you to choose the location of the file.



CopyDisc: Click this button for print files (.prn) stored on the remote CopyDisc's internal hard drive.

Network: Click on this button for print files (.prn) stored on the local PC's hard drive or stored on a network resource.

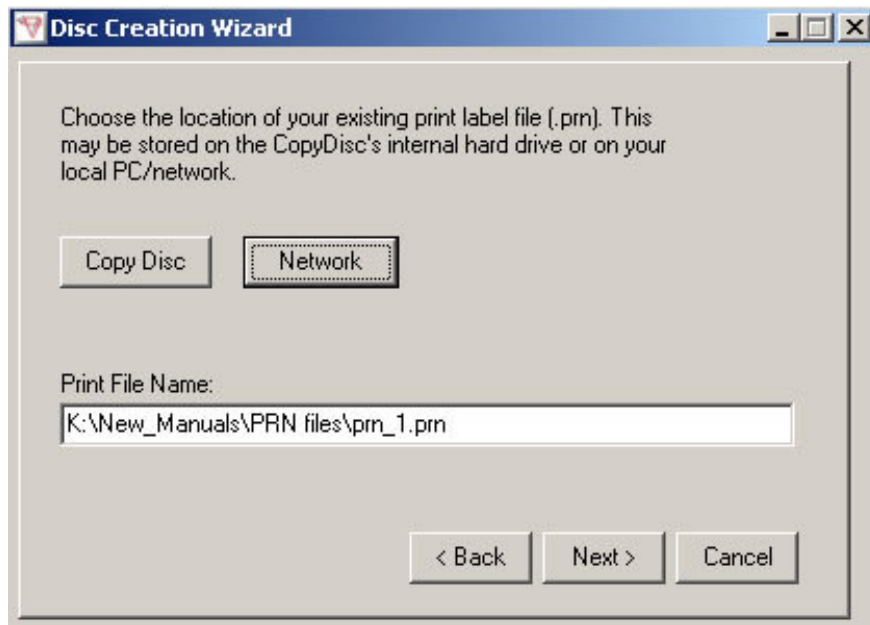
Click on the required button to select the existing image file.



Choose the required print file from those listed. The above example shows print files stored on network folder. Click on the required file to highlight it and then click the "Open" button.

**NOTE:**

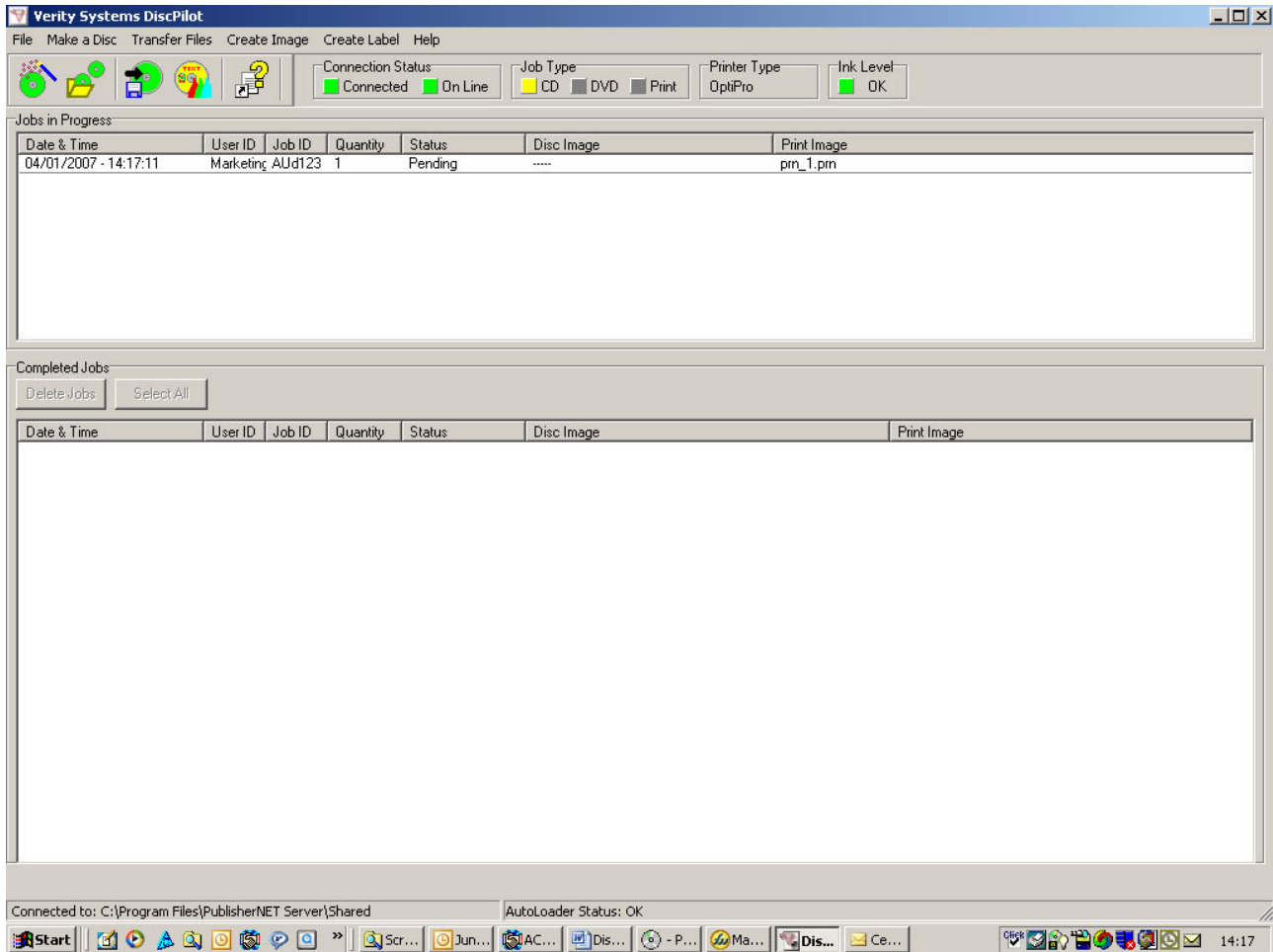
Be sure that you select a print file (.prn) that has been created using the appropriate print driver for the printer in use. If the CopyDisc is fitted with an OptiPrinter Pro inkjet printer, ensure that the print file (.prn) you select has been created using the OptiPrinter Pro print driver.



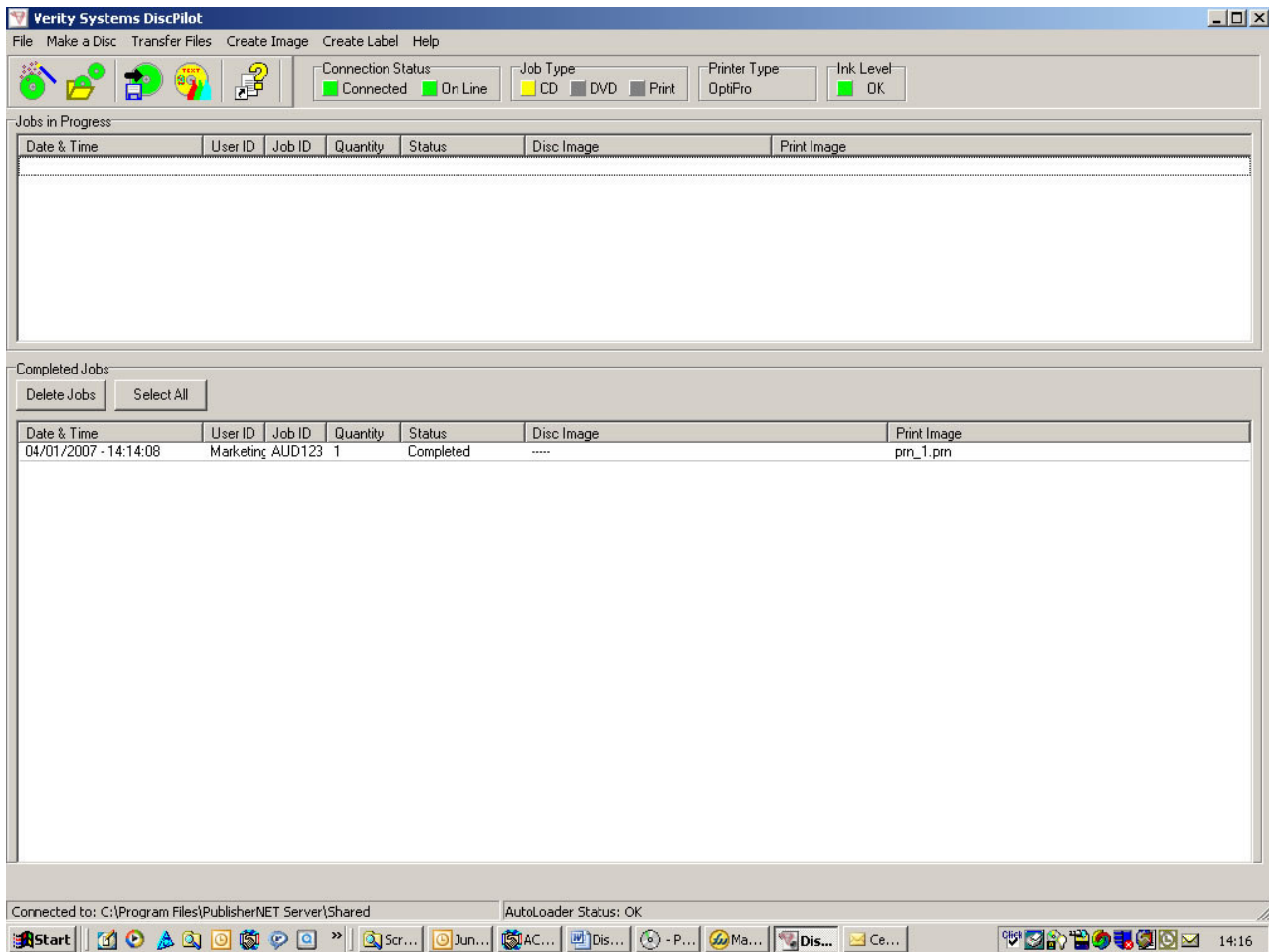
The above shows the selection of the print file. Click on “Next”.

You should now enter the number of copies that are to be made.

To submit the job, the “Submit Job” button should be clicked. This will cause the job to be sent to the remote CopyDisc unit.



Now that the job has been submitted it is sent to the remote CopyDisc. When the file submission is complete, the Disc Wizard is closed and the job is shown in the “Jobs in progress” panel.

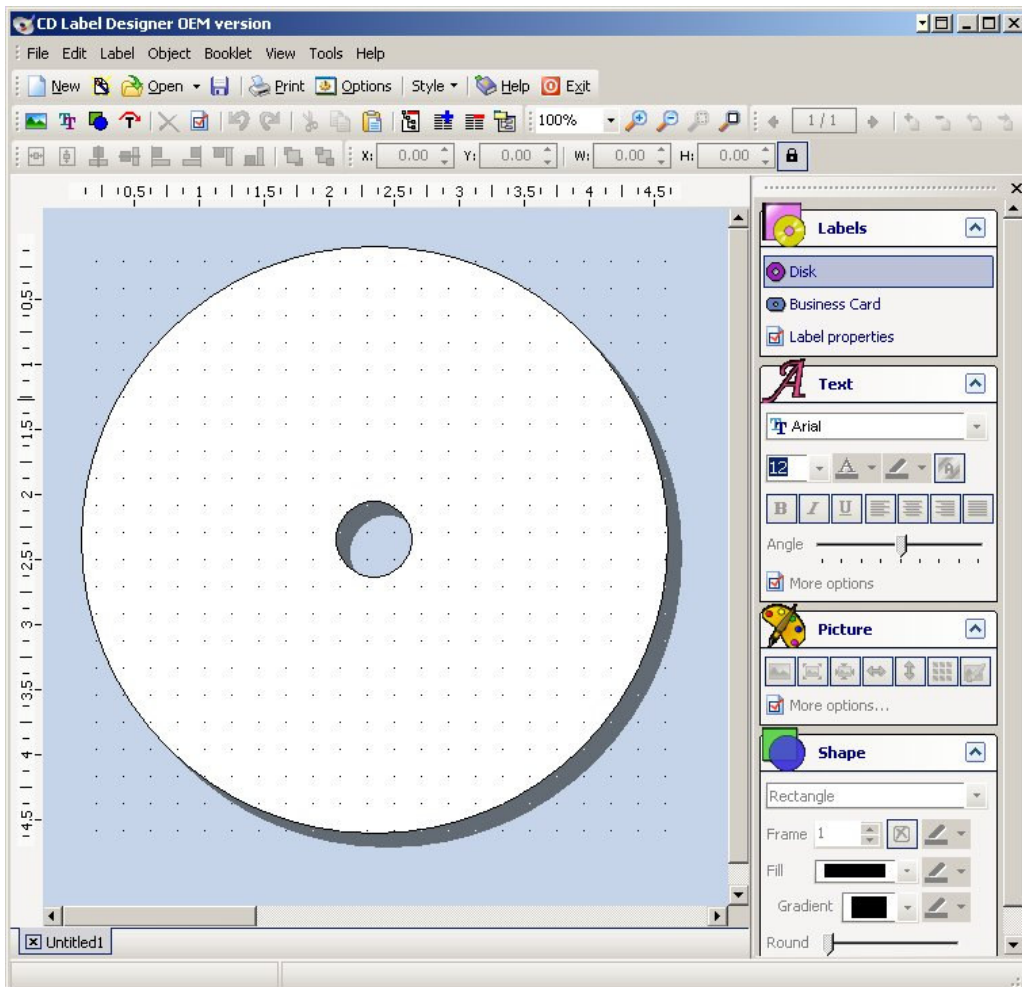
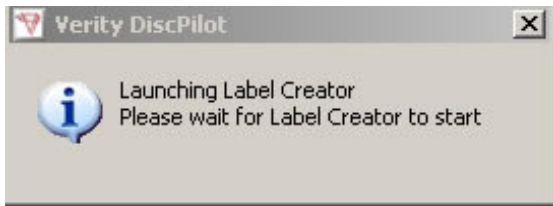


When the job is complete, the job is automatically moved from the “Jobs in progress” panel to the “Completed Jobs” panel.

4.2 Create a New Label

Selecting “Create a new label” and then clicking “Next” will launch the CD Label Designer software.





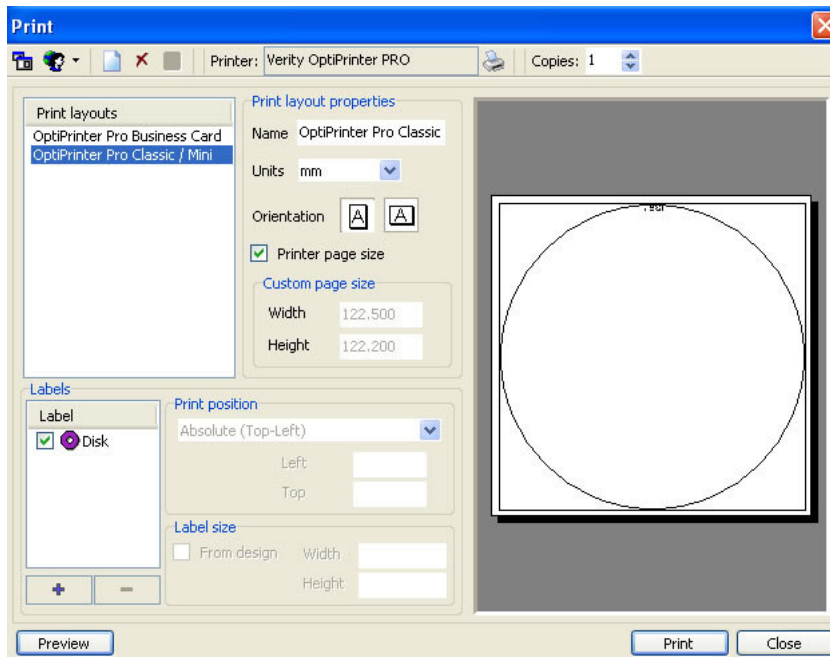
The CD Label Designer can be used to create print files - .prn(s).



NOTE:

Refer to the CD label Designer Help files for details on how to design and create disc labels.

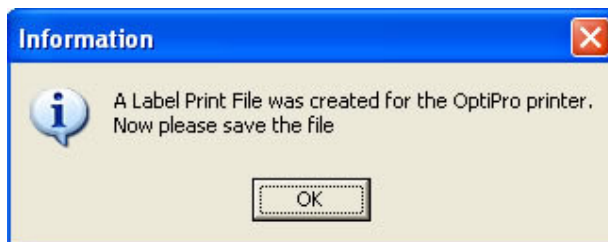
When printing the label file, ensure that the correct printer type for the CopyDisc is selected (in the example below it is the OptiPrinter Pro inkjet printer).



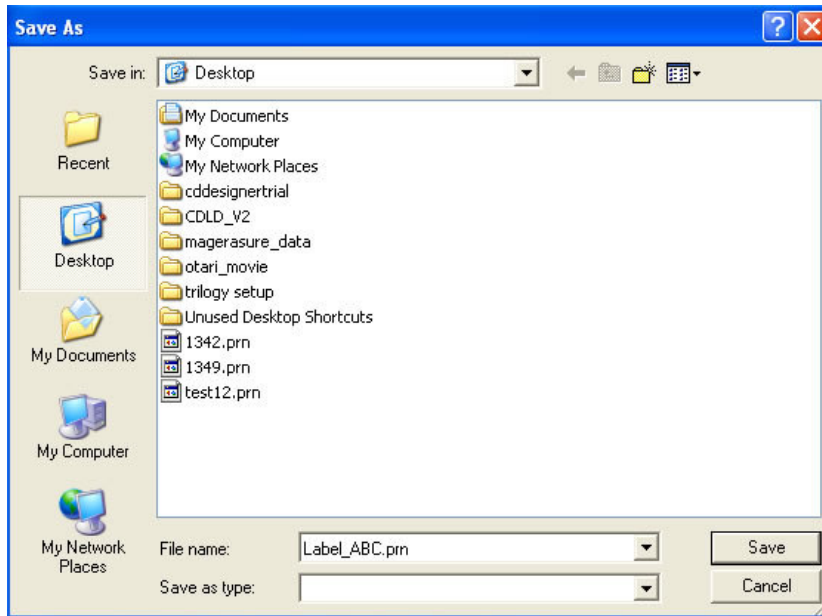
When CD Label Designer is closed, the user will be given the opportunity to name and save the label file that was created.

At this stage CD label Designer is giving you the opportunity to save the image you have just created as a CD Label Designer file (.cld). **DiscPilot only works with .prn files** and you will be given the opportunity to create a .prn file of the image you have created when you exist CD Label Designer completely. You can however choose to save the .cld file at this stage as it allows you to open the file at a later stage to amend, should you wish.

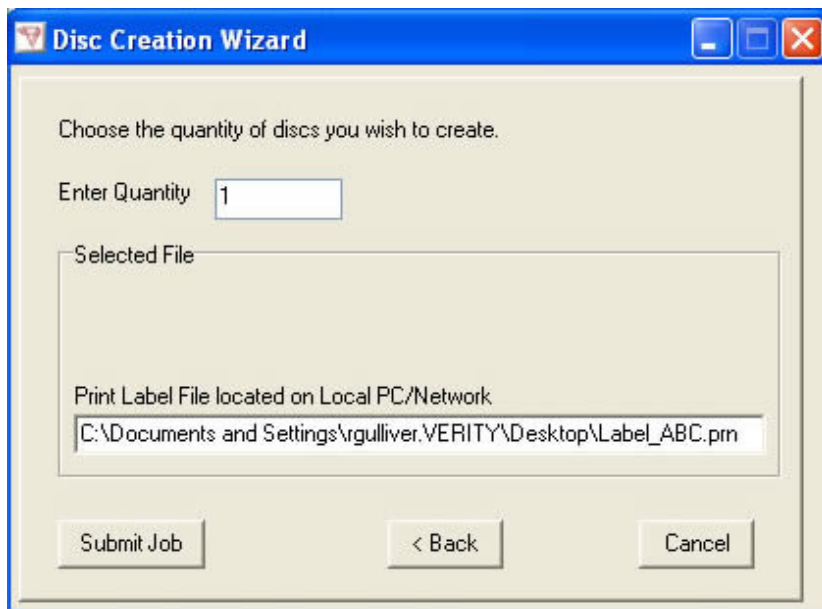
When you close the CD Label Designer program completely, you will return automatically to DiscPilot. The following prompt will appear asking you to save the label print file you have just created as a .prn file.



Choose a location to save the print file.



Click “Save”.



The above shows the selection of the print file.

You should now enter the number of copies that are to be made.

To submit the job, the “Submit Job” button should be clicked. This will cause the job to be sent to the remote CopyDisc unit.

Now that the job has been submitted it is sent to the remote CopyDisc. When the file submission is complete, the Disc Wizard is closed and the job is shown in the “Jobs in progress” panel.

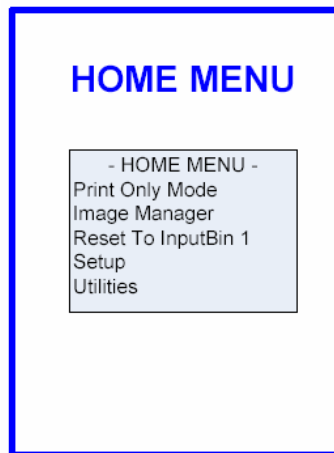
When the job is complete, the job is moved from the “Jobs in progress” panel to the “Completed Jobs” panel.

SECTION 5: APPENDICES

Appendix A: Menu Structure

Following is the Autoloader menu structure.

Home menu



Print Only Menu

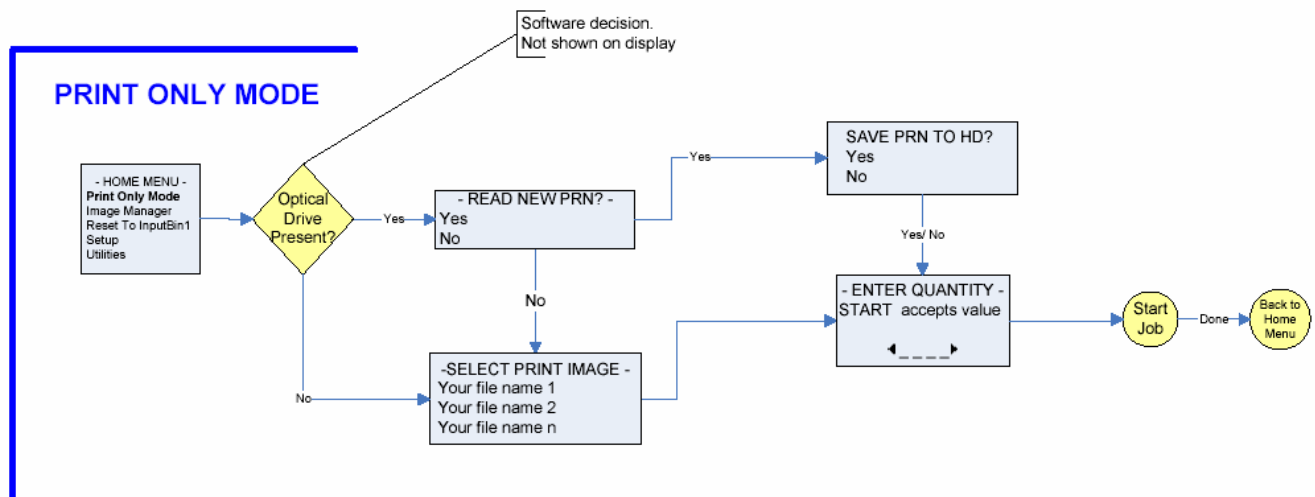
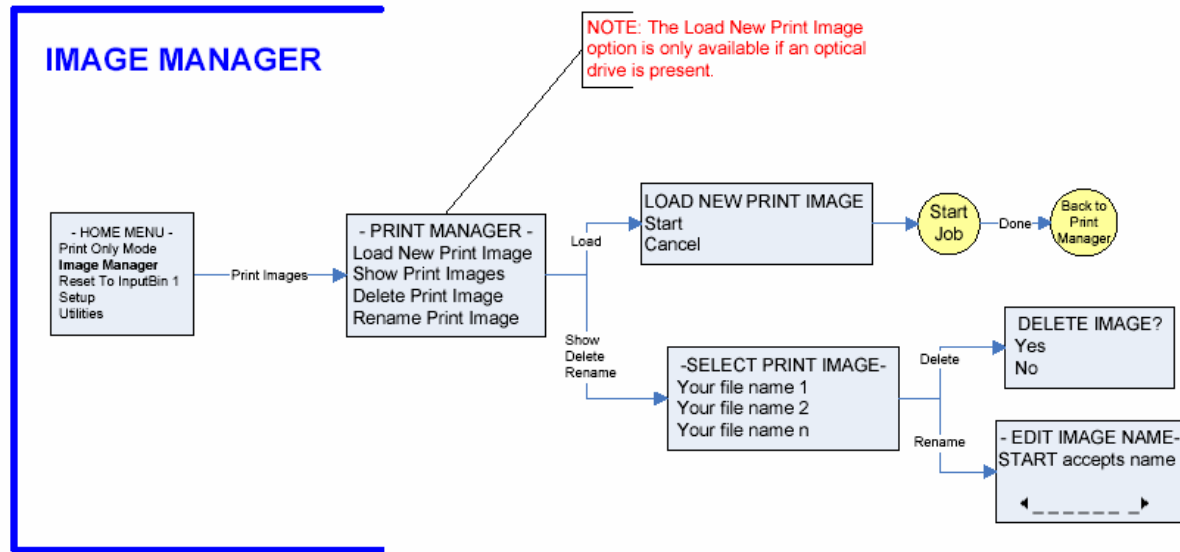
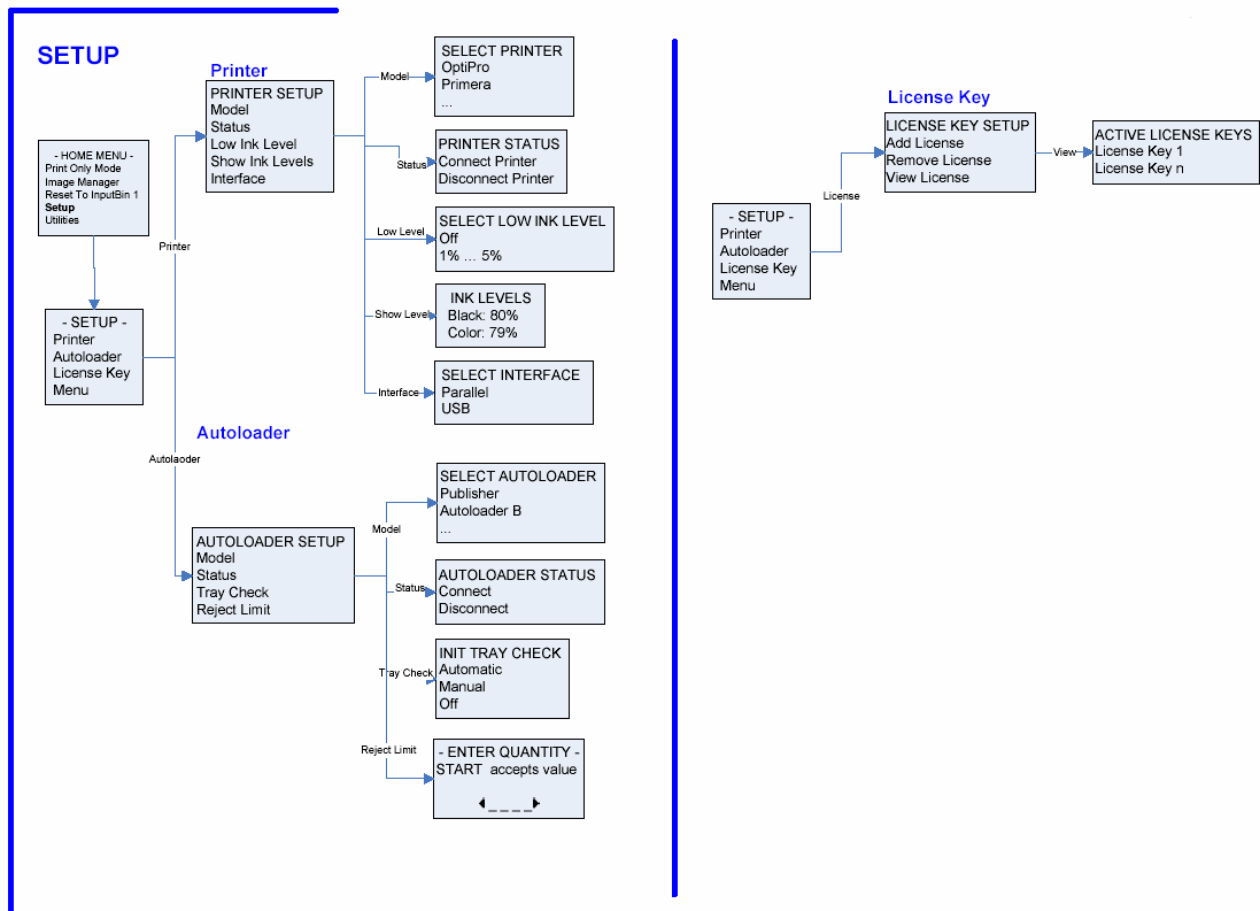


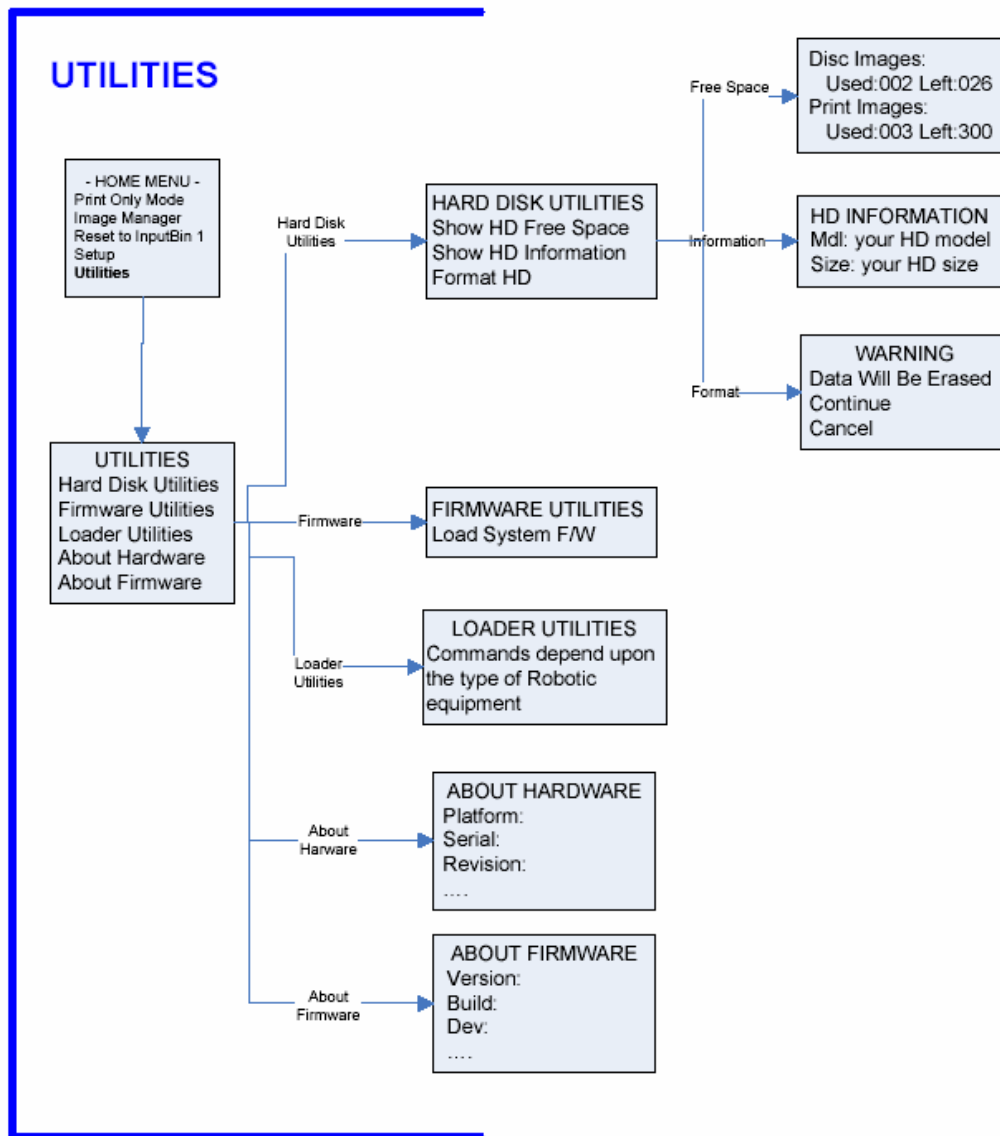
Image Manager



Setup Menu



Utilities Menu



Appendix B: Technical Support

You should first attempt to get technical assistance from your Verity System's authorised partner or reseller.

Verity Systems support personnel can be reached at:

UK Support

Verity Systems Ltd.

Verity House

2 Eastern Road

Aldershot

Hants, GU12 4TD

UK

Tel: +44 (0) 1252 796901

Fax: +44 (0) 1252 316555

Email: uksupport@veritysystems.com

8.30am - 5.00pm GMT

US Support

Verity Systems, Inc.

5441 Merchant Circle, Unit A

Placerville

CA

95667

USA

Tel: (530) 626-9363

Fax: (530) 626 9395

Email: ussupport@veritysytems.com

8.30am - 5.30pm PST

Appendix C: Routine Maintenance

Your CopyDisc unit should be kept clean to ensure a long and reliable service.

Cleaning the CopyDisc

Always switch off and disconnect the unit from the mains supply before cleaning.

If it gets dusty, the casing of your CopyDisc can be cleaned with a small, dry brush.

The main shaft should always clear and free from dirt and contaminants.

Every 10,000 CDs or more often if the unit is used or stored in a dirty environment; the main shaft should be cleaned.

First remove the dirt using a lint free cloth and a degreasing agent (not water!), Isopropyl Alcohol (IPA) is an ideal cleaning agent.

After this apply a small drop of light machine oil with a lint free cloth, and this should be run up and down the main shaft.



NOTE:

It is important to clean the slide bar before re-lubricating it!

Appendix D: CopyDisc OptiPrinter Pro Platinum

This section will provide you with information on how to set up and operate your CopyDisc Platinum OptiPrinter Pro.

There are two versions of the CopyDisc OptiPrinter Pro printer. This is a networked device and must be operated via a PC and the DiscPilot Networking software.



Note:

Good quality, inkjet printable discs should be used with the CopyDisc OptiPrinter Pro.



Note:

Your CopyDisc OptiPrinter Pro is fitted with a mechanical picker, which enables you to print right to the centre of full-face printable, inkjet discs.

For full details of the OptiPrinter Pro's functions, you should refer to the OptiPrinter Pro manual.

Box Contents

Carefully remove your CopyDisc printer from their shipping cartons and verify that all parts are present. If there are missing or damaged parts contact Verity Systems or an authorised partner/reseller immediately to correct any miss-packed or missing parts.

- Verity Systems CopyDisc Platinum robot (fitted with printer plate – networked version)
- OptiPrinter Pro inkjet printer
- Power Cables x 2 (one for CopyDisc Platinum and one for OptiPrinter Pro)
- Printer USB Cable (to attach printer to PC if required)
- Serial Connector Cable and Parallel Cable (attached to CopyDisc Platinum)
- Input Basket and Output Spindle
- Black and Colour Ink cartridge
- Quick Start Guide and CD with user manual, printer drive and test image
- Printer Driver CD
- CD Label Designer software (not necessary when operating the OptiPrinter Pro via the CopyDisc)
- 2 blank CD-Rs
- Warranty Card
- Networking software CDs (DiscPilot Client/CD label Designer CD and PublisherNET Server CD)

Attaching your Printer

Your CopyDisc Platinum printer will come with the printer plate attached as shown in Figure E1.



Fig E1

Remove the OptiPrinter Pro from its packaging. You will notice that the base of the printer has location holes, which directly mirror the location pins situated on the printer plate.

Carefully position the printer onto the printer plate (see Figure E2) ensuring that the location pins fit snugly into the location holes on the base of printer itself.



Power On

Connect the parallel cable and the serial control cable to the printer (Figure E3). Now connect the respective power cables to the printer and the CopyDisc and connect to the mains.

Press the power on button on the front, right of the printer first followed by the power on button at the back of your CopyDisc. When turning power off, switch off the printer first followed by the CopyDisc.

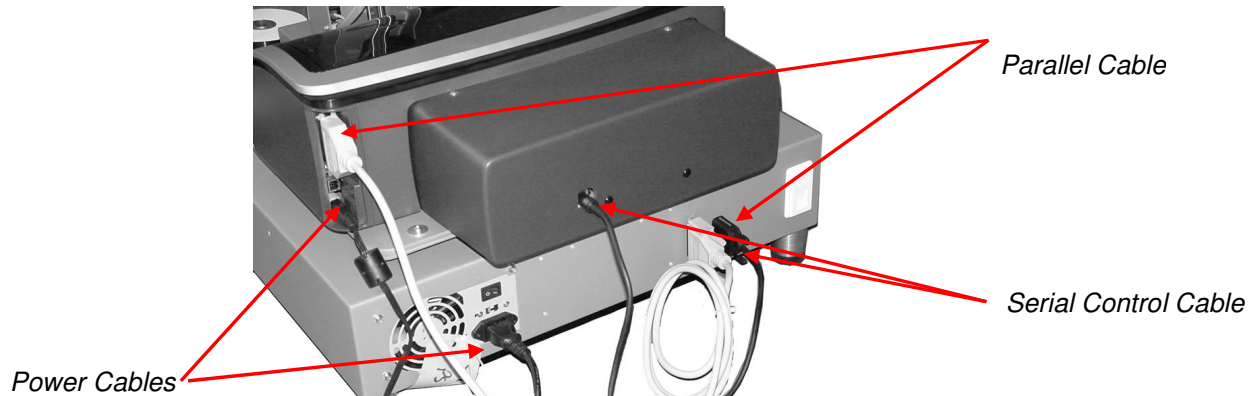


Fig E3

Adjusting the Printer Position

Correct alignment of the OptiPrinter Pro on the CopyDisc system is essential to ensure the unit works efficiently. If your system has problems picking up from the OptiPrinter Pro the following procedures should help to solve the problem.



Note:

Lack of accuracy in setting the pick up position will lead to miss-picks and dropped discs.

To ensure accuracy follow these steps:-

1. Have the printer and CopyDisc in a state where there are no jobs running.
2. Scroll down to Utilities using the ▼ key and press ►
3. Use the ▼ key to select Loader Utilities and press ►
4. Use the ▼ key to select 'Input Bin to Printer' and press ►
5. The printer tray will open and a disc will be placed onto the tray.
6. Examine where exactly the disc has been placed on the tray. The disc must be 0.5mm (0.0197") from the 2 front pins on the drawer and be on equal distance from each pin.

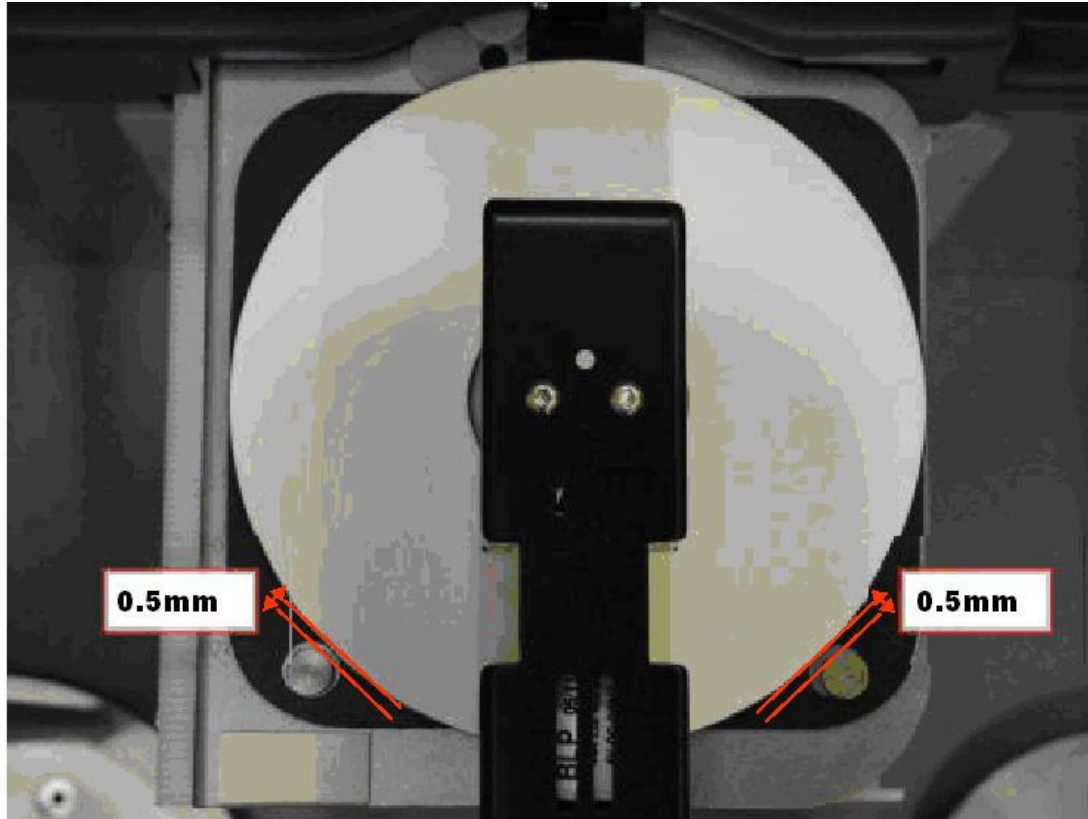


Fig. F4

6. Determine which way the printer needs to move to receive the disc properly.
7. Loosen the retaining screws on the printer plate and make the adjustment (it may help to mark its current position before moving in case it slips).
8. Use the ▼ key to select 'Printer to Output Bin'. The disc will be taken from the printer.
9. Go back to step 4 to check the alignment.
10. Once the printer plate is in position, tighten the screws on the plate.

Fitting the Ink Cartridges

1. Press the Power key to turn on the printer.
2. Open the top cover and lift the print cartridge latch to the open position (figure E5).
3. Slide the print cartridge out of the cradle (figure E6).
4. Remove the tape from the cartridge (figure E7).
5. Hold the cartridge so that the copper strip is on the bottom rear and slide the cartridge firmly into the cradle. Push down the cartridge latch until it snaps shut (figure E8).

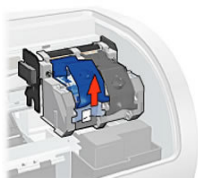


Fig. E5

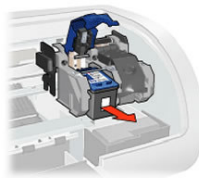


Fig. E6



Fig. E7



Fig. E8

Installing the Printer Drivers on your PC



Note:

Your OptiPrinter PRO **should not** be connected to your PC during the initial software installation. If connected, **remove the USB and power cables from the printer**. There may be variations in the following instructions depending on operating system (2000 or XP) and configuration.

1. Place the Printer Driver CD into the CD-ROM drive of your PC. The **Verity_OptiPrinter Pro** installation wizard should automatically start.
2. Follow the on-screen instructions, clicking **Next** when prompted. When prompted, click **Install** to begin installation.
3. The **Digital Signature Not Found** message box will appear (figure E9). You will be asked if you wish to continue installation, select **Yes**. In Windows XP, select **Continue Anyway**.
4. On the final screen click **Finish**.
5. Connect the OptiPrinter Pro to your PC via the USB cable.
6. Connect the power cable to the back of the OptiPrinter Pro and plug into the power supply. Switch on the printer.
7. If the **Digital Signature Not Found** message box appears again, select **Yes** to continue installation. In Windows XP, select **Continue Anyway**.
8. The **Found New Hardware** box will appear on screen, which will search for the driver. In Windows XP select **No, not at this time** and click **Next**.
9. At the next box, select **Install the software automatically (Recommended)** and click **Next**.
10. If the **Digital Signature Not Found** message box appears again, select **Yes** to continue installation. In Windows XP, select **Continue Anyway**. When prompted, click **Finish**.



Fig. E9



Note:

The message, which appears above, is merely precautionary from Windows and it is not necessary to stop the installation.

**Note:**

*If your PC does not recognize the new OptiPrinter PRO hardware when you first connect it to your PC, you should load the print driver via the **Add Printer** icon on your Printer settings:*

1. Place the Printer Driver CD into your PC's CD-ROM drive.
2. On you PC's desktop, select **Start, Settings** and **Printers**.
3. Double click the **Add Printer** icon and follow the on screen instructions.
4. When prompted, select **Local Port**.
5. When the Wizard asks for the name of the printer, click the *Have Disk* key and navigate to the **enu/drivers/win2k_xp/OptiPrinter_Pro.inf** file on the CD-ROM and select **Open** and then **OK**.
6. The driver will begin to install on your PC.
7. Whenever prompted click **Next**.
8. When complete, select **Finish** and the Verity Systems OptiPrinter PRO print driver icon will appear in your printer settings.

You are now ready to print to your CopyDisc OptiPrinter Pro via DiscPilot networking software. Refer to section 4 for details.

Appendix E: CopyDisc AutoPrinter Platinum

The section will provide you with detailed information on how to set up and operate your CopyDisc Autoprinter Platinum printer fitted with a Prism thermal printer.



Note:

Your CopyDisc Autoprinter Platinum is fitted with a vacuum picker. The mechanical picker is not compatible with the CopyDisc Autoprinter Platinum.

Box Contents

Carefully remove your CopyDisc Platinum printer from their shipping cartons and verify that all parts are present. If there are missing or damaged parts contact Verity Systems or an authorised partner/reseller immediately to correct any miss-packed or missing parts.

You should find the following:

- Verity Systems CopyDisc robot
- Prism thermal printer, fitted with a colour thermal ribbon
- Printer Plate (with 4 fixing screws and washers)
- Power Cable x 2
- Printer parallel cable and printer serial cable
- Input and output spindles
- User Manual CD and Quick Start Guide
- Printer Manual Folder (hard copy)
- Printer Driver CD
- Perfect Image Graphics software CD (**not utilised when operating the Prism via the CopyDisc**)
- Warranty Card
- Networking software CDs (DiscPilot Client/CD label Designer CD and PublisherNET ServerCD)

Attaching your Printer and Duplicator

The printer first needs to be attached to the printer plate before fixing it to the CopyDisc unit.

Carefully turn the printer up side down and remove the four feet on the base of the printer (figure F1).

Place the printer plate on top of the printer, matching the holes on the plate with the feet. Secure the plate in place using the four small silver screws included (figure F2).



Fig. F1

Fig. F2

Unscrew and remove the 4 screws and washers positioned on the top of the CopyDisc. Turn the printer with plate the correct way up and place the printer and plate over the top of the CopyDisc, matching up the corresponding holes in each corner of the plate with those in each corner of the CopyDisc unit and then loosely screw into place with the four screws and washers just removed, (figure F3).

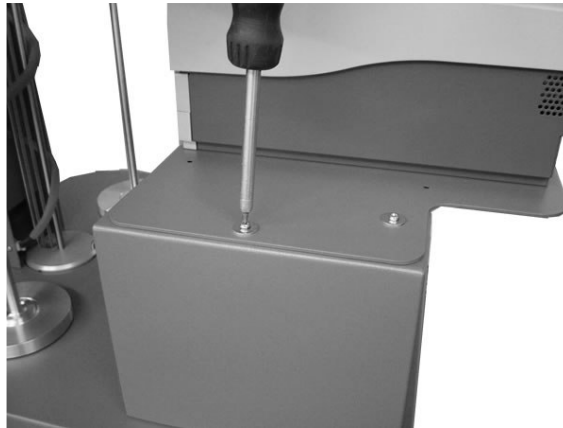


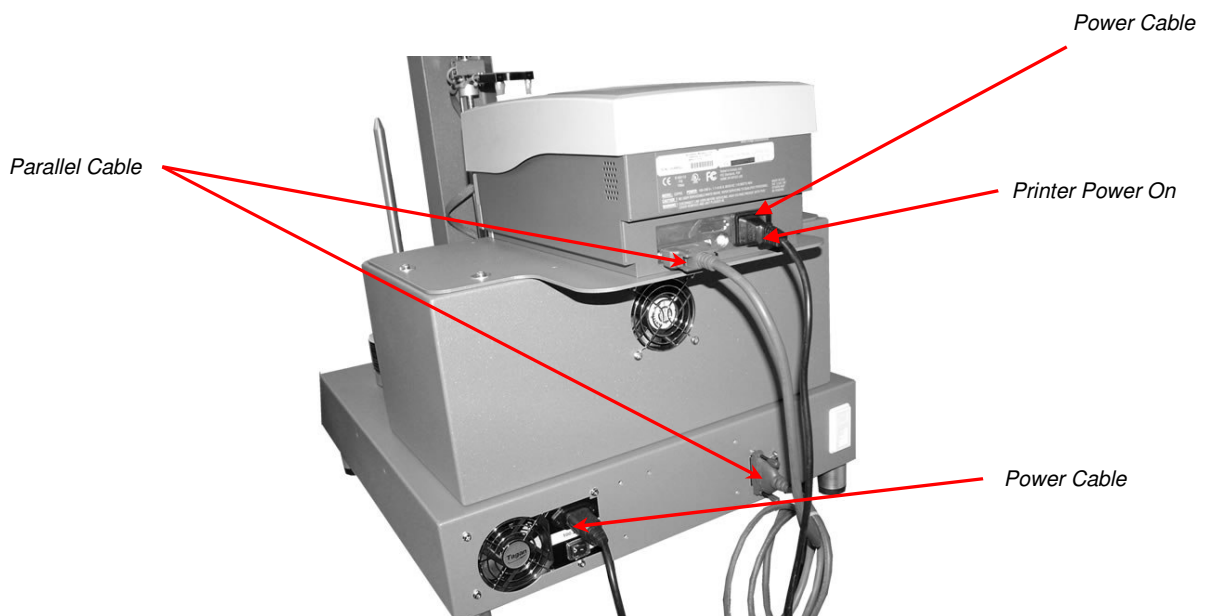
Fig. F3


Note:

Do not tighten the screws at this point, as some adjustments to the plate's position may be required.

Power On

1. Connect the **parallel** cable and **serial** cable to the back of the CopyDisc and then to the back of the printer (figure F4).
2. Connect the printer to the CopyDisc unit using the power connector cable.
3. Now connect the power cable to the back of CopyDisc printer and connect to the mains (figure F4).
4. Press the power on switch on the printer, located at the back of the printer followed by the power on switch at the back of your CopyDisc. When switching off your CopyDisc Autoprinter, switch-off the printer first followed by the CopyDisc.



CopyDisc Power On

Fig. F4

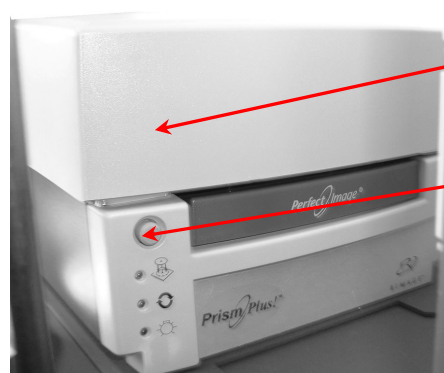


Fig. F5

Adjusting the Printer Position

Your CopyDisc Autoprinter Platinum now needs to be aligned so that when a disc is released into the printer it fits snugly in the printer tray.

1. Switch on the Prism printer followed by the CopyDisc.
2. Open the printer tray by pressing the key on the front of the printer (figure F5)
3. On the LCD panel on the front of the CopyDisc unit move the > cursor using the arrow keys until it is level with the **Utilities** and press the > key. Now scroll down to **Loader Utilities** and press the > key.
4. Move the > cursor to **Calibrate** and press the > key. The robotic arm re-sets itself.
5. Place a disc onto the Input spindle, move the > cursor to **Input Bin to Printer** and press the > key. The robotic arm picks the disc from the Input spindle and places it into the printer tray. Check to see if the disc is situated in the correct position within the tray. The disc should sit on the rubber pad between the two alignment pins and the centring pin (figure G6). If the disc is resting on the alignment pins, the printer will not close or print.
6. If the disc does not fit within the alignment and centring pins, the printer's position in relation to the CopyDisc unit needs to be adjusted. Loosen the printer plate screws (do not remove them completely) and gently tap the plate in the direction required to align the printer.

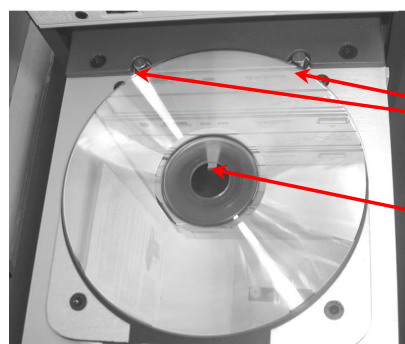


Fig. F6

7. Once again, place a disc onto the Input spindle, move the > cursor to **Input Bin To Printer** and press the > key. The robotic arm picks and places the disc from the Input

spindle and places it into the printer drawer. Continue this process until the disc is placed correctly into the printer tray.

**Note:**

Only tiny movements to the printer plate are required. Use your hand to tap the printer plate into position bit by bit.

8. Once the printer plate is in position, tighten the screws on the plate.

Fitting the Thermal Ribbon

Your Prism thermal printer will come fitted with a colour thermal ribbon and a spare black ribbon. For details on how to change the ribbon, please see the printer manual for full details.

Installing the PC Based CD Printer Drives

**Note:**

You must install the Windows 2000/XP printer driver before any software can print to a CD printer in the Windows 2000/XP environment.

To Install the Printer Driver

1. If CD Designer or any other label editor is open, exit the application.
2. Insert the distribution CD into the CD-ROM. (If the files were distributed on diskette, insert the disk into a floppy drive.)
3. From the Taskbar, click the **Start** key.
4. Point to **Settings**, and then select **Printers**. The Printers window will be displayed.
5. Double-click the **Add Printer** icon.
6. If the computer is connected to a network, a screen will be displayed asking whether the printer is attached locally or to a network. Select **Local** and then select **Next**.
7. Select the **LPT1** port from the list of Available Ports.
8. Select **Next**.
9. Select the **Have Disk** key.
10. Type **E:\Printer_Drivers\Prism**, where **E:** is the CD ROM driver or browse to the Win2K_XP folder on your floppy and then click OK.
11. Double-click on **ccd2kxp**.
12. After "Perfect Image CD Printer is displayed, click **Next**.
13. If the Windows NT CD-R Printer driver is already installed, the Add Printer Wizard may ask whether you wish to keep the existing driver or replace it. Always click **Replace**, and then click **Next**.
14. You have the option of renaming the printer in the Printer Name box. The name can be up to 31 characters long.
15. Choose whether you want this printer to be the default printer. Click **Next**.
16. If the printer is not being shared, click **Next**. Otherwise you need to give the printer a share name.
17. Click **No** to the test page question, and then click **Finish**.
18. On Windows 2000 if the "Digital Signature Not Found" dialog box appears, select **Yes** to complete the installation. (A Windows 2000 system may be configured to prevent an unsigned printer driver from being installed or to warn that a driver does not have a Digital Signature. If the Windows 2000 system is configured to "block" an unsigned printer driver from being installed, please relax this restriction in order to install the Perfect Image printer

- driver, in the **Driver Signing** dialog on the **Hardware** Tab at **Start/ Control Panel/ System**. If the message is a "warning", press **Yes** to continue with the installation.)
19. If a message displays asking for the Windows NT CD-ROM, remove the driver disk and insert the Microsoft Windows NT CD-ROM or the requested disk of the Microsoft Windows distribution disks, then click OK.
 20. Click on the **Device Settings** Tab to review or change any of the Printer Properties. Typically the default values provide a good starting point. You can use the "What's This" option, in the mouse drop down menu to learn more about the usage of each feature. Click **OK** to close each dialog.
 21. When you complete the installation you should re-boot your system, (If a prior version of this printer driver was installed NT will continue to use the old version of the printer driver but may display the new version number until the system is re-booted. We recommend that you power down the computer rather than "Restarting" the system.)

You are now ready to print to your CopyDisc Autoprinter Platinum via DiscPilot networking software. Refer to section 4 for details.

Appendix F: CopyDisc P-55 Platinum

The section will provide you with detailed information on how to set up and operate your CopyDisc P-55, auto-loading Teac P-55 thermal re-transfer printer.



Note:

Good quality, thermal printable discs (specific for thermal re-transfer printing) should be used with the CopyDisc P-55.



Note:

Your CopyDisc P-55 is fitted with a vacuum picker. The mechanical picker is not compatible with the CopyDisc P-55.

Box Contents

Carefully remove the CopyDisc autoloader and the TEAC P-55 printer from its shipping cartons and verify that all parts are present. If there are missing or damaged parts contact Verity Systems or an authorised partner immediately to correct any miss-packed or missing parts.

You should find the following:

- CopyDisc autoloader
- TEAC P-55 thermal retransfer printer
- Printer plate and 4 fixing screws with washers
- Power Cables x 2
- Printer parallel cable (Cannon 'D' 25 way) and serial cable connector
- Input and Output Spindles
- One photo and one transfer ribbon
- Quick Start Guide
- Manual CD
- Printer Driver CD
- Disc Label Editor graphics software CD (**not utilised when operating the TEAC P-55 via the CopyDisc**)
- Warranty Card
- Networking software CDs (DiscPilot Client/CD label Designer CD and PublisherNET ServerCD)

Fitting the Thermal Ribbon

Your TEAC P-55 thermal printer will come with a photo and a transfer thermal ribbon. For details on how to fit the ribbons, please see the TEAC P-55 printer manual on the Utility Software CD included with your printer.

Attaching your Printer

Your CopyDisc P-55 will come with the printer plate, which needs to be fitted to the CopyDisc unit before the printer can be fitted.

Place the printer plate onto the CopyDisc unit as shown in Figure F1, matching the holes on the plate with the holes on the CopyDisc unit. Screw the plate into place using the



4 washers and screws provided. Do not tighten the screws completely at this point. Remove the TEAC P-55 from its packaging. You will notice that the base of the printer has location holes, (see figure F2), which directly mirror the location pins situated on the printer plate. Carefully position the printer onto the printer plate (see figure F3) ensuring that the location pins fit snugly into the location holes on the base of printer itself.

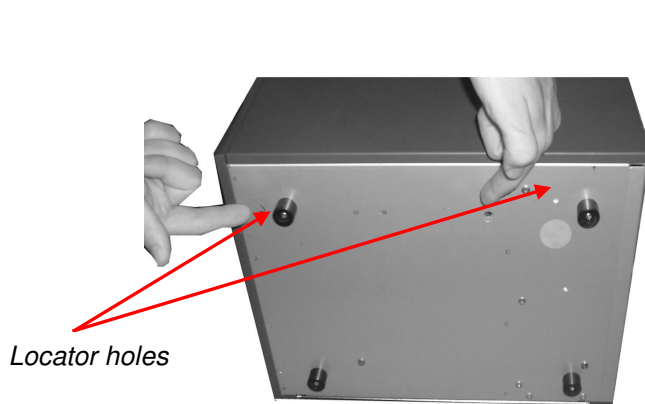


Fig. F2

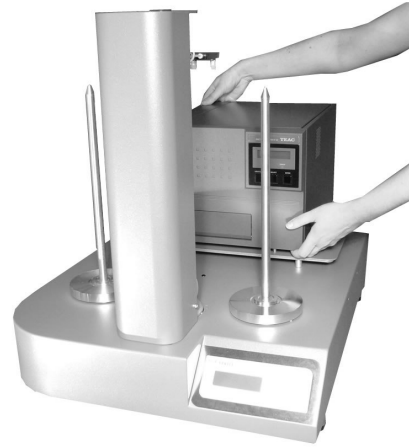


Fig. F3

Power On

Connect the parallel cable and the serial cable to the printer (figure F4). Now connect the respective Power Cables to the printer and the CopyDisc and connect to the mains.

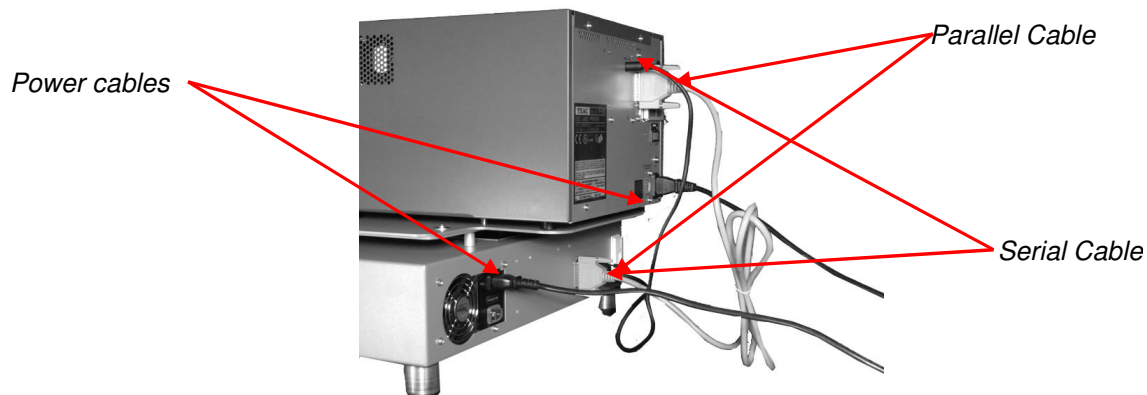


Fig. F4

Press the "power on" button on the back of the printer. The display on the printer should read **Ready**. Press the **Select** button until the LCD display shows **Interface...**. The printer should be factory set to read **Interface Parallel**. If this is the case, press the Select button again until the screen reads **Ready**.



Note:

*If the printer reads **Interface USB**, press **Enter** then **Select** to change it to **Interface Parallel**. Press **Enter**. You will now need to power off the printer and power on again.*

Press the "power on" button on the back of the CopyDisc which will then go through a series of self-tests. The **- Home Menu -** prompt will appear on the CopyDisc's LCD panel within a minute or so.

Adjusting the Printer Position

Your CopyDisc P-55 now needs to be aligned so that when a CD is released into the printer it fits into the correct position in the CD drawer.

1. Switch on your TEAC P-55 printer and CopyDisc autoloader.
2. Open the printer drawer by pressing the **Load/Eject** button on the printer.
3. On the LCD panel on the front of the CopyDisc unit move the > cursor using the arrow keys until it is level with the **Utilities Menu** and press **Enter**. Now scroll down to **Loader Utilities** and press **Enter**.
4. Move the > cursor to **Calibrate** and press **Enter**. The robotic arm re-sets itself.
5. Place a disc onto the Input spindle, move the > cursor to **Insert** and press **Enter**. The robotic arm picks the disc from the Input spindle and places it into the printer CD drawer. The disc should sit on the CD drawer so that the 3 centering pins are in the middle of the disc (see figure F5).

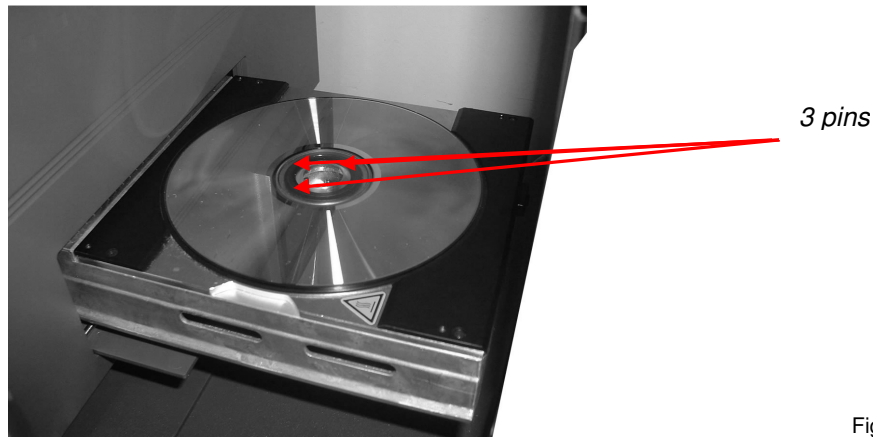


Fig. F5

6. If the disc does sit centrally, the printer position in relation to the CopyDisc unit needs to be adjusted. Gently tap the plate in the direction required to align the printer.
7. Once again, place a disc onto the Input spindle, move the > cursor to **Insert** and press **Enter**.
8. The robotic arm picks and places the disc from the Input spindle and places it into the CD drawer. Continue this process until the CD is placed correctly into the CD drawer.
9. Once the printer plate is in position, tighten the screws on the plate.



Note:

Only tiny movements to the printer plate are required. Use your hand to tap the printer plate into position bit by bit.

Loading the TEAC P-55 Driver

1. Place the TEAC P-55 Driver software CD into your PC's CD-ROM.
2. Select **Start** and **Setting** then open the **Printers** folder.
3. Click the **Add Printer** icon. The **Add Printer Wizard** appears. Click **Next**.
4. Select **Local Printer** and ensure that the box next to **Automatically detect & install my plug & play printer** is unselected.
5. Continue selecting **Next**.
6. In the 'Install Printer Software' screen, click **Have Disk** and browser to your CD-Rom or DVD drive and select the **win 2000** folder. Click **OK**.

7. Select the **TEAC P-55 Disc Label Printer** and continue to select **Next** until you reach the end of the wizard. Click **Finish**.
8. A Hardware Installation warning may appear, click **Continue Anyway**.

The TEAC P-55 print driver will be installed on your PC.

You are now ready to print to your CopyDisc P-55 Platinum via DiscPilot networking software. Refer to section 4 for details.

Appendix G: CopyDisc with Puma On-Disc Printer

This section will provide you with detailed information on how to set up and operate your CopyDisc with Puma combined duplicator fitted with an OptiPrinter Pro inkjet printer.



Note:

Good quality, inkjet printable discs should be used with the Puma On-Disc Printer.



Note:

Your CopyDisc is fitted with a mechanical picker, which enables you to print right to the centre of full-face printable, inkjet discs.

Box Contents

Carefully remove your CopyDisc duplicator and printer from their shipping cartons and verify that all parts are present. If there are missing or damaged parts contact Verity Systems or an authorised partner/reseller immediately to correct any miss-packed or missing parts.

You should find the following:

- Verity Systems CopyDisc duplicator (fitted with printer plate)
- Puma On-Disc Inkjet Printer
- Power Cables x 2 (one for CopyDisc and one for Puma)
- Printer USB Cable (to attach printer to PC if required)
- Serial Connector Cable and Parallel Cable
- Input Basket and Output Spindle
- Black and Colour Ink cartridges
- Quick Start Guide and CD with user manual, printer drive and test image
- CD Label Designer software
- 2 blank inkjet printable CD-Rs
- Warranty Card
- Networking software CDs – **if applicable** (DiscPilot Client/CD label Designer CD, PublisherNET Server CD and Nero software CD)

Attaching your Printer

Your CopyDisc Platinum printer will come with the printer plate attached as shown in Figure E1.



Fig E1

Remove the Puma from its packaging. You will notice that the base of the printer has location holes, which directly mirror the location pins situated on the printer plate.

Carefully position the printer onto the printer plate (see Figure E2) ensuring that the location pins fit snugly into the location holes on the base of printer itself.



Power On

Connect the parallel cable and the serial control cable to the printer (Figure E3). Now connect the respective power cables to the printer and the CopyDisc and connect to the mains.

Press the power on button on the front, right of the printer first followed by the power on button at the back of your CopyDisc. When turning power off, switch off the printer first followed by the CopyDisc.

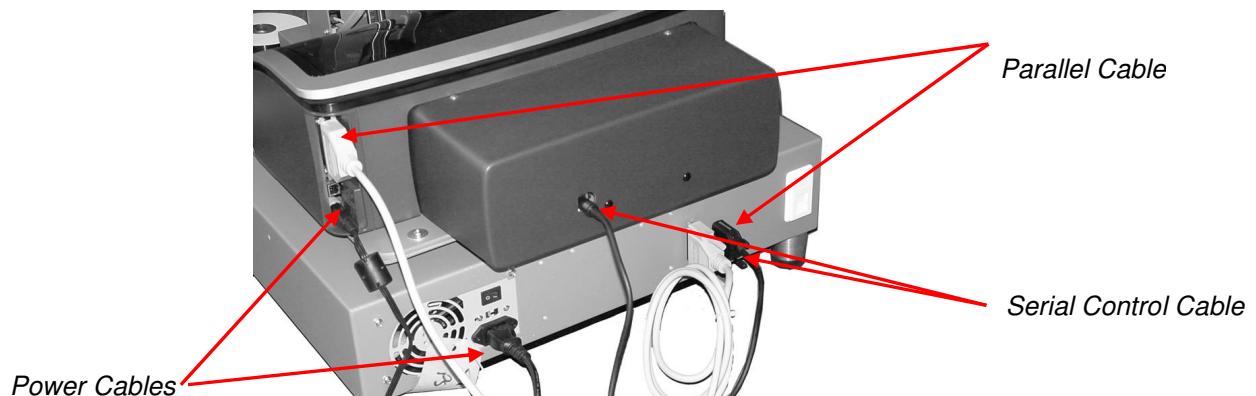


Fig E3

Adjusting the Printer Position

Correct alignment of the Puma on the CopyDisc system is essential to ensure the unit works efficiently. If your system has problems picking up from the OptiPrinter Pro the following procedures should help to solve the problem.



Note:

Lack of accuracy in setting the pick up position will lead to miss-picks and dropped discs.

To ensure accuracy follow these steps:-

7. Have the printer and CopyDisc in a state where there are no jobs running.
8. Scroll down to Utilities using the ▼ key and press ►
9. Use the ▼ key to select Loader Utilities and press ►
10. Use the ▼ key to select 'Input Bin to Printer' and press ►
11. The printer tray will open and a disc will be placed onto the tray.
12. Examine where exactly the disc has been placed on the tray. The disc must be 0.5mm (0.0197") from the 2 front pins on the drawer and be on equal distance from each pin.

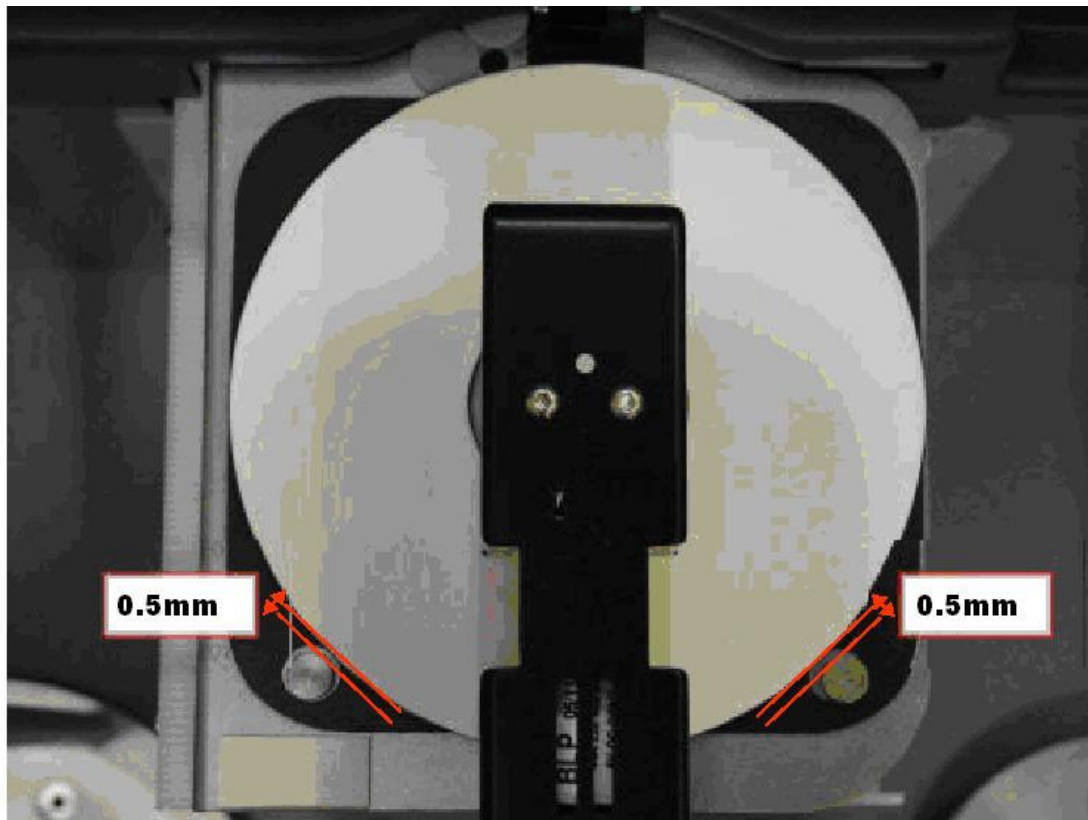


Fig. F4

11. Determine which way the printer needs to move to receive the disc properly.
12. Loosen the retaining screws on the printer plate and make the adjustment (it may help to mark its current position before moving in case it slips).
13. Use the ▼ key to select 'Printer to Output Bin'. The disc will be taken from the printer.
14. Go back to step 4 to check the alignment.
15. Once the printer plate is in position, tighten the screws on the plate.

Fitting the Ink Cartridges

6. Press the Power key to turn on the printer.
7. Open the top cover and lift the print cartridge latch to the open position (figure E5).
8. Slide the print cartridge out of the cradle (figure E6).
9. Remove the tape from the cartridge (figure E7).
10. Hold the cartridge so that the copper strip is on the bottom rear and slide the cartridge firmly into the cradle. Push down the cartridge latch until it snaps shut (figure E8).

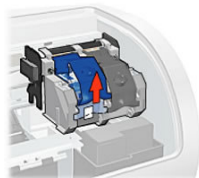


Fig. E5

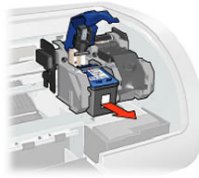


Fig. E6



Fig. E7



Fig. E8

Installing the Printer Drivers on your PC



Note:

Your Puma **should not** be connected to your PC during the initial software installation. If connected, **remove the USB and power cables from the printer**. There may be variations in the following instructions depending on operating system (2000 or XP) and configuration.

11. Place the Printer Driver CD into the CD-ROM drive of your PC. The **Verity_Puma** installation wizard should automatically start.
12. Follow the on-screen instructions, clicking **Next** when prompted. When prompted, click **Install** to begin installation.
13. The **Digital Signature Not Found** message box will appear (figure F9). You will be asked if you wish to continue installation, select **Yes**. In Windows XP, select **Continue Anyway**.
14. On the final screen click **Finish**.
15. Connect the Puma to your PC via the USB cable.
16. Connect the power cable to the back of the Puma and plug into the power supply. Switch on the printer.
17. The **Found New Hardware** box will appear on screen, which will search for the driver. In Windows XP select **No, not at this time** and click **Next**.
18. At the next box, select **Install the software automatically (Recommended)** and click **Next**.
19. If the **Digital Signature Not Found** message box appears again, select **Yes** to continue installation. In Windows XP, select **Continue Anyway**. When prompted, click **Finish**.

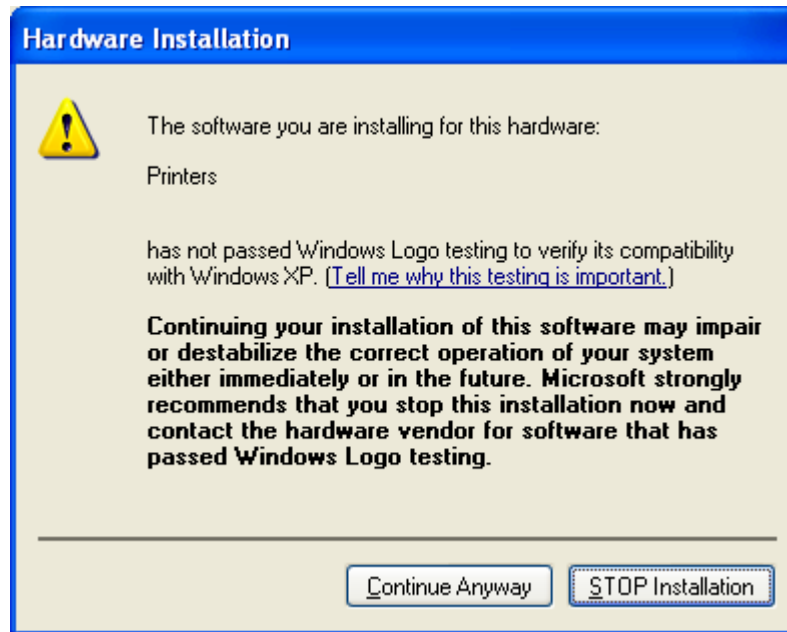


Fig. F9


Note:

The message, which appears above, is merely precautionary from Windows and it is not necessary to stop the installation.


Note:

*If your PC does not recognize the new Puma hardware when you first connect it to your PC, you should load the print driver via the **Add Printer** icon on your Printer settings:*

9. Place the Print Drive CD into your PC's CD-ROM drive.
10. On you PC's desktop, select **Start, Settings** and **Printers**.
11. Double click the **Add Printer** icon and follow the on screen instructions.
12. When prompted, select **Local Port**.
13. When the Wizard asks for the name of the printer, click the *Have Disk* key and navigate to the **enu/drivers/win2k_xp/Puma.inf** file on the CD-ROM and select **Open** and then **OK**.
14. The driver will begin to install on your PC.
15. Whenever prompted click **Next**.
16. When complete, select **Finish** and the Verity Systems Puma print driver icon will appear in your printer settings.

Working with CD Label Designer

Insert the CD Label Designer CD into your CD-ROM and follow the on screen instructions.

Creating a Print File (PRN file) (Standalone)

A PRN file must be created and uploaded onto your CopyDisc in order for it to print onto your CDs. Open CD Label Designer software and create your design. (Refer to the **Help** section or the OptiPrinter Pro manual for full details on how to create images and text). Once you are happy with your design you are ready to create a PRN file.

Select **Print** from the File. Select the **Verity Systems Puma** printer from the list of printers.

You may wish at this stage to calibrate your printers setting (i.e. to alter the print resolution or print area). To do this, select the appropriate, (Setup, Features, Colour) and make any changes. For full details, please refer to the OptiPrinter Pro user manual.

OK any settings you change. Click **OK** to print and you will be asked where you want to save the PRN file and to name the file.

This PRN file can now be copied onto a CD and loaded onto your CopyDisc duplicator and printer (see section 3.4.4.5 Importing a Print Image).

Operating a Networked CopyDisc with Puma

If you have a networked CopyDisc system, you need to install **DiscPilot**. For full instructions on how to install DiscPilot, see the manual included on the DiscPilot CD.

STANDARD TERMS AND CONDITIONS OF SALE

In these conditions "Verity Systems" is Verity Systems Limited, having its registered office at Verity House, 2, Eastern Road, Aldershot, Hampshire, GU12 4TD, UK. And the "Purchaser" is an individual or company with whom Verity Systems contracts.

All orders are accepted by Verity Systems subject to Conditions of Sale set out below.

1. GENERAL

These conditions shall prevail over any terms or conditions, which the Purchaser may seek or have sought to impose. Any conditions in the Purchaser's Order will be binding only so far as they are compatible with these Terms and Conditions and are expressly accepted by a Director of Verity Systems in writing.

2. ERRORS

Clerical errors may be corrected by Verity Systems at any time.

3. PRICES

The prices quoted are Ex Works and exclude Value Added Tax. Any published list price shall be subject to revision without notice according to Verity Systems prices ruling at the time of delivery.

4. SETTLEMENT TERMS

Punctual payment is the essence of the Contract and the Purchaser will pay interest at the rate of 2% per month or part thereof of any overdue payments. Provided that the Purchaser has produced references which are in Verity Systems' opinion are satisfactory Settlement Terms will be net 30 days from delivery. In all other cases payment shall be in advance upon submission by Verity Systems of a pro forma invoice.

5. DELIVERY

All times quoted for delivery are from receipt from the purchaser of a written order to proceed. Unless otherwise agreed in writing any quoted delivery date shall only be an estimate thereof and shall not be essence of the Contract. Whilst all reasonable endeavours will be made to comply with estimated delivery dates Verity Systems does not accept any liability in respect of failure or delay in delivery. Where a Purchaser's Order calls for a number of items Verity Systems reserves the right to deliver all or any as soon as they are available at Verity Systems' premises and the Purchaser shall honour all statements presented in respect of such deliveries in accordance with the Settlement Terms. Notification to the Purchaser by Verity Systems that the goods are available for delivery to an independent carrier or to the Purchaser or his agent shall constitute delivery to the Purchaser. In all cases the carrier acts as Agent of the Purchaser.

6. EXPORT CONTROL

If the goods or components thereof are licensed by the US Government for ultimate destination within the United Kingdom and any other EEC Country then the goods may not be re-exported without the approval of Verity Systems in writing.

7. INSPECTION AND ACCEPTANCE

THE PURCHASER MUST INSPECT THE PRODUCTS as soon as is reasonably practicable after delivery and shall within 3 working days of delivery give notice to Verity Systems in detail of any defect in the Products or of any other complaint which the Purchaser may have in relation to the Products. Upon acceptance of the goods the Purchaser shall be deemed to acknowledge that the goods so accepted conform in all respects with the specification of the goods ordered. If the Purchaser desires to inspect the goods prior to delivery such inspection must be made at Verity Systems' premises and notification of this requirement must be given in writing at the time of placing the order. If upon inspection the goods are approved by or on behalf of the Purchaser such approval shall constitute acceptance of the goods. If no such inspection is made the Purchaser shall be deemed to have accepted the goods when they are delivered to him or his agent or carrier unless the Purchaser gives written notice to the contrary to Verity Systems within three working days of delivery. If the Purchaser fails to give such notice, the Products shall be conclusively presumed to be in all respects in accordance with the contract and free from any defect which would be apparent on reasonable examination and the Purchaser shall be deemed to have accepted the Products accordingly. The Purchaser acknowledges that Verity Systems does not write software comprised in Products sold by it and, accordingly, the Purchaser acknowledges that it is its sole responsibility to check (by the application of appropriate diagnostic software) for the presence of computer viruses in software comprised in Products before such Products are used or disposed of. In the event that the Purchaser establishes to Verity Systems' reasonable satisfaction that the Products are not in accordance with the

contract or are so defective, the Purchaser's sole remedy in respect of such non-accordance or defects shall be limited as Verity Systems may elect to the replacement of the Products or refund of the purchase price or, where sums are owed by the Purchaser to Verity Systems, the issue of a credit note against the return of the Products.

THE PURCHASER MUST REFUSE PARCELS DELIVERED TO HIM IN A DAMAGED CONDITION.

In no circumstances shall Verity Systems be liable to compensate the Purchaser in damages or otherwise for non-delivery or late delivery of the Products or for any loss consequential or otherwise arising from non-delivery or late delivery.

8. CANCELLATION OF ORDER

If at any time the Purchaser cancels an order for goods or services which Verity Systems specifies to be "non-standard", i.e. not detailed on the current price list, Verity Systems shall be entitled to claim as damages an amount equal to 75% of the value of the order. For standard goods or services damages would equate to 50% of the value of the order. These amounts the Purchaser agrees represents a genuine pre-estimate of Verity Systems' loss. Upon the cancellation of any order, Verity Systems shall have the right to realize at its discretion after 60 days all monies, securities or goods pledged with or held by it on behalf of the Purchaser and to apply the proceeds in or towards the satisfaction of such claim for damages and the Purchaser shall have no claim whatsoever against Verity Systems in connection therewith.

9. PASSING OF PROPERTY AND RISK

The goods shall remain the sole and absolute property of Verity Systems as legal and equitable owner until such times as the Purchaser shall have paid to Verity Systems the agreed price. From delivery of the goods the Purchaser acknowledges that he is in possession of the goods solely as bailee for Verity Systems as shall as bailee insure and keep the same insured in the name of Verity Systems in their full reinstatement value in some reputable insurance office and indemnify Verity Systems for any uninsured loss thereof. For the purpose of recovering the goods Verity Systems may enter any premises where the goods are stored or where they are reasonably thought to be stored and may repossess the same. Until such time as the purchaser becomes the owner of the goods he will store them on his premises in a manner, which makes them readily identifiable as the goods of Verity Systems. The Purchaser is licensed by Verity Systems to agree to sell Verity Systems' goods subject to the express conditions that the entire proceeds thereof are held in trust for Verity Systems and are not mingled with other monies or paid into any overdrawn Bank Account and shall be at all times identifiable as Verity Systems monies. The Purchaser is licensed to use the goods in the manufacture of other goods provided that if the goods being the property of Verity Systems are mixed with goods being the property of the Purchaser or are processed with or incorporated therein the product shall be deemed to be the sole and exclusive property of Verity Systems.

If the goods being the property of Verity Systems are mixed with goods being the property of any person other than the Purchaser or incorporated therein the product thereof shall become or shall be deemed to be owned in common with that other person in proportion to the value of the constituent parts therein. The Purchaser is licensed by Verity Systems to agree to sell on the said product subject to the express condition hereinbefore mentioned in relation to the proceeds of sale thereof.

10. SPECIFICATION

All drawings, specifications and particulars of the goods submitted are approximate only. The descriptions and illustrations contained in catalogues, price lists and other advertising of Verity Systems are intended merely to present a general idea of the goods described therein and shall not form part of the Contract. Whilst every effort is made to ensure that the latest specification is available Verity Systems reserves the right to incorporate new features and to supply products which may not be strictly in accordance with the specification agreed upon, provided that any changes in specification shall not materially prejudice the performance of the goods.

11. FORCE MAJEURE

Verity Systems shall not be liable for failure to perform or delay in performance of any contract or for the loss or damage to goods directly or indirectly caused by force majeure to include acts of God, fire, theft, riot, war, embargo, strike, shortage of labour, delays in delivery of material by suppliers, prohibition or export or import, confiscation or any other occurrence (whether or not of a similar nature to those specified) beyond the control of Verity Systems. No consequences of any such event shall give rise to the recession of the Contract unless in the opinion of Verity Systems the contract becomes incapable of performance.

12. WARRANTY

- a) Verity Systems warrants that the goods will be of good quality and that Verity Systems has title to sell the same. Verity Systems' warranty of workmanship (if provided) shall be effective from the date on which the goods were accepted in accordance with Clause 8 and limited to 12 months from dispatch or such period as may be notified ("the warranty period"). During the warranty period Verity Systems will replace, free of charge, any part or parts of the goods which fail to function as a result of faults caused during their manufacture providing always that such faulty goods are returned carriage paid to Verity Systems' premises. The goods when repaired by Verity Systems will then be returned carriage paid to the Purchaser. Verity Systems shall not be liable under this warranty:
- i) where the defect results from the goods being subjected to abnormal usage or where the defect is due to the act, neglect or default of anyone other than Verity Systems
 - ii) for the replacement or repair of the goods or part or parts thereof where such replacement, or repair becomes impossible as a result of force majeure or any other circumstances beyond Verity Systems' control
 - iii) where the goods or any components or parts thereof are the subject of a separate guarantee given by a third party.
 - iv) where failure is caused by abuse or neglect.
- b) The Purchaser acknowledges that if he has not notified to Verity Systems any particular purpose for which the goods are required all express or implied warranties or conditions statutory or otherwise as to quality of or fitness for any particular purpose of the goods are hereby expressly excluded and Verity Systems shall not (except as set out above) be under any liability whatsoever in respect of defects in goods delivered or for any injury, damage or loss resulting from such defects from any cause whatsoever.

13. LEGAL CONSTRUCTION

Except where otherwise stipulated in writing the relations, arrangements and agreements between the parties shall be governed by the laws of England and all disputes which may arise under out of or in connection with any contract between Verity Systems and the Purchaser shall be submitted to arbitration by the London Court of Arbitration in accordance with its Rules for the time being in force. Service of any notices in the course of such arbitration to the address of the Purchaser given in the Contract shall be valid and sufficient. All references in the Terms and Conditions to the masculine gender shall be deemed to include the feminine and neuter genders. Failure or neglect by Verity Systems to enforce at any time any of the provisions hereof shall not be construed a waiver of Verity Systems' rights nor in any way affect the validity of the whole or part of this contract nor prejudice Verity Systems' rights to take subsequent action. The headings of the Terms and Conditions are inserted for convenience or reference only and are not intended to be part of or to affect the meaning or interpretation of any of the terms and conditions of this Contract. In the event that any of these terms, conditions or provisions shall be determined invalid, unlawful or unenforceable it shall be severed from the remaining terms, conditions and provisions which shall continue to be valid to the fullest extent permitted by law.

14. STERLING PROTECTION

Any quoted or listed sterling prices are subject to variation in the rate of exchange between sterling and the currency paid by Verity Systems for whole or major components between the date of the contract and the time of the submission of Verity Systems' invoice to the Purchaser. Verity Systems reserves the right to vary the price so that it accords with the said rate of exchange prevailing at the time of Verity Systems' invoice.

15. DEFAULT

If the Purchaser shall default in the performance of any of its obligations under the Contract Verity Systems shall on giving the Purchaser notice in writing have the right without prejudice to any other rights or remedies to take all or any of the following actions:

- a) cancel all or any part of any discount which might otherwise have been due under the terms of the Contract;
- b) suspend any outstanding delivery of goods or parts thereof until such default shall have been made good;
- c) recover possession of that part of the goods to which the default relates and the Purchaser shall allow Verity Systems free access to his premises to enable Verity Systems to do so.

No waiver or delay in exercise by Verity Systems of its right under this clause shall be deemed to imply acceptance of the default or any subsequent default. If the Purchaser shall become bankrupt, go into liquidation, have a Receiving Order made against him, or carry on his business under a Receiver Verity Systems shall have the liberty without prejudice to any further remedies under the Contract to terminate the contract forthwith by notice in writing to the Purchaser or Liquidator and recover possession of all equipment for which full payment of the contract price has not been received in c. above.

Supplied by:**Verity Systems Ltd.**

2 Eastern Road
Aldershot
Hampshire
GU12 4TD
United Kingdom

Tel: +44 (0) 1252 317000
Fax: +44 (0) 1252 316555
E-mail: sales@veritysystems.com

Verity Systems, Inc.

5441 Merchant Circle, Unit A
Placerville
CA 95667
United States
Toll Free: (800) 642-5151

Tel: (530) 626-9363
Fax: (530) 626-9395
E-mail: ussales@veritysystems.com