



# TECHNICAL MANUAL



**Operating and Maintenance  
Instructions  
for**

**DATAGONE LG  
HARD DRIVE DEGAUSSER**

ZZ201203 / ZZ201204

**VS SECURITY PRODUCTS LTD**

**DATAGONE LG  
Hard drive Degausser**

**OPERATING MANUAL**

PRODUCTION STANDARD

**DATAGONE LG ZZ201203 – 230V 50Hz  
DATAGONE LG ZZ201204 – 115V 60Hz**



**WARNING**

TO AVOID ELECTRIC SHOCK HAZARDS, THE COVER SHOULD ONLY BE REMOVED BY AUTHORISED PERSONNEL

**CAUTION**

IT IS RECOMMENDED THAT MAGNETIC STORAGE MEDIA IS KEPT AT LEAST 1 METRE (3 FEET) FROM THE DEGAUSSER

**IMPORTANT**

THE POWER ON/OFF SWITCH USED ON THIS EQUIPMENT IS NOT AN ISOLATING SWITCH. IT IS RECOMMENDED THAT THIS EQUIPMENT SHOULD BE OPERATED FROM A SEPARATE SWITCHED ISOLATOR.

**COPYRIGHT**

This document is the property of VS Security Products Ltd and it may not be reproduced, copied or exhibited to a third party without the written permission of VS Security Products Ltd.

**VS SECURITY PRODUCTS LIMITED**

17 Pegasus Court  
North Lane  
Aldershot  
Hampshire GU12 4QP  
UK

Tel: +44 (0) 1252 333577  
Fax: +44 (0) 1252 333448  
Email: sales@vssecurityproducts.com

**VS AND ASSOCIATES**

3160 Texas Hill Road  
Placerville  
CA 95667  
USA

Tel: 530-626-6924  
Fax: 530-626-6989  
Email: ussales@vssecurityproducts.com

## SOFTWARE LICENCE

### VS Security Products Ltd - End-User Licence for Software

PLEASE READ THIS DOCUMENT CAREFULLY BEFORE USING THIS SOFTWARE. THIS LICENCE PROVIDES IMPORTANT INFORMATION CONCERNING THE SOFTWARE, PROVIDES YOU WITH A LICENCE TO USE THE SOFTWARE AND CONTAINS WARRANTY AND LIABILITY INFORMATION. BY USING THE SOFTWARE, YOU ARE ACCEPTING THE SOFTWARE "AS IS" AND AGREEING TO BE BOUND BY THE TERMS OF THIS LICENCE AGREEMENT. **IF YOU DO NOT WISH TO DO SO, DO NOT USE THE SOFTWARE.**

#### 1. Terms of Licence

This licence allows you to:

- (a) use the Software on a single computer; and
- (b) make one (1) copy of the Software for back-up purposes.

If you wish to use the Software on more than one computer, you must licence another copy of the Software.

#### 2. Restrictions on Use

Unless VS Security Products Ltd has authorised you to distribute the Software, you shall not make or distribute copies of the Software or transfer the Software from one computer to another. You shall not decompile, reverse engineer, disassemble, include in other software, or translate the Software. You shall not modify, alter, change or otherwise make any modification to the Software or create derivative works based upon the Software. You shall not rent, lease, resell, sub license, assign, distribute or otherwise transfer the Software or this licence. Any attempt to do so shall be void and of no effect.

#### 3. Ownership

This licence provides you with limited rights to use the Software. VS Security Products Ltd retains all ownership, right, title and interest in, to and of the Software and all copies of it. All rights not specifically granted in this licence, including domestic and international copyrights, are reserved by VS Security Products Ltd.

#### 4. Proprietary Markings

VS Security Products Ltd's logos, product names, manuals, documentation, and other support materials are either patented, copyrighted, trademarked, constitute valuable trade secrets (whether or not any portion of them may be copyrighted or patented) or are otherwise proprietary to VS Security Products Ltd. You shall not remove or obscure VS Security Products Ltd's copyright, trade mark or other proprietary notices from any of the materials contained in this package or downloaded together with the Software.

#### 5. Disclaimer of Warranties and Technical Support

The Software is provided to you free of charge and on an "as is" basis, without any technical support or warranty of any kind including, without limitation, any warranty or condition of merchantability, fitness for a particular purpose and non-infringement. SOME JURISDICTIONS DO NOT ALLOW THE EXCLUSION OF IMPLIED WARRANTIES, SO THE ABOVE EXCLUSION MAY NOT APPLY TO YOU. YOU MAY ALSO HAVE OTHER LEGAL RIGHTS WHICH VARY FROM JURISDICTION TO JURISDICTION.

#### 6. Limitation of Liability

VS SECURITY PRODUCTS LTD SHALL NOT BE LIABLE FOR ANY INDIRECT, SPECIAL, INCIDENTAL OR CONSEQUENTIAL DAMAGES OR LOSS, INCLUDING DAMAGES FOR LOSS OF BUSINESS, LOSS OF PROFITS, OR THE LIKE, WHETHER BASED ON BREACH OF CONTRACT, TORT (INCLUDING NEGLIGENCE), PRODUCT LIABILITY OR OTHERWISE, EVEN IF VS SECURITY PRODUCTS LTD OR ITS REPRESENTATIVES HAVE BEEN ADVISED OF THE POSSIBILITY OF SUCH DAMAGES. SOME JURISDICTIONS DO NOT ALLOW THE LIMITATION OR EXCLUSION OF LIABILITY FOR INCIDENTAL OR CONSEQUENTIAL DAMAGES, SO THIS LIMITATION OR EXCLUSION MAY NOT APPLY TO YOU. The limited warranty, exclusive remedies and limited liability set forth above are fundamental elements of the basis of the agreement between VS Security Products Ltd and you. You agree that would not be able to provide the limitations.

#### 7. Term and Termination

This licence agreement is effective until terminated. You may terminate this licence agreement at any other time by destroying all complete and partial copies of the Software in your possession. This licence and your rights hereunder shall automatically terminate if you fail to comply with any provision of this licence. Upon such termination, you shall cease all use of the Software and delete the Software and destroy all copies of the Software and other materials related to the Software in your possession or under your control.

#### 8. General Provisions

- (a) This Agreement shall be governed by and construed in accordance with the laws of England and shall be subject to the jurisdiction of the English Courts.
- (b) This Agreement contains the complete agreement between the parties with respect to the subject-matter hereof, and supersedes all prior or contemporaneous agreements or understandings, whether oral or written.
- (c) All questions, comments or concerns with respect to this Agreement shall be directed to: VS Security Products Ltd, 17 Pegasus Court, North Lane, Aldershot, Hampshire, GU12 4QP, UK ([www.veritysystems.co.uk](http://www.veritysystems.co.uk)).

#### 9. Updates

VS Security Products Ltd may from time to time release new versions of the Software. If you wish to be notified when a new version of the Software is released, you must return the enclosed registration card by email to [sales@vssecurityproducts.com](mailto:sales@vssecurityproducts.com). All new versions or releases which are provided to you shall be considered part of the Software and shall be governed by the terms of this licence agreement.

#### VS Security Products Ltd.

17 Pegasus Court  
North Lane  
Aldershot  
Hampshire  
GU12 4QP  
UK

Tel: +44 (0) 1252 333577  
Fax: +44 (0) 1252 333448

Email: [sales@vssecurityproducts.com](mailto:sales@vssecurityproducts.com)

[www.veritysystems.com](http://www.veritysystems.com)

## CONTENTS

SECTION		PAGE
	List of Contents	
1.	Specification	5
2.	Box Contents	6
3.	Hardware Installation	6
4.	Introduction to the DATAGONE LG Degausser	6
5.	Software Installation	6-9
6.	Operation Guide	9-11
7.	Erasure Logger Software	11-17
8.	Interrogating the Database	17-18
9.	Printing Records	19-21
10.	Supervisor Screen	21-25
11.	Safety Recommendations	26
12.	Maintenance	26-28

**This document refers to Degausser  
Part No ZZ201203 240/220volts 50Hz  
ZZ201204 115volts 60Hz**

## SECTION 1: SPECIFICATION

<b>MEDIA HANDLING</b>	3½", 2½" & 1.8" hard drives. Longitude & perpendicular, DLT, S-DLT, LTO1, 2, 3, 4 & 5; 3480/3490/3490e, 3590, 9840 & T9940 tape; Ultrium & Redwood SD-3 tape & cartridges; Mammoth 1 & 2, 8mm, AIT1 & 2, M2 tape; DDS 1, 2, 3, 4 & 5, DD-2 & DFT-1 & 2
<b>SLOT DIMENSIONS</b>	1.1" x 4.3" (28mm x 110mm)
<b>THROUGHPUT</b>	200 Hard Drives in one continuous session or up to 275 Hard Drives per hour.
<b>DUTY CYCLE CYCLE TIME</b>	50% (Dependant on ambient temperature) 8 seconds typical
<b>OPERATING VOLTAGE</b>	230v (50Hz) or 115v (60Hz) – unit dependant
<b>CURRENT</b>	5 amps typical 230 V 50 Hz 9 amps typical 115 V 60 Hz
<b>TEMPERATURE</b>	5°C (41°F) to 40°C (104°F)
<b>HUMIDITY</b>	10% to 80% non-condensing
<b>MOUNTING</b>	Free standing table top
<b>DIMENSIONS</b>	14.3" x 19.2" x 14.3" (W x H x D) 36cm x 48cm x 36cm
<b>DIMENSIONS (PACKED)</b>	19.5" x 29.1" x 19.5" (W x H x D) 50cm x 74cm x 50cm
<b>WEIGHT</b>	64 lbs (29kg)
<b>PACKED WEIGHT</b>	75 lbs (34kg)
<b>COMPATIBLE OPERATING SYSTEMS</b>	Windows 8, Windows 7, windows Vista, Windows XP SP3 or higher (32-bit only)
<b>CONNECTIVITY</b>	Bi Universal serial Bus. 2.0 Full Speed (USB)



### ENVIRONMENTAL PROTECTION

Waste electrical products should not be thrown away with household waste.  
Please recycle where facilities exist.  
Check with your local authority or retailer for recycling advice.

VS Security Products reserves the right to amend or modify the specifications and design criteria applying to these products

## SECTION 2: BOX CONTENTS

Carefully remove your VS Security Products DATAGONE LG from its shipping carton and verify that all parts are present. If there are missing or damaged parts contact **VS Security Products Ltd** or an authorized distributor immediately.

You should find the following:

- DATAGONE LG Degausser
- Mains Power Lead
- Small Media Adaptor
- Manual / Warranty Card
- CD, including Software, and FTDI Drivers.
- USB Cable
- Optional Barcode Scanner

## SECTION 3: HARDWARE INSTALLATION

**Care should be taken when moving/handling the DATAGONE.**

### 3.1 Unpacking

The DATAGONE is shipped inside a cardboard packing case.

Unpack the degausser carefully by disassembling the packing case and inspect it for signs of physical damage. If damage is apparent, a claim should be filed with the carrier immediately.

Once you have exposed the DATAGONE Degausser, you can carefully remove it from the packing box.

### 3.2 Power Wiring

Power connection is made to the DATAGONE degausser in the form of an IEC type electrical lead (supplied). The user should ensure that their power supply meets those outlined on page five.

## SECTION 4: INTRODUCTION TO THE DATAGONE DEGAUSSER

The **DATAGONE LG** is high energy, hard drive Degausser. They erase Longitudinal Magnetic Recorded (LMR) and Perpendicular Magnetic Recorded (PMR) Hard Disk media with a coercivity of up to 5000 Oersted's and magnetic backup tape media with a coercivity of up to 2800 Oersted's, including DLT, LTO, 4mm and 8mm, DDS and more.

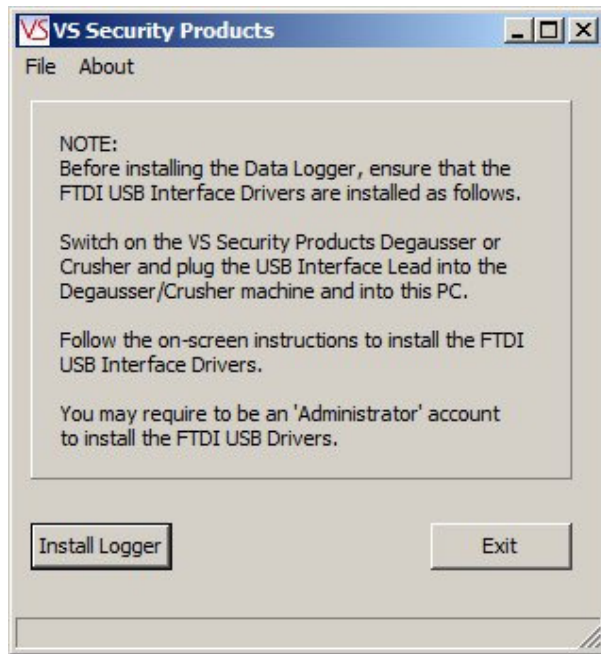
## SECTION 5: SOFTWARE INSTALLATION

The following details the installation procedure for the VSSP Data Logging Software.

### 5.1 Installing the Data Logging Software

Insert the software installation disc into the CD/DVD drive in your PC, and wait for the VSSP software installation screen to appear. If the screen does not appear, open 'My Computer' and double click on your CD/DVD drive icon to launch the disc menu. Click on the VSSP\_Logger\_Auto exe file.

The following screen will then appear regarding FTDI Interface Drivers. Follow the on screen instructions to install the drivers.

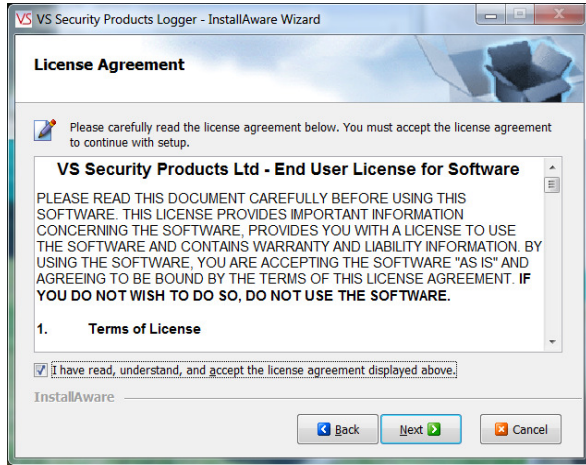


When the FTDI drivers have been installed (If they were not already present)

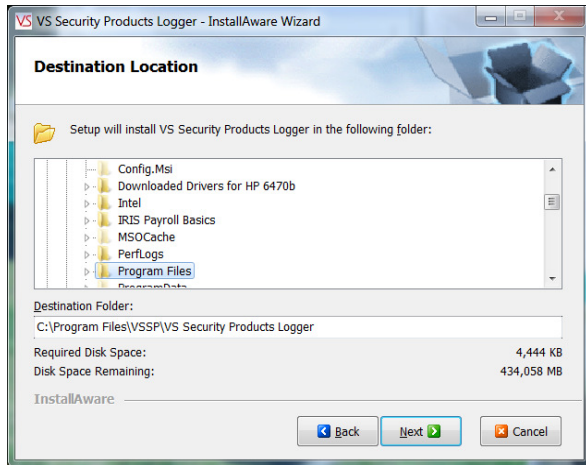
Click the **Install Logger** button.



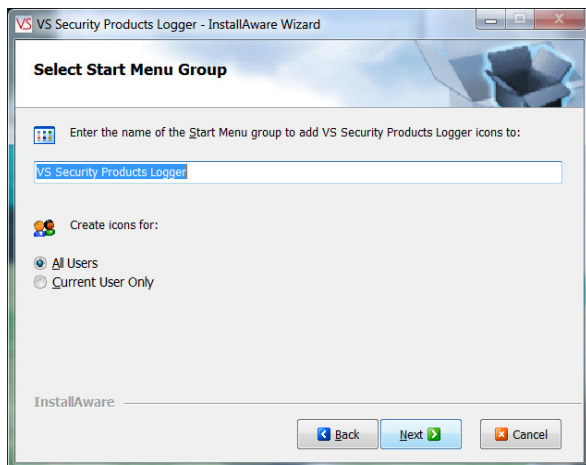
Close all Windows programs that are running and click **NEXT**



Tick the box to confirm you accept the software licence conditions and Click **NEXT**



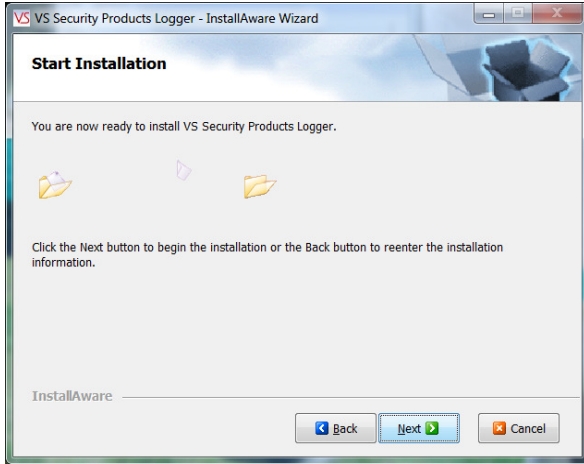
Check the suggested destination is acceptable and Click **NEXT**.



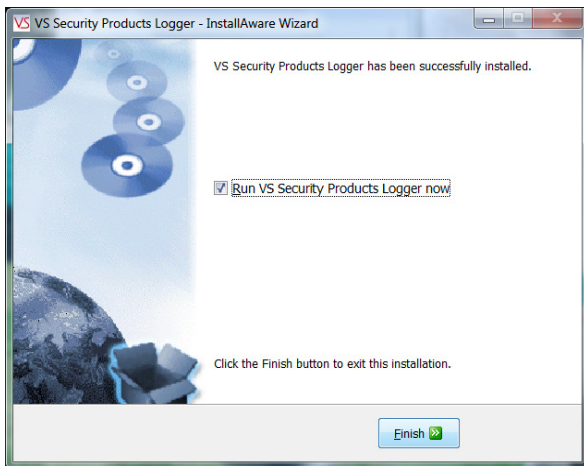
Select Number of Users and Click **NEXT**.



Click **NEXT** to start the Installation.



Click **FINISH** to complete the installation.



## SECTION 6: OPERATION GUIDE

The DATAGONE LG can be operated with or without the Erasure Logging as the customer wishes.

### 6.1 Operation without Erasure Logging

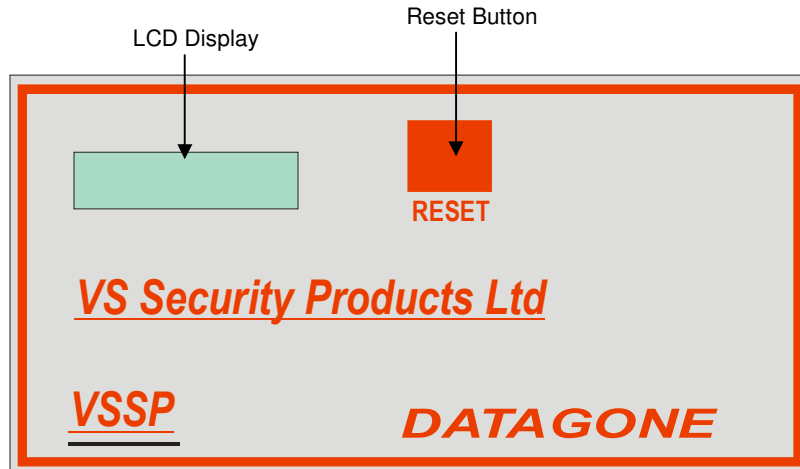
#### General

The DATAGONE is a bench mounted, chamber degausser, making operation safe, effective and simple for anyone. Operators simply “post” the media into the aperture on one side of the unit and wait for the media to exit the aperture on the opposing side of the degausser. The powerful degaussing magnetic field is automatically activated by internal sensors detecting the presence of media which, when the degauss field has decayed, is then released to exit the degausser. The entire process takes just 8 seconds. The processor controlled DATAGONE continuously monitors the operation ensuring that the erasure cycle is completed. The operator is immediately alerted to any interruptions in the erasure cycle on the LCD control panel.

After degaussing hard drives should not be reused as they are stressed in the erasure process and parts can be damaged.

Backup tapes cannot be used after erasure as the control track may be erased in the degaussing process

## Control Panel



The DATAGONE degausser has been carefully engineered for convenience and simplicity of operation. As such an LCD and push button are all that is required. The features provided are outlined below:

### Power Indicator

The LCD is used as a power indicator and will illuminate whenever power is applied. The power switch is part of the IEC power connector module mounted on the rear panel.

### Reset Button

Once you have placed media in the unit the degauss cycle will automatically start. If the degauss cycle is interrupted and the media fails to eject the reset button should be used to eject the media and reset the degauss cycle. The user should then attempt a repeat erasure. The LCD panel will display the progress, completion of the cycle and total number of degauss cycles completed.

If the LCD repeatedly indicates a failure you should contact your nearest VS Security Products support department for further assistance.

#### 6.1.1 Erasure of Hard Drives and Large Backup tapes LTO, DLT, 3480 series.

1. Connect the unit to the power supply
2. Activate the power button on the rear of the unit.
3. Once the unit is ready, gently slide the hard drive into the aperture on the left hand side of the degausser.

**NOTE; Hard drives are manufactured with the disc mounted at one end of the assembly and it is this end that should be leading when inserted into the degausser. This ensures the hard drive is perfectly positioned in the degauss field.**

4. Once the degauss cycle is complete, the hard drive will emerge from the degausser on the right hand side.

#### 6.1.2 Erasure of 2.5" & 1.8" Hard Drives and small media 4 and 4mm cassettes etc

1. To erase small hard drives 2.5" & 1.8" and also small media 8mm cassettes etc. they should be placed in the Small Media Carrier supplied with your DATAGONE.
2. Connect the unit to the power supply
3. Once the unit is ready, gently slide the Small Media Carrier into the aperture on the left hand side of the degausser.
4. Once the degauss cycle is complete, the Small Media Carrier with the hard drive will emerge from the degausser on the right hand side.

## ERROR MESSAGES

If the DATAGONE is not performing correctly the following error messages may be displayed. To validate the message switch the unit off and the on again using the power switch on the rear of the unit.

### 'START UP ERROR'

### 'EXIT SENSOR TRUE'

If this message is displayed the Input optical sensor may be contaminated with dust or dirt. To resolve this problem the Input sensor will need to be cleaned. Please refer to maintenance section 12.1.

### 'EJECT ERROR'

### 'SENSOR 1 JAMMED'

If this message is displayed the output optical sensor may be contaminated with dust or dirt. To resolve this problem the sensors will need to be cleared. Please refer to maintenance section 12.2.

## 6.2 Operation with Erasure Logging

When erasure logging is required simply connect the degausser to a PC or laptop and open the logging program.

This will log all the information related to the erasure and provide a printed report if required. The information logged includes details of the: degaussing company (including the operator and supervisor); media owner; degausser machine type; serial number, part number and size of the Hard Drive or Tape. Information is entered onto the software via keyboard or optional barcode scanner to speed up the data entry if required.

When the logging program has been opened on the PC and the DATAGONE are connected, the operator simply clicks on the "Find Machine" button for all the unit details to be automatically entered into the log including, model, serial number and firmware version. The DATAGONE display will show it is in remote mode controlled by the PC.

Further data regarding operator, customer and media is then entered via keyboard (or optional barcode scanner) before the Hard Drive or Tape is slid into the aperture on the left hand side of the degausser.

In the remote mode the tape will travel until it reaches the erase position.

The erasure is commenced by clicking the "Destroy" button on the screen which activates the charging of the powerful degaussing magnetic field.

A window opens on the screen showing the progress of the degaussing cycle. When the display shows the degauss cycle is complete the gate opens and the media exits the degauss chute on the left hand side of the unit.

**The entire process takes just 8 seconds.** Throughout the whole erase cycle the on-board processor monitors the erase procedure ensuring that it is completed correctly. The operator is immediately alerted to any interruptions in the cycle by messages on the screen.

The lower portion of the screen now shows all the details of the erasure including Date, Time, Media Serial Number, Capacitor Voltage, Magnetic Gauss Field and confirmation that the media was degaussed successfully. If this data is highlighted and the print button pressed all the details on the screen along with all the data entered will be printed as a report. As new media is erased the details will be added to the Media Processed Log in the lower half of the screen. By highlighting erase records, the logs of one or more can be printed as required.

There is a Supervisor Section in the Software which is Password protected. This allows the Supervisor to decide which fields are required and which fields must be completed by the Operator. The log record is stored on the PC and can be archived at any time or exported as a .csv file.

After degaussing, hard drives should not be reused as they are stressed in the erasure process and parts can be damaged.

Backup tapes cannot be used after erasure as the control track may be erased in the degaussing process

To use the degausser without the Data Logging Software disconnect the USB Cable and reboot the degausser.

## SECTION 7: ERASURE LOGGER SOFTWARE

### Overview

The VSSP Data Logger is a Microsoft © Windows application program that allows users to automatically log the erasing or destruction of media by VSSP Degaussers and Crusher machines. It is connected to the Degausser or Crusher via a USB Cable. Degaussing or Crushing can be started from the program by clicking the 'Destroy' button.

When the Degaussing or Crushing is complete, the program collects destruction data from the machine and logs the data in a database.

**MEDIA MANAGEMENT INFORMATION REPORT** VS Security Products

**Processing Company**  
 Company Name: VSSP, Operator: Victoria, Supervisor: David, Degaussing on Site: Aldershot [Clear]

**Media Owner**  
 Company Name: Voller Ltd, Department: IT [Clear]

**Media Information**  
 Type: Tape, Serial No.: [ ], Capacity: [ ], Security Classification: [ ], Remarks: [ ]

**Degausser/Crusher Details**  
 Date: 19/06/2014, Time: 16:31:15, Degausser/Crusher: Degausser, Model: DataGauss, Serial No.: 14060428, Firmware Version: 1.7, Cycles: 10

[Resume] [Print] **DESTROY**

**Media Processed**

Record	Date	Time	Media SN	Capacitor Voltage	Magnetic Field Gauss	Degaussed/De
4	19/06/2014	16:30:41	22322-90	420	19982	Degaussed
3	19/06/2014	16:30:03	830002297	420	19982	Degaussed
2	19/06/2014	16:26:31	533-554-221	420	19982	Degaussed
1	19/06/2014	16:26:05	3822-44-55	420	19982	Degaussed

Information about the processing company, the media owner and the media can be entered in the data boxes on the main screen. This information is stored in the database together with the media destruction information when the media destruction is completed.

It is possible to interrogate the database to retrieve the destruction information record. This record or a number of records can be printed out using any printer attached to the PC including network printers.

## 7.1 Logger Operation

### Starting the Logger

To start the logger double click on the program icon or select the program from the programs list and click on the program title.

**MEDIA MANAGEMENT INFORMATION REPORT** VS Security Products

**Processing Company**  
 Company Name: [ ], Operator: [ ], Supervisor: [ ], Degaussing on Site: [ ] [Clear]

**Media Owner**  
 Company Name: [ ], Department: [ ] [Clear]

**Media Information**  
 Type: HDD, Serial No.: [ ], Capacity: [ ], Security Classification: [ ], Remarks: [ ]

**Degausser/Crusher Details**  
 Find Machine: [ ], Date: 19/06/2014, Time: 16:51:08, Degausser/Crusher: [ ], Model: [ ], Serial No.: [ ], Firmware Version: [ ], Cycles: [ ]

[Resume] [Print] **DESTROY**

**Media Processed**

Record	Date	Time	Media SN	Capacitor Voltage	Magnetic Field Gauss	Degaussed/De

The first time the program is started the Media Processed box will be empty. This is because the database contains no records.

Media Processed						
Record	Date	Time	Media SN	Capacitor Voltage	Magnetic Field Gauss	Degaussed/De:

Also the Degausser/Crusher machine details will be blank. This is because the logger is not connected to a machine yet.

**Degausser/Crusher Details**

Find Machine

Date

Time

Deguasser/Crusher

Model

Serial No.

Firmware Version

Cycles

### 7.2 Connecting to a Machine

- 1) Plug one end of the USB lead into the VSSP Degausser or Crusher machine.
- 2) Plug the other end of the USB lead into a USB port on the computer that the VSSP Logger program is running on.
- 3) Turn the Degausser machine on.

**NOTE:** If this is the first time this machine has been connected to this computer, there may be a delay as the USB drivers are installed. There may also be various dialog boxes displayed to the user whilst the USB driver install is being carried out and the user may have to confirm that the driver installation should proceed. The USB interface is an FTDI device and there may be references to the FTDI driver.

If you are not clear on the driver install process, get a member of your IT support team to help.

- 4) When the FTDI USB driver has installed, click the 'Find Machine' button on the VSSP Logger main screen.

**Degausser/Crusher Details**

Find Machine

Date

Time

Deguasser/Crusher

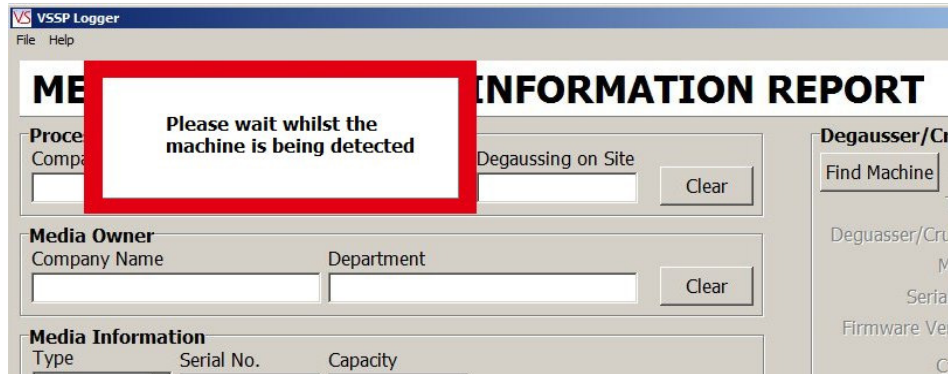
Model

Serial No.

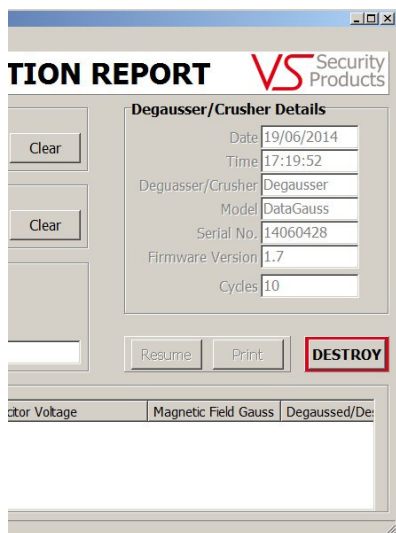
Firmware Version

Cycles

This will cause the logger to look for a VSSP machine:



When the machine has been located, the machine details are displayed in the Degausser/Crusher details box.



**NOTE:** The 'DESTROY' button is now enabled.

The current date and time which are read from the computer are displayed in the machine details along with the following machine data:

- The type of machine (Degausser or Crusher)
- The machine Model Name (in the above example 'DataGauss')
- The machine Serial Number (in the above example 14060428)
- The machine firmware version (in the above example 1.7)
- The number of 'cycles' (e.g. degaussing or crushing operation) the machine has executed (in the above example 10)

### 7.3 Data Entry

Before an item of media can be degaussed or crushed, various data fields must be filled out.

**NOTE:** Not all data fields may be mandatory (e.g. they can be left blank), this depends upon the settings the supervisor has made for the logger.

**NOTE:** Not all data fields may be displayed. This depends upon the settings the supervisor has made for the logger.

In the example below, all the data fields are displayed and all have text completed:

Processing Company			
Company Name	Operator	Supervisor	Degaussing on Site
VSSP	Victoria	David	Aldershot
Clear			

Media Owner	
Company Name	Department
Dell	Engineering
Clear	

Media Information			
Type	Serial No.	Capacity	Part Number
HDD	32598-997	120GB	GX119TY0
Security Classification	Remarks		
Secret	From Server Rack		

**NOTE:** When entering data, the 'Tab' key will cause the cursor to skip to the next data entry box.

In normal use the data in the 'Processing Company' panel and the 'Media Owner' panel is retained after each instance the 'DESTROY' button is clicked and media is destroyed. However, the data in the 'Media Information' panel is cleared every time the 'DESTROY' button is clicked and media is destroyed.

The 'Clear' button in the 'Processing Company' panel and the 'Media Owner' panel can be used to clear all the entries in the panel if required.

## **Bar Code Scanner**

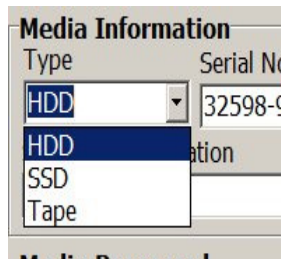
If the bar code scanner has been installed, it can be used to enter bar code data such as serial numbers directly into the relevant data entry box. So, if you wanted to read a bar code serial number into the 'Serial No' data entry box, first ensure that the cursor is in the box (either click in the box with the mouse or use the 'Tab' key to move the cursor to the box).

Then point the Bar Code Scanner at the bar code and press the 'Read Trigger' on the scanner. When the bar code scanner has scanned the bar code the data will be automatically inserted in the box.

**NOTE:** The bar code scanner can be used to enter data into any of the data entry boxes.

## **Media Type**

The 'Media Type' box has a drop down list which is revealed by clicking on the down arrow on the right of the box.



Media Information	
Type	Serial No
HDD	32598-9
HDD	ation
SSD	
Tape	

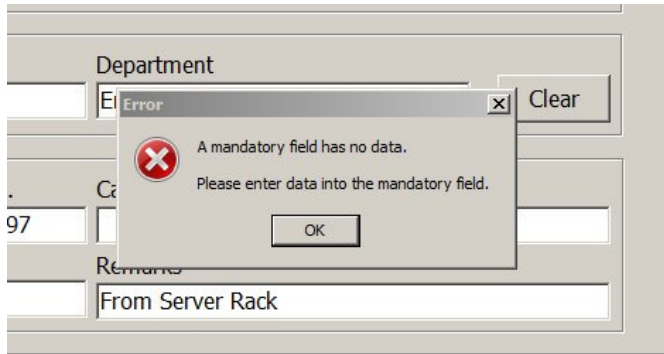
Select the required 'Media Type' by clicking with the mouse on one of the three entries (HDD, SDD or Tape).

**NOTE:** All the information entered in the data boxes will be stored in the database media destruction record together with machine details, the time and date of destruction and the destruction data returned from the machine.

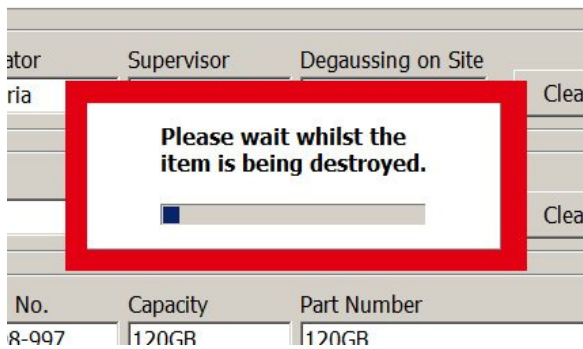
## **7.4 Destroying Media**

When the required data has been entered in the data boxes, the user can click on the 'DESTROY' button to destroy the media.

**NOTE:** If one or more of the 'mandatory' data entry boxes (as defined by the supervisor) is blank, then the following warning message will be displayed and the destruction will not start.



When all the relevant data boxes have entries, destruction will commence and the following screen is displayed:



When the destruction process has completed, the destruction data is shown in the 'Media Processed' box:

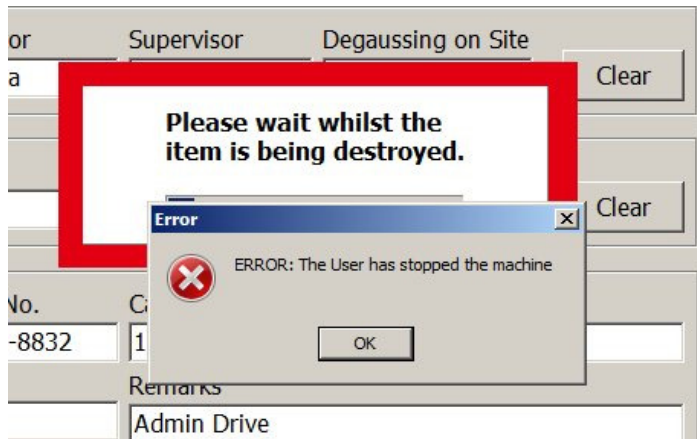
Media Processed						
Record	Date	Time	Media SN	Capacitor Voltage	Magnetic Field Gauss	Degaussed/De:
1	19/06/2014	17:58:01	32598-997	420	19982	Degaussed

The data shown in the 'Media Processed' box is a 'snapshot' of the data record and shows the key data:

- Record Number
- Date of Destruction
- Time of Destruction
- Media Serial Number
- Degausser Capacitor Voltage
- Degausser Magnetic Field Gauss
- Result – Degaussed

**If there was an error during destruction then the error dialog box will be displayed:**





To clear the error dialog box, click the 'OK' button.

The 'Media Processed' box will now show that the destruction failed:

Media Processed						
Record	Date	Time	Media SN	Capactor Voltage	Magnetic Field Gauss	Degaussed/Destroyed
2	19/06/2014	18:06:12	66554-8832	0	0	FAILED - User Stop
1	19/06/2014	17:58:01	32598-997	420	19982	Degaussed

## 7.5 Closing the Logger



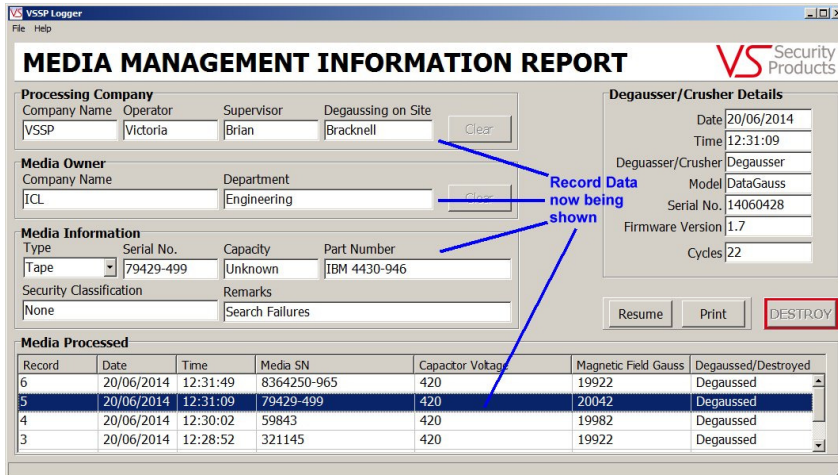
## SECTION 8: INTERROGATING THE DATABASE

### 8.1 Selecting Records

To select a record to be viewed, click on the record to be viewed in the 'Media Processed' List.

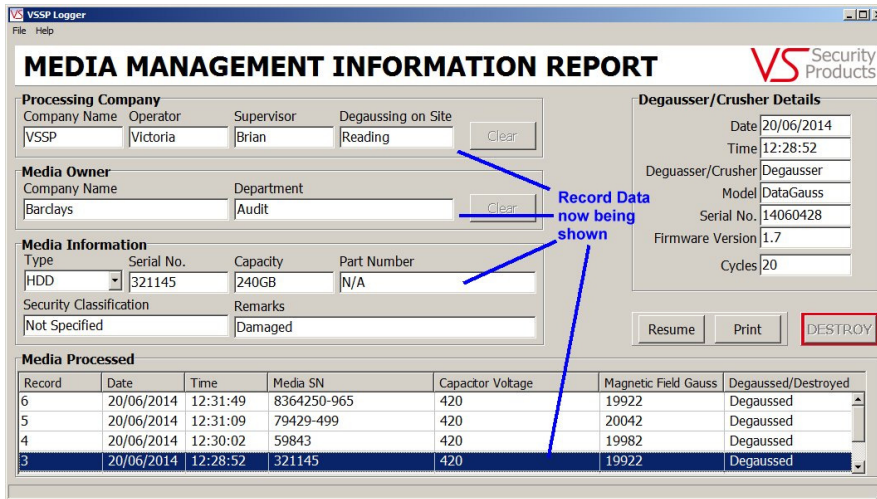
Media Processed						
Record	Date	Time	Media SN	Capactor Voltage	Magnetic Field Gauss	Degaussed/Destroyed
6	20/06/2014	12:31:49	8364250-965	420	19922	Degaussed
5	20/06/2014	12:31:09	79429-499	420	20042	Degaussed
4	20/06/2014	12:30:02	59843	420	19982	Degaussed
3	20/06/2014	12:28:52	321145	420	19922	Degaussed

The record will then be highlighted and the record data shown in the data entry fields above.



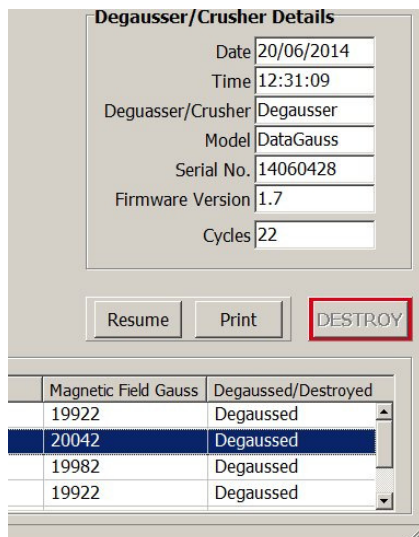
**NOTE:** The 'DESTROY' button is now disabled.

The above can be repeated for each record that is to be viewed.

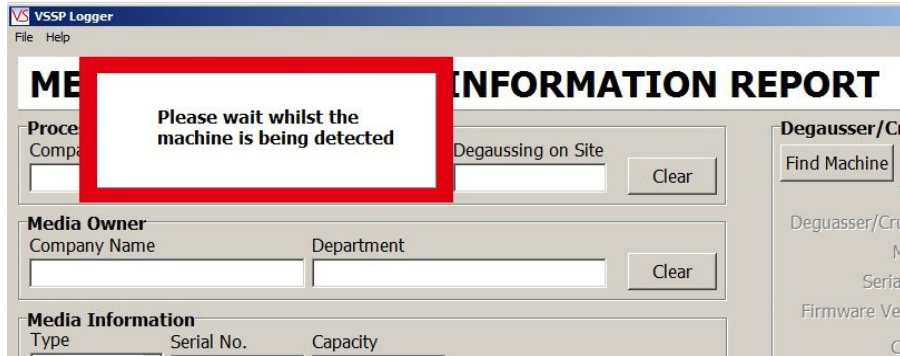


## 8.2 Resuming Destruction after Interrogation

When the database records are being interrogated the 'DESTROY' button is disabled. To enable the button, click the 'Resume' button.



This will then cause the machine to check that the VSSP machine is still connected:



When the VSSP machine is located, the 'DESTROY' button will be enabled.

**NOTE:** Any 'Processing Company' and 'Media Owner' data entry boxes that had data entered prior to interrogating the database will have that data re-entered into them when the 'Resume' button is pressed.

## SECTION 9: PRINTING RECORDS

### 9.1 Selecting a Record to Print

To select a record to be printed, click on the record to be printed in the 'Media Processed' List.

Record	Date	Time	Media SN	Capactor Voltage	Magnetic Field Gauss	Degaussed/Destroyed
6	20/06/2014	12:31:49	8364250-965	420	19922	Degaussed
5	20/06/2014	12:31:09	79429-499	420	20042	Degaussed
4	20/06/2014	12:30:02	59843	420	19982	Degaussed
3	20/06/2014	12:28:52	321145	420	19922	Degaussed

The record to be printed will then be highlighted. Now click the 'Print' button, the normal print dialog box will be displayed. Select the printer to which the record is to be sent, set the number of copies required and click OK. The Record Data is now sent to the printer.

**Media Destruction Record**

**Company**

Name: VSSP  
 Operator: Victoria  
 Supervisor: Brian  
 Degaussing on Site: Yes

**Media Owner**

Company Name: ICL Engineering  
 Department: Engineering

**Media Information**

Type: HDD  
 Serial Number: 79429-499  
 Capacity: Unknown  
 Part Number: IBM 4430-946  
 Security Classification: None  
 Remarks: Search Failures

**Degausser/Crusher Details**

Date: 20/06/2014  
 Time: 12:31:09  
 Degausser/Crusher: Degausser  
 Model: Datagone  
 Serial Number: 14060428  
 Firmware Version: 1.7  
 Number of Cycles: 22

Destruction Details:  
 Capacitor Voltage: 420  
 Magnetic Field Gauss: 20042  
 Result: Degaussed

-----  
 The date and time of the printing is stated at the top of the record page.

**NOTE:** The line spacing of print used can be set by the supervisor.

**9.2 Selecting Multiple Print Records**

The printing of multiple records can be achieved by left clicking the mouse on the first record required, holding the left click button down and dragging the mouse down to the last record to be printed. This will highlight all the records between the first and last selected.

Record	Date	Time	Media SN	Capacitor Voltage	Magnetic Field Gauss	Degaussed/Destroyed
6	20/06/2014	12:31:49	8364250-965	420	19922	Degaussed
5	20/06/2014	12:31:09	79429-499	420	20042	Degaussed
4	20/06/2014	12:30:02	59843	420	19982	Degaussed
3	20/06/2014	12:28:52	321145	420	19922	Degaussed
2	20/06/2014	12:28:02	35-3928-335	420	19982	Degaussed
1	20/06/2014	12:27:00	35-3928-874	420	19982	Degaussed

Alternatively, highlight the first record to be printed, hold the shift key down and select the last record to be printed. This will cause all records in between to be printed.

If you require printing multiple records that are not sequential, click the first record to be printed, hold the Control (Ctrl) key down and click the individual records to be printed.

Record	Date	Time	Media SN	Capacitor Voltage	Magnetic Field Gauss	Degaussed/Destroyed
5	20/06/2014	12:31:09	79429-499	420	20042	Degaussed
4	20/06/2014	12:30:02	59843	420	19982	Degaussed
3	20/06/2014	12:28:52	321145	420	19922	Degaussed
2	20/06/2014	12:28:02	35-3928-335	420	19982	Degaussed
1	20/06/2014	12:27:00	35-3928-874	420	19982	Degaussed

When you have selected the records to be printed, click the 'Print' button, the normal print dialog box will be displayed. Select the printer to which the record is to be sent, set the number of copies required and click OK. The Record Data is now sent to the printer.

**NOTE:** Each record is printed on a separate page.

### 9.3 Resuming Destruction after Printing

When the database records are being printed the 'DESTROY' button is disabled. To enable the button, click the 'Resume' button.

This will then cause the machine to check that the VSSP machine is still connected:

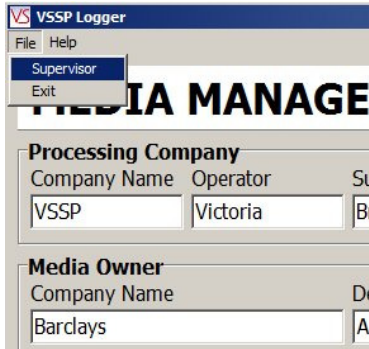
When the VSSP machine is located, the 'DESTROY' button will be enabled.

**NOTE:** Any 'Processing Company' and 'Media Owner' data entry boxes that had data entered prior to printing will have that data re-entered into them when the 'Resume' button is pressed.

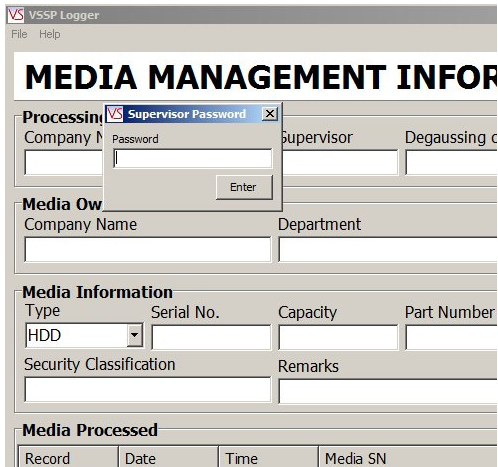
## SECTION 10: SUPERVISOR SCREEN

### 10.1 Supervisor Password

To show the 'Supervisor' screen, click on the 'File' menu and select 'Supervisor'.



This 'Password' screen will then be displayed.



To enter the 'Supervisor' screen, the correct password must be entered.

The default password is: **password**

Note this is all lower case.

The password can be changed in the supervisor screen.

**NOTE: If supervisor password has been changed, please make a note of it. Once changed it cannot be reset to the default password even if the program is un-installed and re-installed.**

If the correct password is entered, the supervisor screen will be displayed.

**VSSP Logger - Supervisor**

DISPLAYED and MANDATORY RECORDS - Tick the box to cause the record to be Displayed and/or to be Mandatory

**Degaussing Company Records**

Displayed

Company Name     Operator     Supervisor     Degaussing on Site

Mandatory

Company Name     Operator     Supervisor     Degaussing on Site

**Media Owner Records**

Displayed

Company Name     Department

Mandatory

Company Name     Department

**Media Information Records**

Displayed

Type     Serial Number     Capacity     Part Number

Security Classification     Remarks

Mandatory

Type     Serial Number     Capacity     Part Number

Security Classification     Remarks

**Equipment Records**

Displayed

Degausser/Crusher     Model     Serial Number     Firmware Version     Cycles

Archive Log File    Password    Printer Line Spacing

Archive    Set Password     70    Set this between 70 and 100.    Close

## 10.2 Supervisor Screen

The supervisor screen has sections for each of the data entry panels:

The screenshot shows the 'VSSP Logger - Supervisor' window. At the top, it says 'DISPLAYED and MANDATORY RECORDS - Tick the box to cause the record to be Displayed and/or to be Mandatory'. Below this are four main sections, each with a 'Displayed' and 'Mandatory' sub-panel. The 'Data Entry' panels are highlighted with red boxes: 'Degaussing Company Records', 'Media Owner Records', and 'Media Information Records'. The 'Displayed' sub-panels are highlighted with green boxes, and the 'Mandatory' sub-panels are highlighted with blue boxes. Each sub-panel contains a list of fields with checkboxes. The 'Equipment Records' section is also visible at the bottom. At the very bottom, there are controls for 'Archive Log File', 'Password', and 'Printer Line Spacing'.

The 'Data Entry' panels (highlighted by Red boxes) are as follows:

- Degaussing Company Records
- Media Owner Records
- Media Information Records

Each 'Data Entry Panel' has two sub panels:

the 'Displayed' sub panel (highlighted by Green boxes)

the 'Mandatory' sub panel (highlighted by Blue boxes).

Each 'Displayed' and 'Mandatory' sub panel has a number of 'Tick Boxes' that correspond to the Data Entry Boxes on the Logger main screen.

On the 'Displayed' sub panel, a tick box with a tick in it will cause the corresponding Data Entry Box to be displayed on the Logger main Screen. If the Tick Box is not ticked, then the corresponding Data Entry Box will not be displayed on the Logger main Screen. This allows the supervisor to specify exactly which Data Entry Boxes are to be displayed on the Logger main screen.



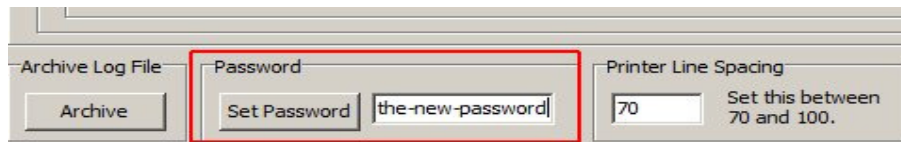
On the 'Mandatory' sub panel, a tick box with a tick in it will cause the corresponding Data Entry Box to be 'Mandatory' e.g. it must contain some data prior to the 'Destruction' button being clicked. If the Tick Box is not ticked, then the corresponding Data Entry Box is not 'Mandatory' and does not have to contain data prior to the Destruction button being clicked. This allows the supervisor to specify exactly which Data Entry Boxes must contain data on the Logger main screen prior to destruction taking place. The 'DESTROY' button is inhibited until all 'Mandatory' Data Entry Boxes have data.

The 'Equipment Records' panel allows the supervisor to specify which equipment records are displayed on the Logger main screen. If a particular record tick box is ticked, the record will be displayed on the main screen. If a particular record tick box is not ticked, the record will not be displayed on the main screen.

### 10.3 Setting the Password

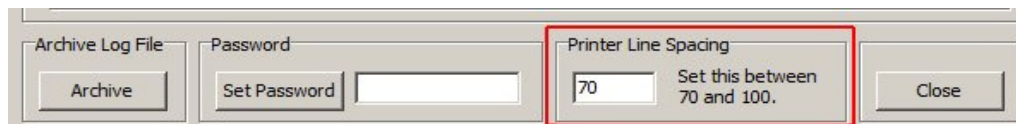
**NOTE: When supervisor password has been changed, please make a note of it. Once the password has been changed it cannot be reset to the default password even if the program is un-installed and re-installed.**

To change the supervisor password, enter the new password into the data entry box to the right of the 'Set Password' button and then click the 'Set Password' button.



### 10.4 Printer Line Spacing

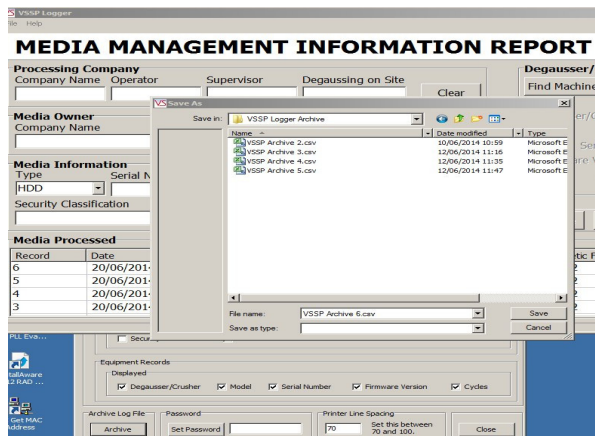
The 'Printer Line Spacing' setting allows the lines on the printed records to be adjusted. If the lines on the printer are too close together, increase the value of the line spacing set in the data entry box. Most printers will require a value of about 70; some printers require a higher value.



### 10.5 Database File Archive

#### Database File Archive

The 'Archive Log File' button allows the supervisor to 'Archive' (e.g. store) the current log file, this also causes a new empty log file to be created. Clicking the button will display a standard Windows Save File dialog box. The supervisor can then choose a location (e.g. drive and/or folder) to store the archive file. The supervisor can also name the file as required.



The file name can be defined by the supervisor, however, it is recommended that the file extension is **.csv** as the file format is a **comma separated variable** file and choosing a **.csv** file extension allows suitable programs (such as a spreadsheet) to automatically open the file.

## 10.6 Archive File Format

The archive file format is a **comma separated variable** file. Each field in the record is separated (de-limited) from the next field by a comma. The fields contain alpha numeric text. A comma is not allowed within a field.

The fields in the record are as follows:

Field	Contents
01	Record Number (Numeric starting at 1)
02	Date
03	Time
04	Machine Type
05	Machine Model
06	Machine SN
07	Machine FW
08	Machine Number of Cycles
09	Company Name
10	Operator
11	Supervisor
12	Site
13	Media Owner
14	Media Department
15	Media Type
16	Media Info SN
17	Media Info Capacity
18	Media Info PN
19	Media Info Class
20	Media Info Remarks
21	Capacitor Voltage (Volts)
22	Magnetic Field Strength (Gauss)
23	Result (Degaussed, Crushed, Failed etc.)

## SECTION 11: SAFETY RECOMMENDATIONS

**It is recommended that people with any form of heart pace-makers or implants etc. avoid close proximity to any equipment of this type without first seeking appropriate medical advice.**

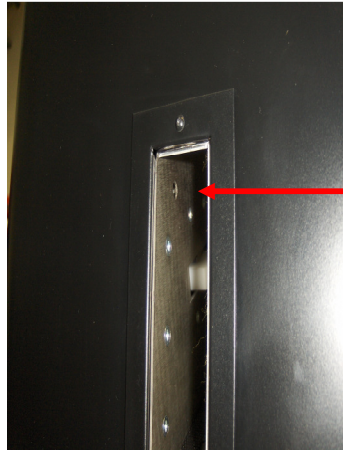
**Operators of the DATAGONE Degausser should ensure they remove any wrist watches prior to using the unit, and that any credit cards or other magnetic devices are placed out of range.**

## SECTION 12: MAINTENANCE

**The DATAGONE Degausser contains extremely high electrical voltages and currents. For safety reasons, VS Security Products Ltd does not recommend that the covers be removed by anyone other than trained VS Security Products technicians.**

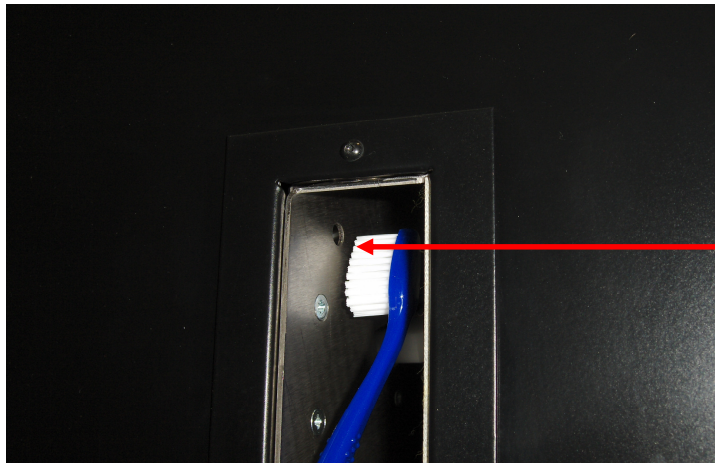
### 12.1 Cleaning the Input Optical Sensor

The Input Sensor is an optical device that looks across the degauss chute to detect the media when it enters the unit. If the media is dusty or the unit is used in a dusty environment the sensor can become contaminated and not see the media. This will result in the unit exhibiting a fault and the message 'START UP ERROR EXIT SENSOR TRUE' being displayed on the LCD.



**INPUT SENSOR**

The sensor is recessed 5mm (0.2") so a small brush will be required to clean it. A tooth brush is an ideal for this purpose. Press the brush over the hole so some of the bristles go through the hole shown above and clean the sensor. The other half of the sensor is on the side of the chute directly opposite the one shown in the Photograph above and should be cleaned in the same way.



**INPUT SENSOR**

## **12.2 Cleaning the Output Optical Sensor**

The Output Sensor is an optical device that looks across the degauss chute to detect the media when it exits the unit. If the media is dusty or the unit is used in a dusty environment the sensor can become contaminated and not see the media. This will result in the unit exhibiting a fault and the message 'EJECT ERROR SENSOR 1 JAMMED' being displayed on the LCD.



The sensor is recessed 5mm (0.2") so a small brush will be required to clean it. A tooth brush is an ideal for this purpose. Press the brush over the hole so some of the bristles go through the hole shown above and clean the sensor. The other half of the sensor is on the side of the chute directly opposite the one shown in the Photograph above and should be cleaned in the same way.

### **12.3 Cleaning the Degauss Chute**

Media and hard drives that are dusty should be brushed off to remove loose dust and dirt before they are inserted into the DATAGONE.

If the degauss chute becomes very dirty the drives may become stuck and not release after the degausser has fired. Under these circumstances the chute should be cleaned.

**Note: Before cleaning takes place the unit must be unplugged from the mains supply**

The chute should be cleaned using a soft cloth or paper hand towel. If the dirt is sticky then a small amount of a cleaning agent such as Isopropyl alcohol (IPA) can be used on the cloth or paper towel. A brush with a long handle can be used to clean the chute but care must be taken not to damage the plastic gate inside the chute that stops the Hard Drive.

### **12.4 Resetting the circuit breaker**

The DATAGONE Degausser is not equipped with any on-board fuses that require replacement. All the systems within the unit are protected by the circuit breaker which is located on the rear of the unit – this can be manually reset by the user. If the unit fails in any way, the user should verify the condition of the circuit breaker prior to contacting support.

**The DATAGONE Degausser contains extremely high electrical voltages and currents. For safety reasons, VS Security Products Ltd does not recommend that the covers be removed by anyone other than trained VS Security Products technicians.**

VS SECURITY PRODUCTS LIMITED  
17 Pegasus Court  
North Lane  
Aldershot  
Hampshire GU12 4QP  
UK

Tel: +44 (0) 1252 333577  
Fax: +44 (0) 1252 333448  
Email: [sales@vssecurityproducts.com](mailto:sales@vssecurityproducts.com)

VS AND ASSOCIATES  
3160 Texas Hill Road  
Placerville  
CA 95667  
USA

Tel: 530-626-6924  
Fax: 530-626-6989  
Email: [ussales@vssecurityproducts.com](mailto:ussales@vssecurityproducts.com)