

CopyBox Standard

CD/DVD Duplicator



User Manual

v10.0

Table of Contents

	Page
Table of Contents.....	3
Introduction.....	4
Warranty.....	4
Disclaimer.....	4
Installation.....	5
Instructions.....	5
1. Copy.....	6
2. Test.....	6
3. Test & Copy.....	6
4. Verify.....	7
5. Compare.....	7
6. Prescan.....	8
7. Disc Info.....	8
8. Select Source.....	8
9. Image.....	9
9.1 Load.....	9
9.2 Delete Image.....	9
9.3 Image Info.....	10
9.4 Compare Image.....	10
9.5 Select Image.....	10
9.6 Image Source Drive.....	11
9.7 Image Format Info.....	11
9.8 Edit.....	11
9.9 Format HDD.....	11
9.10 Load Image Method.....	12
10. Edit Track.....	13
10.1 CD to CD Edit.....	13
10.2 CD to HDD Edit.....	14
10.3 Close Session.....	14
11. Setup.....	15
11.1 Language.....	15
11.2 Burn Speed.....	15
11.3 Read Speed.....	15
11.4 Auto Start Drive.....	16
11.5 Startup Menu.....	16
11.6 Auto Verify.....	16
11.7 Auto Compare.....	16
11.8 Auto Prescan.....	16
11.9 Eject Disc.....	17
11.10 Burn On The Fly.....	17
11.11 Burn Mode.....	17
11.12 Display Time.....	17
11.13 Button Sound.....	18
11.14 Device Info.....	18
11.15 System Info.....	18
11.16 Quick Erase.....	18
11.17 Full Erase.....	18
11.18 Auto Close Tray*.....	19
11.19 Quick Compare*.....	19
11.20 Tray In/Out*.....	19
11.21 Boot Time Delay*.....	19
11.22 Start Tray Eject*.....	20
11.23 Disc Redetect*.....	20
11.24 Show Burn Speed*.....	20
12. Advanced Setup.....	21
12.1 UnderRun Protect.....	21
12.2 Overburn.....	21
12.3 Read Error Skip.....	21
12.4 Format HDD.....	22
12.5 Verify HDD.....	22
12.6 Burn-in.....	22
12.7 Update Firmware.....	23
12.8 Compare Firmware.....	23
12.9 H/W Diagnostic.....	23
12.10 Load Default.....	23
12.11 CD+G.....	23
12.12 ISRC & MCN.....	24
12.13 USB Option*.....	24
12.14 CD-TEXT.....	24
12.15 Password.....	24
12.16 Disc Counter*.....	24
12.17 Auto Save Image*.....	25
12.18 F1 Hotbutton Setup*.....	25
12.19 F1 Hotbutton Setup*.....	25
12.20 Index.....	25
12.21 Auto Run Time.....	25
Installing PC-Connected CopyBox 3, 5, 7, 9.....	26
Switching USB Connection On/Off.....	26
Installation CopyBox 1 with USB Connection.....	28
Technical information.....	29
Safety Precautions.....	29
Technical Issues.....	29

* Not available on the CopyBox 1

Introduction

The CopyBox Standard duplicator is a stand-alone CD/DVD copy system specifically designed to quickly and easily duplicate DVD's and CD's. The CopyBox Standard duplicators are available in three versions; Stand-Alone, with built-in hard drive and PC-connected. The CopyBox Standard duplicators are available with 1, 3, 5, 7, 9 and 11 burners.

Main advantages of the CopyBox:

- Quick, easy and inexpensive duplication of recordable CD and DVD.
- Suitable for all users, with no computer knowledge required.
- Standalone operation, no PC or software required.
- Fast copying at up to 24 x DVD write speed. (One copy in 5 minutes)
- Support for all recordable CD and DVD formats.
- Support for dual-layer (8.5 GB) DVD recordable.
- Simple operation through buttons and a LCD display on the control panel at the front.
- Available in three versions (Stand-Alone, with HDD, PC-connected) for all specific copying needs.

Warranty

General Warranty

On all CopyBox systems a standard carry-in warranty of two years applies. The warranty covers breakdowns or faults due to defect in materials or workmanship. It does not cover wear & tear, gradual deterioration in performance, failure caused by, use of unauthorised or unsuitable software, connection to incompatible equipment, ingress of moisture, fluid or foreign bodies, physical or electrical stress, connection to an electrical supply for which it has not been adjusted, lightning strike, incorrect storage, operation or use of the product in unsuitable environments or inappropriate applications, incorrect installation, accidental damage or damage caused by negligence or misuse, unauthorised modification, incorrect adjustment or repair by persons other than trained personnel. The following additional warranty provisions shall also apply:

The warranty will automatically expire if the warranty seals have been broken or removed.

The optical drives in a CopyBox duplicator are sensitive to certain types of pollution. We advise:

- § ***Do not smoke** near the CopyBox duplicator.*
- § ***Do not place the CopyBox in the same room as laser printers and photocopy machines.***
- § ***Do not expose the CopyBox to fine dust particles such as construction debris.***

Pollution of the CD/DVD drives is not covered under warranty.

Disclaimer

The main function of the CopyBox is making copies of DVD's and CD's which are in users possession and duplication of self-produced CD's or DVD's. Copying and duplicating DVD's and CD's which are not in users possession is illegal and may result in criminal prosecution.

Installation

Contents of the package

The CopyBox package comes with:

- CopyBox duplicator
- Power cord
- Printed User Manual
- USB cable (PC-Connected version)
- Software CD (PC-Connected version).

Before installation check the package and supplied parts for physical damage. Also check the warranty seal on the CopyBox is not damaged or missing. If the product is damaged, please contact your dealer immediately.

CopyBox Installation

- Placement

Take the CopyBox duplicator from the packaging and place it on a dry, dust-free and stable surface. To avoid dangerous situations, do not place any objects which cover the CopyBox (rug), are full of liquid (vase) or producer heat (lamp).

- Connection

Plug the power cord into the power cord socket on the back of the CopyBox. (1) Connect the power cord into an electrical outlet. Push the power switch on the front side of the CopyBox to turn on the power.



The CopyBox is now ready for use.

Installation of the CopyBox 1 with USB connection

For installation of the CopyBox 1 with USB connector please see page 26 of this manual.

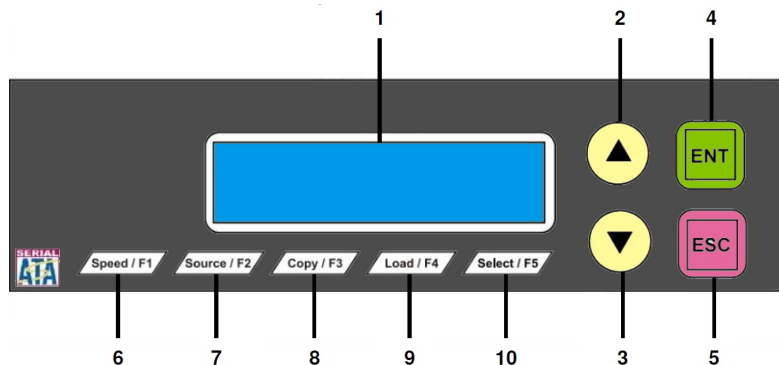
Installation of CopyBox 3, 5, 7 and 9 "PC-connected"

For installation of the CopyBox PC connected duplicators please see page 24 of this manual.

Instructions

The CopyBox duplicator offers a control panel on the front. Using this control panel, the various functions can be set. The control panel consists of the following components:

1. LCD Display
2. Selector button "Up"
3. Selector button "Down"
4. Selector button "Enter"
5. Selector button "Escape"
6. Function button F1 (Speed)
7. Function button F2 (Source)
8. Function button F3 (Copy)
9. Function button F4 (Load)
10. Function button F5 (Select)



Function buttons F1 to F5 are pre-programmed to use a number of frequently used features. It is possible to assign functions yourself to the F1 and F2 buttons from the Advanced Setup menu. (13 -18 and 13-19)

Using the control panel the following twelve main menu functions can be selected:

- | | |
|----------------|------------------------------------|
| 1. Copy | 7. Disc Info |
| 2. Test | 8. Select Source |
| 3. Test & Copy | 9. Image |
| 4. Verify | 10. Edit Track |
| 5. Compare | 11. Setup |
| 6. Prescan | 12. USB Mode (PC-Connected models) |

1. Copy

The "Copy" function is intended to copy data from a "Source" disc (master) directly to blank DVD±R or CD-R discs (targets). The CopyBox can copy both "On The Fly" (directly from disc to disc) and from the (optional) internal hard drive. For copying from hard drive please see menu 8 (Select Source) and 9 menu (Image). For direct copying from disc to disc use the following procedure:

- Select the "Copy" function with the "Up" or "Down" button.
- Open the drawers of the DVD reader and DVD writers.
- Place the Master disc in the DVD reader.
- Place DVD or CD Recordables in one or more DVD writers and close the drawers of the DVD reader and DVD writers.
- Press "Enter" button to start the copy process. If there are already recorded DVD±RW discs used these will first be erased automatically.
- During the copy process displayed time and number of MB's will reduce while the completed percentage increases.
- When the copy process is finished, the result is displayed on the LCD screen. The DVD writers are automatically opened.
- If data is not duplicated "On the Fly" but from the optional hard drive (see Chapter 8 and 9) the selected hard drive partition will be displayed on the LCD screen.

1. Copy	4300MB
---------	--------

Copyi ng – 16x	0%
4300 MB	06: 30

OK: 07
Ti me: 00: 05: 10

1. Copy	P: A
4300MB	

2. Test

The "Test" function is almost identical to the "Copy" function. The difference is the copying process is simulated without the DVD or CD recordables actually being written. This function can be used when there are problems reading from a master disc or burning recordable discs. Using option 12.6 (Burn-In) the test mode can be automatically repeated several times.

Attention! This function can be used with CD-R or DVD-R s disc. DVD+R discs do not support this feature.

- Select the "Test" function with the "Up" or "Down" button.
- Open the drawers of the DVD reader and DVD writers.
- Place the Master disc in the DVD reader.
- Insert DVD - R or CD-R discs in one or more DVD writers and close the drawers of the DVD reader and DVD writers.
- To start, press the "Enter" button.
- When the test process is completed, the result is displayed on the LCD screen.

2. Test	4300MB
---------	--------

Testi ng – 16x	0%
4300 MB	06: 30

OK: 07
Ti me: 00: 05: 10

3. Test & Copy

This function is used to first test a master disc and copy the disc afterwards.

Please Note! This function can be used with CD-R or DVD-R discs. DVD+R discs do not support this feature.

- Select the "Test & Copy" function with the "Up" or "Down" button.
- Open the drawers of the DVD reader and DVD writers.
- Place the Master disc in the DVD reader.
- Insert DVD-R or CD-R discs in one or multiple DVD±RW drives and close the drawers of the DVD reader and DVD±RW drives.
- Press the "Enter" button to start the test- and copy process. If there are already recorded DVD±RW's used these will first be erased automatically.

3. Test & Copy	4300MB
----------------	--------

Testi ng – 16x	0%
4300 MB	06: 30

- The testing process will now begin.
- Once the testing process is completed successfully, the copying process will start.
- Once the entire process is completed, the LCD display shows the result.

Copyi ng - 16x	0%
4300 MB	06: 30

OK: 07
Ti me: 00: 05: 10

You can now start the next test and copy session using the same master disc or place another disc into the DVD reader.

4. Verify

With this function, the copied discs can be checked for read errors. After duplicating, leave the CD's or DVD's into the DVD writers.

- Select the "Verify" function using the "Up" or "Down" button.
- Press "Enter" button to start the verify process.
- Once the verification is complete, the LCD display shows the result.

4. Veri fy	4300MB
------------	--------

Veri fy - 16x	0%
4300 MB	06: 30

OK: 07
Ti me: 00: 05: 10

5. Compare

Using the Compare function the master disc and the recordable discs can be compared after duplicating. It checks whether the master disc and copies are 100% identical. The Compare function can not be used with Audio-CD and Video-CD formats.

- Select the "Compare" function with the "Up" or "Down" button.
- Press "Enter" button, the compare process will now start.
- Once the process is completed, the LCD display shows the result.
- The drawers of the DVD writers are opened. Press "Enter" button to view the details of the master disc.
- Press the "Enter" button to see details of the target discs. If the discs are identical the following appears on the LCD display:
- When an error occurs during the compare process this will show on the LCD display as "failure". By twice pressing the "Enter" button, the error is displayed on the LCD display.

5. Compare	4300MB
------------	--------

Compare - 16x	0%
4300 MB	06: 30

Compare	OK: 7
Fai l : 0	Di ff: 0

Src: 01	DVD-ROM
Total :	4300 MB

Tgt: 02	DVD-RW
I denti cal	

Tgt: 02	DVD-RW
TOC not match	

6. Prescan

The "Prescan" function is used to test whether the master disc can be read correctly. Also the read speed of the DVD reader drive can be tested with this function.

- Select the "Prescan" function with the "Up" or "Down" buttons.
- Open the drawer of the DVD reader.
- Place the Master disc the DVD reader.
- Press "Enter" button to launch the "Prescan" feature.
- When the "Prescan" process is terminated and the source disc can be read correctly, the LCD screen shows the following result:

6. Prescan	4300MB
------------	--------

Scanning - DVD	0%
4300 MB	06: 30

Prescan OK!

7. Disc Info

The "Disc Info" function is used to view information about the source and target discs.

- Select the "Disc Info" function with the "Up" or "Down" button.
- Select the desired disc (the source or one of the targets) with the "Up" or "Down" button and press "Enter" button. The disc information is now displayed on the LCD display:

7. Disc Info	4300MB
--------------	--------

DiscType:	DVD+R
Capacity:	4300MB

8. Select Source

The "Select Source" function allows either the DVD reader, one of the DVD writers or the (optional) hard drive to be selected as source drive. "The source drive" is the drive from which data is loaded for duplication.

- Select the "Select Source" function with the "Up" or "Down" buttons
- Press "Enter" button and use the "Up" and "Down" buttons to select the desired source. CH00 is used for the optional internal hard drive, CH01 is used for the CD/DVD reader; the top drive.
- After the desired source is selected press the "Enter" button and the LCD display will show the selected source:

8. Select Source

Src: SUPER MULTI
01 CH01

S-MULTI selected

If the optional hard drive is selected as the source, and none of the partitions contain data, an error message will appear on the LCD display. You can now select any other source or copy data to one of the hard drive partitions. More information about the use of the hard drive can be found under menu 9.

9. Image

Function 9 is only usable if the optional internal hard drive is installed. This menu consists of the following ten components:

1. Load
2. Delete Image
3. Image Info
4. Compare Image
5. Select Image
6. Select Source Drive
7. Image Format Info
8. Edit
9. Format HDD
10. Load Image Method

Master CD's and DVD's can be loaded onto the internal hard drive of the CopyBox as "image file". An image file is an exact copy of an entire CD or DVD. The internal hard drive of the CopyBox is divided into partitions of 1 GB. When loading a CD or DVD image the first available partition letter is automatically assigned. If desired, the partition ID can also be assigned manually (see function 9.8) Depending on the size of the image multiple succeeding 1 GB partitions are used.

Example: a 4.7 GB DVD is loaded to the internal hard drive. Here, the first free partition (A) is assigned to the image file. As a 4.7GB DVD requires five partitions of 1 GB, partition letters B, C, D and E also will be reserved. The next free partition, after loading the DVD will be partition "F".

Select the "Image" function in the main menu using the "Up" or "Down" button and press the "Enter" button to select function 9.1.

9.1 Load

- Select the "Load" function with the "Up" or "Down" button. The "Load" feature allows an image file from the DVD reader drive to be loaded on the internal hard drive. P:A means "partition A" is selected.
- Press "Enter" button to copy the image file to the hard drive.
- When the DVD image was copied successfully, the following message wil show on the LCD display:

```
9-01. Image      P:  A
Load
```

```
Load - A - 16x   100%
4300 MB          05: 10
```

```
I m a g e l o a d O K
```

9.2 Delete Image

To remove an image file from a partition the "Delete Image" function is used.

- Select the "Delete Image" function with the "Up" or "Down" button and press "Enter" button.
- The CopyBox will ask whether the image should be removed. Select "Yes" or "No" with the "Up" or "Down" button and press "Enter" button.
- After the image file is removed the following message appears on the LCD display:

```
9-02. Image      P:  A
Delete Image
```

```
Delete Image?  Yes
A: DVD          4300MB
```

```
Partiti on:  A
I m a g e i s d e l e t e d
```

9.3 Image Info

This feature displays information about an image file on a specific partition.

- Select the "Image Info" function with the "Up" or "Down" button.

```
9-03.  Image  P:  A
Image Info
```

- Press "Enter" button to view the image file information

```
Img Type:  DVD+R
Capaci ty: 4300 MB
```

9.4 Compare Image

The "Compare Image" function is used to compare the master disc and the copied image file on the hard drive. It checks if the master disc and the copied image file are 100% identical. The Compare function can not be used with Audio-CD and Video-CD formats.

- Select the "Compare Image" function with the "Up" or "Down" button.

```
9-04.  Image  P:  A
Compare Image
```

- Press the 'Enter' button to start the compare process. The LCD display will show the following information:

```
Comp - A- 16x    100%
4300 MB        05: 10
```

- Once the "Compare" function is completed, the following information shows on the LCD display:

```
Compare        OK:  1
Fail :  0      Diff: 0
```

- Press the 'Enter' button to view the details of the master disc:

```
Src: 01  SUPER MUL
Total : 4300.0 MB
```

- Press "Enter" button again to view the details of the target image. If the comparison is successful, the following information will appear on the LCD display:

```
Tgt: 00 HDD  P:  A
Identical
```

- If an error is detected during the comparison this will be reported on the LCD display. Press twice the "Enter" button to get information about the error.

```
Tgt: 00 HDD  P:  A
TOC not match
```

9.5 Select Image

Using this function the desired partition on the hard drive can be selected for duplication.

- Select the "Select Image" function with the "Up" or "Down" button and press "Enter" button.

```
9-05.  Image  P:  A
Select Image
```

- Select a partition with the "Up" or "Down" button.

```
Select Partiti on
A:  DVD    4300 MB
```

- After the partition is selected, the LCD display shows the selected result. Confirm your selection with the "Enter" button.

```
Set Partiti on to
A
```

9.6 Image Source Drive

Using this function, the DVD reader or any DVD writer can be selected as "source" drive. From the source drive image files are copied to the hard drive partitions. By default, the top drive is set as the source drive.

- Select the "Image Src Drive" function with the "Up" or "Down" button.

```
9-06. Image P: A
Image Src Drive
```

- Select the desired source drive with the "Up" or "Down" button.

```
Select Img Scr:
01 CH01 S-MULTI
```

- Once the desired source is selected, press the "Enter" button and the LCD display will show the following information:

```
Load Image from
Drive ID-01
```

9.7 Image Format Info

Using this function, the format of the hard drive partitions can be viewed. The CopyBox uses F_S as the default format.

- Select the "Image Format Info" function with the "Up" or "Down" button.

```
9-07. Image P: A
ImageFormat Info
```

- Press "Enter" button. The LCD display shows the hard drive partitions format.

```
ImageFormat Info
F_S
```

9.8 Edit

This feature is used to add a title to the different hard drive partitions. Besides a main title, also two sub-titles can be entered for each partition. Each line can contain 12 letters or numbers.

- Select the "Edit" function with the "Up" or "Down" button.
- Press "Enter" button. Now the first character of the title can be entered. Use the "Up" or "Down" button to select the desired character and press "Enter" button. Repeat this process to enter the following characters.
- If needed, the two sub-titles for the partition can also be entered. Repeat the procedure described above in order to enter the characters.

```
9-08. Image P: A
Edit
```

```
Edit Title
?
```

```
Edit Sub1 Title
?
```

9.9 Format HDD

Using this function, the optional hard drive can be reformatted.

Please Note! All existing data on the hard drive will be erased when formatting.

- Select the "Format HDD" option with the "Up" or "Down" button and press "Enter" button.

```
9-09. Image P: A
Format HDD
```

- The CopyBox uses the F_S formatting as default.

```
HD Partiti on
FormatSelect? F_S
```

- Press "Enter" button. The CopyBox will ask if the hard drive needs to be formatted. Select "Yes" or "No" with the "Up" or "Down" button and press "Enter" button.
- After formatting the hard drive can be checked using the Verify function. Select "Yes" or "No" with the "Up" or "Down" button and press "Enter" button.

```

All data will be
lost, format ? Yes
    
```

```

Format HDD OK !
verify HDD?      No
    
```

9.10 Load Image Method

By default, the partition letters are automatically assigned to image files on the internal hard drive. This function allows partition letters to be selected manually.

- Select the "Load Image Method" function with the "Up" or "Down" button.
- Press "Enter" button. There can now be selected for "Auto" (default setting) or "Manual". Use the "Up" or "Down" button to select the desired setting and press "Enter" button.

```

9-10. Image P: A
Load Image Method
    
```

```

Load Image Method
Auto
    
```

10. Edit Track

Using this special feature a new Audio-CD can be composed from several different Audio-CD's. The "Edit Track" function consists of three parts:

1. *CD to CD Edit*
2. *CD to HDD Edit*
3. *Close Session*

- From the main menu select the "Edit Track" function with the "Up" or "Down" button and press the "Enter" button to select 1.10 function.

10.1 CD to CD Edit

This feature allows to copy one or multiple audio tracks from an Audio-CD to a blank CD-R or CD-RW disc.

- Insert an Audio-CD in the DVD reader.
- Place one (or more) CD-R discs in the DVD writers.
- Press "Enter" button to select the desired audio tracks. 1/10 indicates track 1 of 10, 03:25 indicates the length of the track.
- Using the "Up" or "Down" button various tracks can be selected. Press "Enter" button to select a track. Once a track is selected you will see a "+" before the track number. A track can be deselected again by pressing the "Enter" button again.
- When finished selecting the desired tracks use the "End" function with the "Up" or "Down" button:
- To end the CD composition press the "Enter" button and choose "Yes" or "No".
- The CopyBox will burn the selected audio tracks on the target CD's. After the tracks are copied press the "Enter" button. The CopyBox will now ask if putting together the CD needs to be continued. Select "Yes" or "No" using the "Up" or "Down" button and press "Enter" button.
- If you have chosen to continue composing the source CD automatically ejects. The CopyBox will now ask for a next master Audio-CD.
- Once the next Audio-CD is inserted into the DVD reader drive, the "Edit Track" process can be repeated. Once all desired audio tracks are selected the "No" option needs to be selected with the "Up" or "Down" button when the CopyBox asks to continue editing.
- Confirm "No" with the "Enter" button. The CopyBox will now ask if the disc should be closed. Select "Yes" with the "Up" or "Down" button and press "Enter" button.
- If the CD is completed the following message appears on the LCD display:

10-01. Edit Track

CD to CD Edit

Select Track:

1/10

03:25

Select Track:

+ 1/10

03:25

Select Track:

End 1 Trk 03:25

End edit disc

and burn? Yes

Continue edit

next Disc? Yes

Yes

Insert next disc

Continue edit

next Disc? No

No

Close all discs

sessions? Yes

Close Complete

OK: 7

Fail: 0

The Audio CD is now ready for use.

10.2 CD to HDD Edit

This feature allows several audio tracks to be selected and placed on the internal hard drive before burning a CD-R or CD-RW. This feature is available only if the CopyBox is equipped with the optional hard drive.

- From the "Edit Track" menu (10) select the "CD to HDD" function with the "Up" or "Down" button and confirm with the "Enter" button.

```
10. 02.  Edi t Track
CD to HDD Edi t
```

- Then walk through the steps described in section 10.1 until all desired audio tracks are written to a temporary partition of the hard drive. When the CopyBox asks whether editing needs to be continued with a next disc; choose "No" with the "Up" or "Down" button and press "Enter" button.

```
Conti nue edi t
next Di sc?      No
```

- Now the CopyBox will ask whether the tracks need to be burned onto a CD or written to a disc image. Choose "Burn" with the "Up" or "Down" button if the tracks need to be burned to a CD and confirm using the "Enter" button.

```
Burn or Move to
parti ti on?    Burn
```

- The CopyBox will now write the selected audio tracks to the CD recordable discs. Once the writing process has been completed the following message appears on the LCD display:

```
Burn Compl ete!
OK: 07
```

- If the selected audio tracks must first be written to a hard drive partition select "Move" with the "Up" or "Down" button. Confirm your selection with the "Enter" button.

```
Burn or Move to
parti ti on?    Move
```

- Then choose a hard drive partition where the audio tracks need be moved to:

```
Sel ect Parti ti on
A
```

- Confirm your selection with the "Enter" button. All audio tracks will be moved to the selected partition. Once the move is complete the following message appears on the LCD display:

```
Movi ng to P: A
OK!
```

- If the selected partition already contains data the CopyBox will ask whether existing data should be overwritten. Select "Yes" or "No" "Up" or "Down" button and confirm with the "Enter" button.

```
Im age Exi sts
Overwri te?     Yes
```

10.3 Close Session

Using this function, Audio-CD's will be closed so no more data can be added. After closing the Audio-CD's can be played in any conventional Audio CD player.

- From the "Edit Track" menu (10) select "Close Session" with the "Up" or "Down" button and press "Enter" button.

```
10. 04.  Edi t Track
Cl ose Sessi on
```

- The CopyBox will ask whether all sessions need to be closed. Select "Yes" or "No" with the "Up" or "Down" button and press "Enter" button. If "Yes" is selected, the LCD display will show the following message:

```
Cl osi ng Sessi on
Pl ease wai t....
```

- Once the CD is closed the following message will be displayed on the LCD display:

```
Cl osi ng Compl ete
OK: 7          Fai l : 0
```

11. Setup

Using the "Setup" menu all CopyBox settings can be adjusted. However, it is advisable not to change the default settings as long as there is no need for this. The "Setup" menu consists of the following items:

- | | |
|---------------------|----------------------|
| 1. Language | 13. Button Sound |
| 2. Burn Speed | 14. Device Info |
| 3. Read Speed | 15. System Info |
| 4. Auto Start Drive | 16. Quick Erase |
| 5. Startup Menu | 17. Full Erase |
| 6. Auto Verify | 18. Auto Close Tray |
| 7. Auto Compare | 19. Quick Compare |
| 8. Auto Prescan | 20. Tray In/Out |
| 9. Eject Disc | 21. Boot Time Delay |
| 10. Burn On The Fly | 22. Start Tray Eject |
| 11. Burn Mode | 23. Disc Redetect |
| 12. Display Time | 24. Show Burn Speed |

Please Note! When a setting is changed remember to confirm this by pressing the "Enter" button.

- Select the "Setup" menu from the main menu using the "Up" or "Down" button and confirm with the "Enter" button.

11.1 Language

With this function, the language can be set. The default setting is English.

- Select the "Language" option in the "Setup" menu with the "Up" or "Down" button and press "Enter" button.
- Select the desired language and confirm with the "Enter" button.

11-01. Setup
Language

Language
Engl i sh

11.2 Burn Speed

This function allows the different maximum write speeds for CD, DVD and Audio CD to be set manually. When using the default setting "Auto" the CopyBox determines the maximum speed according to the used recordable media. In some cases it may be desirable to manually lower the maximum burn speed.

- Select the "Burn Speed" option from the "Setup" menu with the "Up" or "Down" button and press "Enter" button.
- With the "Up" or "Down" button, the settings can be selected for CD, DVD and Audio-CD. Confirm your selection with the "Enter" button.
- Select the desired maximum writing speed with the "Up" or "Down" button. Confirm by pressing the "Enter" button.

11-02. Setup
Burn Speed

Burn Speed
DVD Burn Speed

DVD Burn Speed
16x

11.3 Read Speed

The "Read Speed" function allows the read speed of the DVD reader to be set manually.

- Select "Read Speed" option from the "Setup" menu with the "Up" or "Down" button and press "Enter" button.
- The default setting is "Maximum". Lower speeds can also be selected using the "Up" or "Down" button. Confirm your selection with the "Enter" button.

11-03. Setup
Read Speed

Read Speed
Maxi mum

11.4 Auto Start Drive

This function determines if the CopyBox must automatically start the copy or test function. See also function 11.18 (Auto Close Tray).

- Select the "Auto Start Drive" option from the "Setup" menu with the "Up" or "Down" button and press "Enter" button.
- The default setting is "Off". Select the desired setting with the "Up" and "Down" buttons. Confirm your selection with the "Enter" button.

11-04. Setup
Auto Start Drive

Auto Start Drive
Off

11.5 Startup Menu

This option allows each menu item (except for the "Advanced Setup" menu) to be selected as first menu when the CopyBox is turned on.

- Select the "Startup Menu" option from the "Setup" menu with the "Up" or "Down" button and press "Enter" button.
- The default setting is "Copy". Select the desired setting with the "Up" or "Down" button. Confirm your selection with the "Enter" button.

11-05. Setup
Startup Menu

Startup Menu
1. Copy

11.6 Auto Verify

This feature allows DVD or CD discs to be automatically checked for readability after copying.

- Select the "Auto Verify" option from the "Setup" menu with the "Up" or "Down" button and press "Enter" button.
- The default setting is "Off". Select the desired setting with the "Up" or "Down" button. Confirm your selection with the "Enter" button.

11-06. Setup
Auto Verify

Auto Verify
Off

11.7 Auto Compare

This feature allows the master disc and the copied target discs be compared automatically after copying.

- Select the "Auto Compare" option from the "Setup" menu with the "Up" or "Down" button and press "Enter" button.
- The default setting is "Off". Select the desired setting with the "Up" or "Down" button. Confirm your selection with the "Enter" button.

11-07. Setup
Auto Compare

Auto Compare
Off

11.8 Auto Prescan

This feature allows the master disc to be automatically checked for good readability prior to the burning process.

- Select the "Auto Prescan" option from the "Setup" menu with the "Up" or "Down" button and press "Enter" button.
- The default setting is "Off". Select the desired setting with the "Up" and "Down" buttons. Confirm your selection with the "Enter" button.

11-08. Setup
Auto Prescan

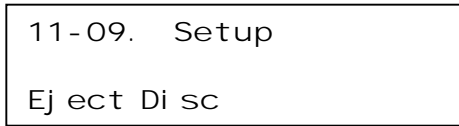
Auto Prescan
Off

11.9 Eject Disc

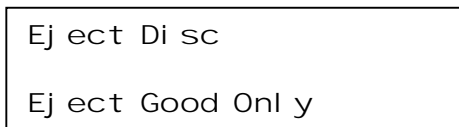
This function determines what happens with discs after the writing process. This function offers three possibilities:

1. *Eject Good Only* : Only successfully burned disk are automatically ejected (default setting).
2. *Eject All Disc* : All discs are automatically ejected after the burning process.
3. *Do Not Eject* : No discs are ejected after the burn process.

- Select the "Eject Disc" option from the "Setup" menu with the "Up" or "Down" button and press "Enter" button.



- Select the desired setting with the "Up" and "Down" buttons. Confirm your selection with the "Enter" button.

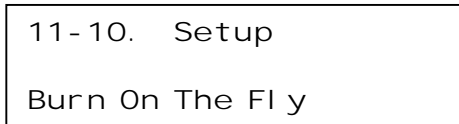


11.10 Burn On The Fly

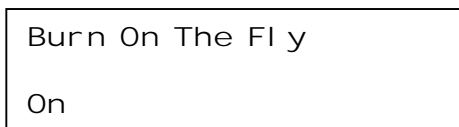
Using this function, the copy mode can be set. The default setting "On" copies data directly from the master disc to the DVD writers. When "Off" is selected, data is first copied to the (optional) hard drive and then copied to the DVD writers.

Please Note! Once "Burn on the Fly" is disabled, the word "safe" in the LCD appears to menus 1, 2 and 3

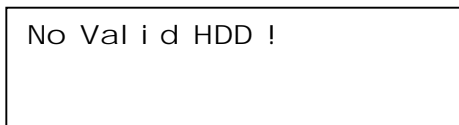
- Select the "Burn On The Fly" option from the "Setup" menu with the "Up" or "Down" button and press "Enter" button.



- Select the desired setting with the "Up" or "Down" button. Confirm your selection with the "Enter" button.



- If the optional hard drive is not installed and the "Off" option is selected, the following message appears on the LCD display:

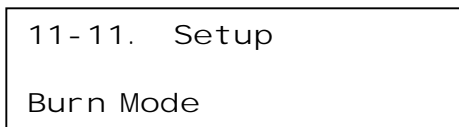


11.11 Burn Mode

This feature allows the different writing methods to be selected;

1. *DAO (Disc At Once)* This is the default setting.
2. *TAO (Track At Once)*

- Select the "Burn Mode" option from the "Setup" menu with the "Up" or "Down" button and press "Enter" button.



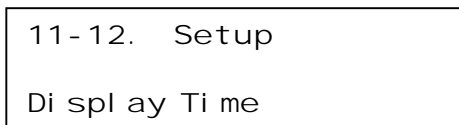
- Select the desired setting with the "Up" or "Down" button. Confirm your selection with the "Enter" button.



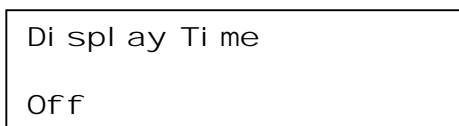
11.12 Display Time

This function can turn on and off the display of the total burn time after the burning process. The default setting is "Off".

- Select the "Display Time" option from the "Setup" menu with the "Up" or "Down" button and press "Enter" button.



- Select the desired setting with the "Up" or "Down" button. Confirm your selection with the "Enter" button.



11.13 Button Sound

This feature allows the audio signals from the controller buttons to be turned On or Off. The default setting is "On".

- Select the "Sound Button" option from the "Setup" menu with the "Up" or "Down" button and press "Enter" button.
- Select the desired setting with the "Up" or "Down" button. Confirm your selection with the "Enter" button.

11-13. Setup
Button Sound

Button Sound
On

11.14 Device Info

This function shows information about the installed DVD reader and DVD writers.

- Select "Device Info" option in the "Setup" menu with the "Up" or "Down" button and press "Enter" button.
- Select the desired drive using the "Up" or "Down" button. Confirm your selection with the "Enter" button.
- By again pressing the "Enter" button more information about the drive can be displayed.

11-14. Setup
Device Info

01 CH01
S-MULTI : Opti arc

DVD RW AD-7280S
1.01

11.15 System Info

This function shows system information about the CopyBox duplicator.

- Select the "System Info" option in the "Setup" menu with the "Up" or "Down" button and press "Enter" button.
- Press "Enter" button to view more information about the CopyBox controller.

11-15. Setup
System Info

5105PX ver: 2.9FS
2011/7/18 ACARD

11.16 Quick Erase

Using this function, rewritable DVD and CD discs already containing data can be erased quickly. The Quick Erase function only reases the TOC (Table Of Content) from the rewritable discs.

- Select the "Quick Erase" option from the "Setup" menu with the "Up" or "Down" button and press "Enter" button.
- Press "Enter" button. The CopyBox will ask whether the rewritable discs must be erased. Select "Yes" or "No" with the "Up" or "Down" button and press "Enter" button.

11-16. Setup
Quick Erase

All data will be
Lost erase? Yes

11.17 Full Erase

Using this function, rewritable DVD and CD discs can be completely erased. Compared to the "Quick Erase" function, this process takes much more time.

- Select the "Full Erase" option from the "Setup" menu with the "Up" or "Down" button and press "Enter" button. For the next steps, see menu 11.16 (Quick Erase).

11-17. Setup
Full Erase

11.18 Auto Close Tray*

This function sets the number of seconds after which the trays of the DVD writers will be closed automatically after a test session. This feature works in conjunction with function 11. 4 (Auto Start Drive). The function can also be useful when the CopyBox system must perform several independent test sessions consecutively. See also function 12.6.

- Select the "Auto Close Tray" option from the "Setup" menu with the "Up" or "Down" button and press "Enter" button.
- Select the desired number of seconds (5, 10, 15, 20, 25, 30, 35, 40, 45, 50) with the "Up" or "Down" button and confirm with the "Enter" button.

* Not available on the CopyBox 1

11 - 18. Setup
Auto Cl ose Tray

Auto Cl ose Tray
10

11.19 Quick Compare*

After copying a small part of the burned discs can automatically be compared with the master disc. The default setting is "Off".

- Select the "Quick Compare" option from the "Setup" menu with the "Up" or "Down" button and press "Enter" button.
- Select the desired amount of data to be automatically compared with the master disc (1 byte, 1 Kbytes, 10 Kbytes, 100 Kbytes, 1 Mbytes, 10 Mbytes, 100 Mbytes) with the "Up" or "Down" button and confirm with the "Enter" button.

* Not available on the CopyBox 1

11 - 19. Setup
Qui ck Compare

Qui ck Compare
10 MBytes

11.20 Tray In/Out*

This function sets the opening and closing of the drive trays. The available options are "All Once" or "Divide 2". The latter setting allows to first open the top half of the trays, then the bottom half. "All Once" is the default setting.

- Select the "Tray In / Out" option from the "Setup" menu with the "Up" or "Down" button and press "Enter" button.
- Select the desired setting with the "Up" or "Down" button and confirm with the "Enter" button.

* Not available on the CopyBox 1

11 - 20. Setup
Tray I n/Out

Tray- I n/Out
Al l Once

11.21 Boot Time Delay*

This function sets the total time the CopyBox waits during startup for the drive detection phase.

- Select the "Boot Time Delay" option from the "Setup" menu with the "Up" or "Down" button and press "Enter" button.
- The default is 5 seconds. Other values (5 to 99 seconds) can be selected using the "Up" or "Down" button. Confirm your selection with the "Enter" button.

* Not available on the CopyBox 1

11 - 21. Setup
BootTi me Del ay

BootTi me Del ay
5

11.22 Start Tray Eject*

This function sets if the drive trays are opened automatically after starting the CopyBox. The default setting is "On".

- Select the "Start Tray Eject" option from the "Setup" menu with the "Up" or "Down" button and press "Enter" button.
- Select the desired setting with the "Up" or "Down" button. Confirm your selection with the "Enter" button.

11 - 22. Setup
Start Tray Eject

Start Tray Eject
On

* Not available on the CopyBox 1

11.23 Disc Redetect*

This function sets whether the CopyBox will try to detect a recordable discs for a second time when it the first time fails. This option can be used when discs of poor quality are used or when discs are dirty or scratched. The default setting is "Off".

- Select the "Disc Redetect" option from the "Setup" menu with the "Up" or "Down" button and press "Enter" button.
- Select the desired setting with the "Up" or "Down" and b ttach the choice with the "Enter" button.

11 - 23. Setup
Di sc Redetect

Di sc Redetect
Off

* Not available on the CopyBox 1

11.24 Show Burn Speed*

This function sets if the actual CD/DVD write speed is displayed on the LCD display while duplicating. The default setting is "On".

- Select the "S how Burn Speed" option from the "Setup" menu with the "Up" or "Down" button and press "Enter" button.
- Select the desired setting with the "Up" or "Down" button. Confirm your selection with the "Enter" button.

11 - 24. Setup
Show Burn Speed

Show Burn Speed
On

* Not available on the CopyBox 1

12. Advanced Setup

Through the hidden "Advanced Setup" menu settings of the CopyBox system configuration can be modified. To access the "Advanced Setup" menu the "Esc" button needs to be pressed for three seconds. The "Advanced Setup" menu consists of the following components:

- | | |
|---------------------|------------------------|
| 1. UnderRun Protect | 12. ISRC & MCN |
| 2. Overburn | 13. USB Option |
| 3. Read Error Skip | 14. CD-TEXT |
| 4. Format HDD | 15. Password |
| 5. Verify HDD | 16. Disc Counter |
| 6. Burn-in | 17. Auto Save Image |
| 7. Update Firmware | 18. F1 Hotbutton Setup |
| 8. Compare Firmware | 19. F2 Hotbutton Setup |
| 9. H/W Diagnostic | 20. Index |
| 10. Load Default | 21. Auto Run Time |
| 11. CD+G | |

Please Note! These settings can strongly influence operation of the CopyBox. If you do not have full knowledge of these functions we do not recommend adjusting these settings.

12.1 UnderRun Protect

Using this function, the "Buffer underrun" protection of the DVD±RW drives can be switched on and off. The default setting is "On".

- Select the "underrun Protect" option in the "Advanced Setup" menu with the "Up" or "Down" button and press "Enter" button.
- Select "On" or "Off" with the "Up" or "Down" buttons and press "Enter" button.

12-01. Adv Setup
UnderRun Protect

UnderRun Protect
On

12.2 Overburn

Using this function makes it possible to burn more data onto a recordable disc than the standard maximum which is allowed. The default setting is "Off".

Please Note; Overburning of CD's or DVD's outside specifications can result in readability issues.

- Select the "Overburn" option from the "Advanced Setup" menu with the "Up" or "Down" button and press "Enter" button.
- Select "On" or "Off" with the "Up" or "Down" button and press "Enter" button.

12-02. Adv Setup
Over burn

Over burn
Off

12.3 Read Error Skip

This function makes it possible to ignore any read errors on the master disc during the burn process. This allows damaged discs to be copied largely. The default setting is "Off".

- Select the "Read Error Skip" option from the "Advanced Setup" menu with the "Up" or "Down" button and press "Enter" button.
- Select "On" or "Off" with the "Up" or "Down" button and press "Enter" button.

12-03. Adv Setup
Read Error Ski p

Read Error Ski p
Off

12.4 Format HDD

This feature allows the optional internal hard drive to be reformatted.

Please Note! All existing data on the hard drive will be erased when formatting.

- Select the "Format HDD" option using the "Up" or "Down" button and press "Enter" button.
- The CopyBox uses F_S as default formatting.
- Press "Enter" button. The CopyBox will ask if the hard drive needs to be formatted. Select "Yes" or "No" with the "Up" or "Down" button and press "Enter" button.
- After formatting the hard drive can be checked using the Verify function. Select "Yes" or "No" with the "Up" or "Down" button and press "Enter" button.

```
12-04. Image P: A
Format HDD
```

```
HD Parti ti on
FormatSel ect? F_S
```

```
All data wi ll be
lost, format ? Yes
```

```
Format HDD OK !
veri fy HDD? No
```

12.5 Verify HDD

With this function, the optional hard drive can be checked for errors. Both the whole hard drive as individual partitions can be checked.

- Select the "Verify HDD" option from the "Advanced Setup" menu with the "Up" or "Down" button and press "Enter" button.
- Select "Disc" or "Partition" with the "Up" or "Down" button and press "Enter" button.
- If the "Partition" option is selected, the desired partition can be selected with the "Up" or "Down" button. Confirm your selection with the "Enter" button.
- After the hard drive or partition is checked, the following message appears on the LCD display:

```
12-05. Adv Setup
Veri fy HDD
```

```
Veri fy Di sk or
Parti ti on? Di sk
```

```
Sel ect Parti ti on
Temp !
```

```
Veri fy Hard Di sc
OK !
```

12.6 Burn-in

Using the "Burn-in" function three "burn-in" procedures can be automatically performed several times; "Erase and Copy", "Test" or "Compare". When using the "Erase and Copy" test rewritable disc first will be erased and then duplicated. For the "Erase and Copy" procedure rewritable CD or DVD discs are required. The "Test" procedure simulates the entire copying process without actually writing to recordable discs. For the "Test" procedure CD-R or DVD-R disc's are required. DVD+R discs do not support the test function. The "Compare" procedure checks whether the master disc and the copied discs are identical.

- Select the "Burn-in" option from the "Advanced Setup" menu with the "Up" or "Down" button and press "Enter" button.
- Select "Erase and Copy", "Test" or "Compare" as required test with the "Up" or "Down" button and press "Enter" button.

```
12-06. Adv Setup
Burn-i n
```

```
Burn-i n
Erase&Copy
```

- Select the desired time the drive trays must remain open between each cycle. This is a time can be selected between 10 and 180 seconds.
- Select the required number of simulations with the "Up" or "Down" button. The options are 1 to 1000, or "Run Continuous".

Sel Trayout Time
30 sec

Sel burn-in num:
Run Continuous

12.7 Update Firmware

This function should only be carried out in consultation with your supplier.

12.8 Compare Firmware

This function should only be carried out in consultation with your supplier.

12.9 H/W Diagnostic

This function allows testing of the CopyBox hardware.

- Select the "H / W Diagnostic" option from the "Advanced Setup" menu with the "Up" or "Down" button and press "Enter" button.
- The hardware test will start. Follow the instructions on the LCD display. All tests are shown on the LCD display.
- When the entire test is completed successfully the following message appears on the LCD display.

12-09. Adv Setup
H/W Di agnosti c

↑↓ Enter ESC
Hol d ESC to exi t

Test fi ni shed

12.10 Load Default

This function allows all CopyBox controller settings to be overwritten with the factory defaults.

- Select the "Load Default" option from the "Advanced Setup" menu with the "Up" or "Down" button and press "Enter" button.
- Select "Yes" or "No" with the "Up" or "Down" button and press "Enter" button.
- When the factory settings are loaded, the following message appears on the LCD display.

12-10. Adv Setup
Load Defaul t

Load Defaul t
Confi g ? Yes

Load Defaul t
OK

12.11 CD+G

This feature is not supported by the CopyBox DVD±RW burners.

12.12 ISRC & MCN

This feature can enable support for the ISRC format. ISRC is a special Audio-CD disc encryption (International Standard Recording Code).

- Select the "ISRC & MCN" option from the "Advanced Setup" menu with the "Up" or "Down" button and press "Enter" button.
- Select "On" or "Off" with the "Up" or "Down" button and press "Enter" button. "Off" is the default setting.

12- 12. Adv Setup
I SRC & MCN

I SRC
Off

12.13 USB Option*

The USB Option function is used to activate the USB connection of the CopyBox "PC-Connected" models. The default setting is "Off". See also the "Installing PC-Connected CopyBox 3, 5, 7, 9" section in this manual for more information about the USB function of the PC-Connected CopyBox duplicators.

- Select the "USB Option" option from the "Advanced Setup" menu with the "Up" or "Down" button and press "Enter" button.
- Select "On" with the "Up" or "Down" button to activate the USB connection. Ttach with the "Enter" button.

12- 13. Adv Setup
USB Opti on

USB Opti on
On

* Not available on the CopyBox 1

Please Note! Once the USB option has been activated, an additional menu item (12. USB Mode) will be available in the main menu of the CopyBox. In this case, the Advanced Setup menu will become menu item 13.

12.14 CD-TEXT

This feature can enable support for the CD-TEXT format.

- Select the "CD-TEXT" option from the "Advanced Setup" menu with the "Up" or "Down" button and press "Enter" button.
- Select "On" or "Off" with the "Up" or "Down" button and press "Enter" button. "Off" is the default setting.

12- 14. Adv Setup
CD- TEXT

CD- TEXT
Off

12.15 Password

This feature is not supported by the CopyBox duplicator.

12.16 Disc Counter*

The CopyBox duplicator built-in disc counter tracks how many disc's are duplicated on the system.

- Select the "Disc Counter" option from the "Advanced Setup" menu with the "Up" or "Down" button and press "Enter" button.
- Disc Counter function consists of three parts; "View", "Del Job Counter" and "Del Dev Counter". Select "View" with the "Up" or "Down" button and press "Enter" button.

12- 16. Adv Setup
Di sc Counter

Di sc Counter
Vi ew

- The "JC" number shows the total number of copied discs. Using the "Up" or "Down" button the number of successful and unsuccessful copies per drive can also be viewed.
- Using the "Del Job Counter" function the counter of total number of copied discs can be reset. Select "Yes" or "No" with the "Up" or "Down" button and press "Enter" button.
- Using the "Del Dev Counter" function the counters of the individual burners can be reset. Select the required burner with the "Up" or "Down" button. Use the "Enter" button to clear the counter.

* Not available on the CopyBox 1

```
JC OK: 000000007
Fail : 000000000
```

```
Disc Counter
Del Job Counter
```

```
Del 02 Counter
Ent: Del Esc: Exit
```

12.17 Auto Save Image*

Using the "Auto Save Image" function master discs can automatically be copied to a partition on the optional hard drive. This feature works in conjunction with the "Auto Start Drive" function (see 11.4). The default setting is "Off".

- Select the "Auto Save Image" option in the "Advanced Setup" menu with the "Up" or "Down" button and press "Enter" button.
- Select "On" with the "Up" or "Down" button to turn on the Auto Save Image function and press "Enter" button.

* Not available on the CopyBox 1

```
12-17. Adv Setup
Auto Save Image
```

```
Auto Save Image
On
```

12.18 F1 Hotbutton Setup*

Two of the five function buttons on the controller CopyBox (F1 and F2) can be assigned, if desired, to a different function from the main menu. The F1 function button uses the "Burn Speed" function as default.

- Select the "F1 Hotbutton Setup" option from the "Advanced Setup" menu with the "Up" or "Down" button and press "Enter" button.
- Select the desired function with the "Up" or "Down" button and press "Enter" button.

* Not available on the CopyBox 1

```
12-18. Adv Setup
F1 Hotkey Setup
```

```
F1 Hotkey Setup
0. Burn Speed
```

12.19 F2 Hotbutton Setup*

Two of the five function buttons on the controller CopyBox (F1 and F2) can be assigned, if desired, to a different function from the main menu. The F2 function button uses the "Select Source" function as default.

- Select the "F2 Hotbutton Setup" option from the "Advanced Setup" menu with the "Up" or "Down" button and press "Enter" button.
- Select the desired function with the "Up" or "Down" button and press "Enter" button.

* Not available on the CopyBox 1

```
12-19. Adv Setup
F2 Hotkey Setup
```

```
F1 Hotkey Setup
8. Select Source
```

12.20 Index

This feature is not supported by the CopyBox duplicator.

12.21 Auto Run Time

This feature is not supported by the CopyBox duplicator.

Installing PC-Connected CopyBox 3, 5, 7, 9

The "PC-connected" versions of the CopyBox duplicators can be connected to a PC through a USB 2.0 connection. Through this USB connection CD/DVD "ISO" images can be loaded onto the internal hard drive. Please follow the procedure below to properly install a PC-connected CopyBox.

Software Installation

With the PC-connected CopyBox an installation CD is supplied with the necessary software;

CopySmart Image Manager

Using the Image Manager software, CD/DVD ISO image files can be loaded from a PC to the internal hard drive of the CopyBox duplicator.

To install the software place the installation CD into the DVD drive of your PC. Start the "Setup.exe" file on the installation CD manually.

Hardware Installation

Included with the PC-Connected CopyBox are a power cord and an USB cable. Connect the CopyBox with the power cable to a power supply. Then connect the CopyBox to an available USB 2.0 port of a PC with the supplied USB cable. The flat USB connector is to be connected to the PC, the square end has to be connected to the rear of the CopyBox.

The installation of the PC-connected CopyBox is now complete. Take the following steps to properly set the CopyBox.

Switching USB Connection On/Off

Turn the CopyBox on by pressing the On/Off button on the front.

- Once the CopyBox has started appears the "Copy" function in the LCD display.
- The USB Option must first be activated in the "Advanced Setup" menu (12). To select this menu, press the "Esc" button for 3 seconds. The CopyBox beeps when menu 12 is selected.
- Select option 12-13 ("USB Option") with the "Up" or "Down" button and confirm with the "Enter" button. Select "On" with the "Up" or "Down" and confirm the choice with the "Enter" button. The "Advanced Setup" menu will now change into menu 13. Use the "Esc" button to Advanced To leave Setup menu and return to the main menu.
- The USB option in the PC Connected CopyBox is now enabled. In the main menu now an additional option (Menu 12 "USB Mode") is available. With this function, the USB connection can be switched on and off. Select menu option 12 (USB Mode) with the "Up" or "Down" button and confirm with the "Enter" button.
- To activate the USB connection select "Yes" with the "Up" or "Down" button and confirm with the "Enter" button. The CopyBox will now be restarted automatically in PC-connected mode.

1. Copy

12-01. Adv Setup
Underrun Protect

12-13. Adv Setup
USB Opti on

USB Opti on
On

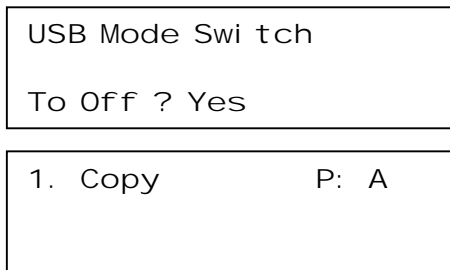
12. USB Mode

USB Mode Swi tch
To On ? Yes

Using the Image Manager software on the PC, CD/DVD ISO images can now be loaded from and to the built-in hard drive of the CopyBox. The hard drive can now only be accessed via the PC USB connection.

To start duplicating images files from the internal hard drive after loading CD/DVD image files from a PC, the USB connection first needs to be disabled:

- Select menu 12 (USB Mode) from the main menu using the "Up" or "Down" button and confirm with the "Enter" button. Select to disable the USB connection "Yes" with the "Up" or "Down" button.
- The CopyBox will now automatically restart and boot into the "Copy" menu. The USB connection is now disabled.

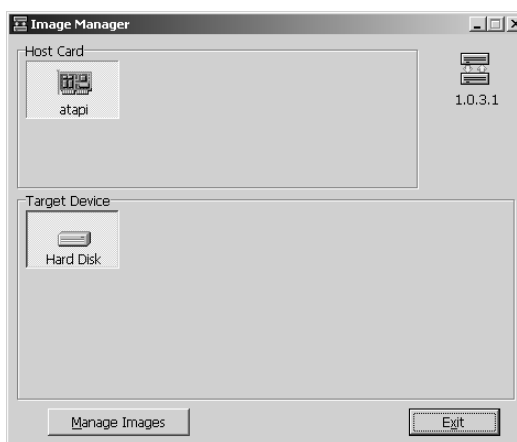


The PC-Connected CopyBox is now ready for duplication. To be able to duplicate from the internal hard drive, the hard drive needs to be selected as the "source" drive. Refer to Menu 8 ("Select Source") in this manual. To select specific CD or DVD images on the hard drive of the CopyBox menu option 9 ("Image") needs to be used. For more information about the "Image" menu refer to section 9 of this manual.

CopySmart Image Manager

Using the CopySmart Image Manager software, CD and DVD image files can be managed on the hard drive of the CopyBox. The USB connection on the CopyBox must be activated before the Image Manager software is started.

Once the Image Manager software is launched, the "Host Card" and the "Target Device" are visible. If these are not visible the USB connection is not active. Select the "Manage Images" button at the bottom of the screen to view the hard drive partitions.



In the "Manage Images" screen the contents of the CopyBox hard drive can be viewed and images can be managed. The hard drive partitions are 1GB in size and are listed alphabetically. When DVD or dual-layer DVD images are loaded multiple 1 GB partitions will be used for one image file.

Loading Image

A CD or DVD (ISO) image can be copied from the PC to the CopyBox hard drive with the "Load From .ISO file" option. Besides ISO images also CPM or DVM images can be loaded.

Exporting Image

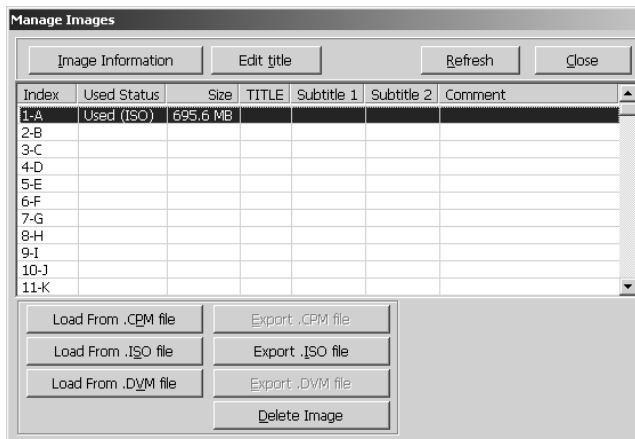
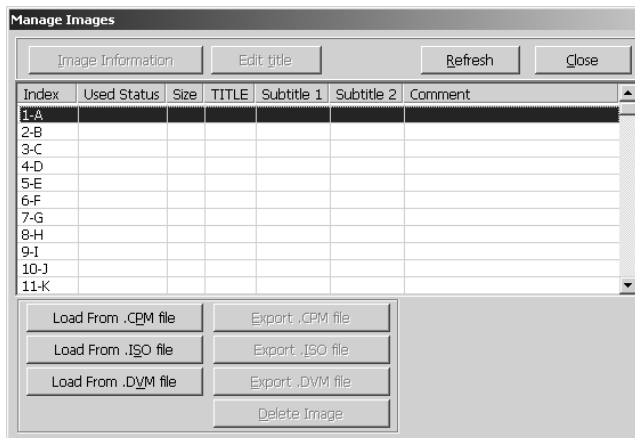
ISO, CPM and DVM images can also be copied from the CopyBox hard drive to your PC. Use the "Export" options.

Removing Image

Hard drive images can be deleted using the "Delete Image" option.

Renaming Image

The title of each image file on the hard drive can be changed using the "Edit title" option.



Installation CopyBox 1 with USB Connection

The CopyBox 1 can optionally be supplied with a USB connection. The use of this USB connection, however, differs from the CopyBox 3, 5, 7, and 9 "PC-Connected" models. Through the CopyBox 1 USB connection, both DVD reader and the DVD writer can be used as an external drive on the PC. If an external hard drive is connected through the CopyBox eSATA (external SATA) port, the external hard drive can also be accessed on the PC. This enables CD/DVD ISO image files to be copied from PC to the external hard drive.

Software Installation (only when an external hard drive is connected to the CopyBox eSATA port)

With the PC-connected CopyBox an installation CD is supplied with the necessary software;

CopySmart Image Manager

Using the Image Manager software, CD/DVD ISO image files can be loaded from a PC to the external hard drive connected to the eSATA port of the CopyBox 1 duplicator.

To install the software place the installation CD into the DVD drive of your PC. Start the "Setup.exe" file on the installation CD manually.

Hardware Installation

Included with the PC-Connected CopyBox 1 are a power cord and an USB cable. Connect the CopyBox 1 with the power cord to a power supply. Then connect the CopyBox 1 to an available USB 2.0 port of a PC with the supplied USB cable. The flat USB connector is to be connected to the PC, the square end has to be connected to the rear of the CopyBox 1.

The installation of the PC-connected CopyBox 1 is now complete. Take the following steps to properly set the CopyBox 1.

Enable USB Connection

Turn on the CopyBox 1 by pressing the On/Off button on the front.

- Once the CopyBox has started the "Copy" function appears in the LCD display.
- If the USB function is not activated on the CopyBox 1 (Menu 12 "USB Mode" is not visible), this function can be activated using the "Advanced Setup" menu (12). To select this menu, the "Esc" button needs to be pressed for 3 seconds. The CopyBox beeps when menu 12 is selected.
- Select option 12-14 ("USB Option") with the "Up" or "Down" button and confirm with the "Enter" button.
- Select "Menu On" with the "Up" or "Down" button and confirm with the "Enter" button. Menu 12 will now change in menu 13. Use the "Esc" button to exit the Advanced Setup menu and return to the main menu.
- The USB option in the CopyBox 1 is now activated. In the main menu an additional option (Menu 12 "USB Mode") is now available. This feature allows the USB connection to a PC to be switched on and off. Select menu option 12 (USB Mode) with the "Up" or "Down" button and confirm with the "Enter" button.
- The CopyBox will now ask if the USB mode needs to be activated. Select "Yes" with the "Up" or "Down" button and confirm with the "Enter" button.

1. Copy

12-01. Adv Setup
Underrun Protect

12- 14. Adv Setup
USB Opti on

USB Opti on
Menu On

12. USB Mode

Swi tch USB Mode?
Yes

USB L. H Mode
D1: DUAL D2: HDD

The CopyBox 1 offers the ability to access two drives ("D1" and "D2") through a PC. This can be either the DVD reader, the DVD writer or an(external) hard drive. Using the menu, drives can be assigned to D1 and D2.

- Select "D1 Drive Select" with the "Up" or "Down" button and confirm with the "Enter" button. Now the "DUAL" (DVD writer) drive can be selected. Confirm the choice with the "Enter" button.
- Select "Drive Select D2" with the "Up" or "Down" button and confirm with the "Enter" button. Now the "DVD" (DVD reader) drive or "HDD" (Hard Drive) can be selected. Confirm the choice with the "Enter" button.
- To disable the USB mode, and to return to the stand-alone mode, select "Copy Mode" with the "Up" or "Down" button. The CopyBox will ask if it needs to be switched back to SA mode. Select "Yes" with the "Up" or "Down" button and confirm with the "Enter" button.
- The CopyBox will now automatically restart and boot into the "Copy" menu. To enable the USB connection again use menu 12 (USB Mode).

Now Change USB1

Drive?Yes

Now Change USB2

Drive?Yes

Back to SA-Mode?

Yes

1. Copy

Using the "Copysmart Image Manager" software for managing ISO disc images Through a PC is discussed on page 27 of this user manual.

Technical information

Writing speed	DVD±R	DVD±R DL	DVD±RW	CD-R	CD-RW
	24x max	12x max	10x max	48x max	32x max
Dimensions	1-1	(lxbxh) 28 x 18 x 19 cm			
	1-3	(lxbxh) 41 x 18 x 29 cm			
	1-5	(lxbxh) 41 x 18 x 38 cm			
	1-7	(lxbxh) 41 x 18 x 47 cm			
	1-9	(lxbxh) 41 x 18 x 56 cm			
	1-11	(lxbxh) 41 x 18 x 60 cm			
Weight	1-1	4,7 kg (including DVD drives)			
	1-3	8,0 kg (including DVD drives)			
	1-5	10,3 kg (including DVD drives)			
	1-7	13,0 kg (including DVD drives)			
	1-9	15,7 kg (including DVD drives)			
	1-11	17,4 kg (including DVD drives)			
Power Supply	100-120 VAC or 220-240 VAC, 50/60Hz, 80W - 500W				
Supported Media	DVD±Recordable (4,7 GB general use) 1x - 24x speed DVD±Recordable (8,5 GB dual-layer) 2,4x - 12x speed DVD±Rewritable (4,7 GB) 1x - 10x speed CD±Recordable (74, 80 min.)				
Supported formats	DVD reader (Single & Dual Layer), DVD±R, DVD±RW, CD-R, CD-RW, CD-ROM (Mode 1), CD-ROM/XA (Mode 2, form 1 & 2), CD-DA (Audio-CD), Video CD (VCD, SVCD, XSVCD), Photo-CD (Single & Multi-session), CD-Extra, CD-text, ISO 9660				
Write methods	Auto detect (TAO, DAO)				
Temperature & humidity	- in use : 5°C to 45°C (RH: 15% to 80% non condensing) - not in use : -20°C to 60°C (RH: 15% to 90% non condensing)				

Safety Precautions

Maintenance and repair should be left to service personnel recognized by the seller.

- Do not place the CopyBox in an environment prone to extreme temperatures or high humidity.
- Do not place the CopyBox in a dusty environment.
- Do Not place the CopyBox in a location where strong magnetic fields are generated.
- Do not place the CopyBox on an unstable surface.
- Do not block the vent on the back.
- Do not place heavy objects on the CopyBox.
- Do not place any liquids that can spill on the CopyBox.
- Avoid violent shocks during transport.

Technical Issues

In case of malfunctions or technical problems with your CopyBox duplicator please contact your supplier.